

Product datasheet for PS100072

pLenti-EF1a-C-tGFP Lentiviral Gene Expression Vector

Product data:

Product Type: Lentiviral Gene Expression Vectors

C-Tag: tGFP

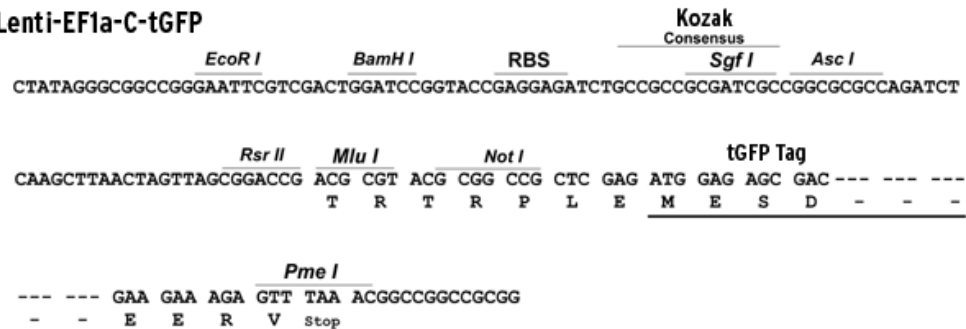
E. coli Selection: Chloramphenicol (34 ug/mL)

Features: This Lenti vector is a third generation of lentiviral vector.

- All OriGene's TrueORF clone can be shuttled into this vector via PrecisionShuttling, a simple cut-and-ligation process.
- The ORF cloned in this vector can be expressed as a tagged protein with a C-terminal tGFP tag.
- The expression of the cloned ORF is driven by EF1a, a constitutive promoter as an alternative of CMV promoter. The latter could be silenced in certain cellular environment.
- A brief [lentiviral packaging protocol](#) is provided.
E. Coli selection: Chloramphenicol(34ug/ml)
- EF51 Primer (GE100088) can be used to sequence the target sequence after cloning.
- AC_GFP_R Primer (GE100113) can be used to sequence the target sequence after cloning.

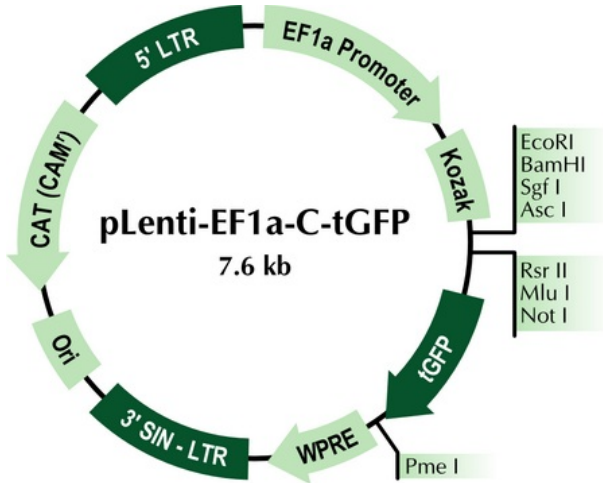
Schematic of the multiple cloning sites:

pLenti-EF1a-C-tGFP



[View online »](#)

Product images:



pLenti-EF1a-C-tGFP

	<u>EcoRI</u>	<u>BamHI</u>	<u>RBS</u>	<u>Kozak Consensus</u>	<u>SgfI</u>	<u>AscI</u>	
	CTATAGGGCGGCCGGGAATTCGTCGACTGGATCCGGTACCGAGGAGATCTGCCGCCGCGATCGCCGGCGCGCCAGATCT						
		<u>RsrII</u>	<u>MluI</u>	<u>NotI</u>	<u>tGFP Tag</u>		
	CAAGCTTAAGTACTAGTTAGCGGACCG	ACG CGT	ACG CGG CCG	CTC GAG	ATG GAG AGC GAC --- --- ---		
		T R T R	P L E	M E S D	- - -		
		<u>PmeI</u>					
	---	GAA GAA AGA GTT TAA	ACGGCCGGCCGCGG				
	- - -	E E R V	Stop				