

Product datasheet for PS100071

pLenti-C-mGFP Lentiviral Gene Expression Vector

Product data:

Product Type: Lentiviral Gene Expression Vectors

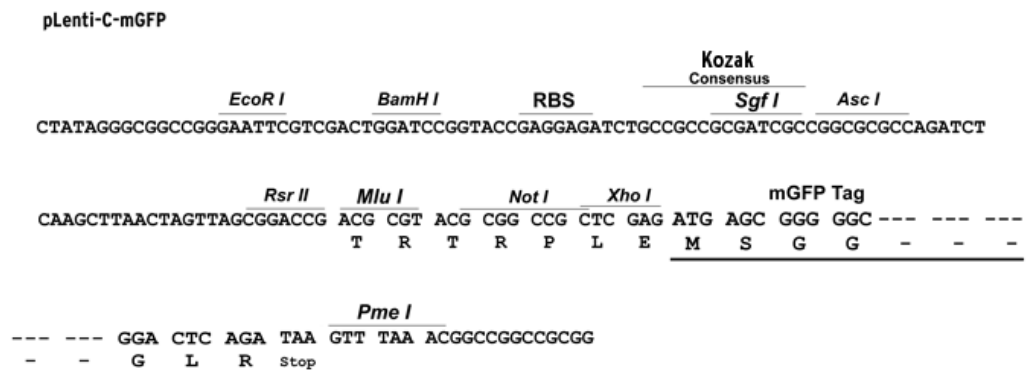
C-Tag: mGFP

E. coli Selection: Chloramphenicol

Features: This Lenti vector is a third generation of lentiviral vector.

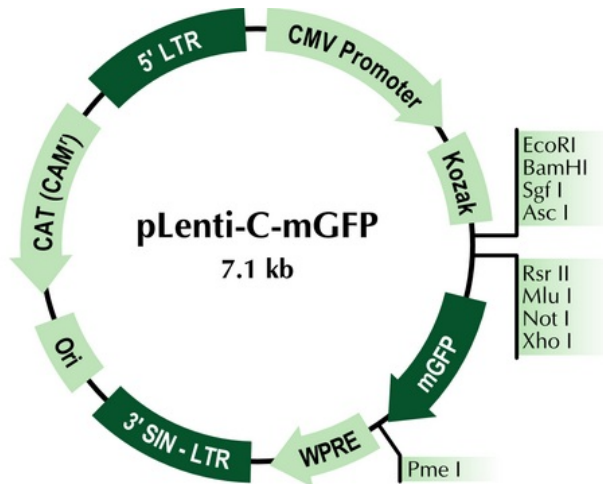
- All OriGene's TrueORF clone can be shuttled into this vector via PrecisionShuttling, a simple cut-and-ligation process.
- The ORF cloned in this vector can be expressed as a tagged protein with a c-terminal monomeric GFP tag.
- mGFP (scientific name mTagGFP) is the improved variant of tagGFP, the mutant of the Aequorea macrodactyla GFP-like protein. mGFP possesses bright green fluorescence with excitation/emission maxima at 483 and 506 nm, respectively. Compared to EGFP, mGFP provides about the same brightness of fluorescence but is significantly more pH stable. mGFP is specially optimized for expression at 37°C. Because of monomeric nature, mGFP is mainly intended for protein localization studies and expression in long-term cell cultures. In FRET applications, mGFP can be used as a donor for red fluorescent protein mRFP or as an acceptor for blue fluorescent protein mBFP.
- A brief lentiviral packaging protocol is provided.
- V2_F Primer (GE100111) can be used to sequence the target sequence after cloning.
- mGFP_R Primer (GE100125) can be used to sequence the target sequence after cloning.

Schematic of the multiple cloning sites:



[View online »](#)

Product images:



pLenti-C-mGFP

	<u>EcoRI</u>	<u>BamHI</u>	<u>RBS</u>	<u>Kozak Consensus</u>	<u>SgfI</u>	<u>AscI</u>	
	CTATAGGGCGCCGGGAATTCGTCGACTGGATCCGGTACCGAGGAGATCTGCCGCCGCGATCGCCGGCGGCCAGATCT						
		<u>RsrII</u>	<u>MluI</u>	<u>NotI</u>	<u>XhoI</u>	<u>mGFP Tag</u>	
	CAAGCTTAAGTACTAGTTAGCGGACCG	ACG CGT	ACG CGG	CCG CTC GAG	ATG AGC GGG GGC	---	---
		T R	T R	P L E	M S G G	- - -	- - -
			<u>PmeI</u>				
---	---	GGA CTC AGA TAA	GTT TAA ACGGCCGCGCCGGG				
- - -	- - -	G L R	Stop				