

Product datasheet for **PP1231P2**

WNT1 Rabbit Polyclonal Antibody

Product data:

Product Type:	Primary Antibodies
Applications:	ELISA, IHC, WB
Recommended Dilution:	Indirect ELISA: To detect hWNT-1 by indirect ELISA (using 100 µl/well antibody solution) a concentration of 0.5-2.0 µg/ml of this antibody is required. This antigen affinity purified antibody, in conjunction with compatible secondary reagents, allows the detection of at least 0.2-0.4 ng/well of recombinant hWNT-1. Sandwich ELISA: To detect hWNT-1 by sandwich ELISA (using 100 µl/well antibody solution) a concentration of 0.5-2.0 µg/ml of this antibody is required. This antigen affinity purified antibody, in conjunction with Biotinylated Anti-Human WNT-1 (PP1231B) as a detection antibody, allows the detection of at least 0.2-0.4 ng/well of recombinant hWNT-1. Western Blot: To detect hWNT-1 by Western Blot analysis this antibody can be used at a concentration of 0.1-0.2 µg/ml. Used in conjunction with compatible secondary reagents the detection limit for recombinant hWNT-1 is 1.5-3.0 ng/lane, under either reducing or non-reducing conditions. Immunohistochemistry: This antibody stained formalin-fixed, paraffin-embedded sections of human breast invasive ductal carcinoma. The recommended concentration is 62.5 ng/ml with an overnight incubation at 4°C. An HRP-labeled polymer detection system was used with a DAB chromogen. Heat induced antigen retrieval with a pH 6.0 sodium citrate buffer is recommended. Optimal concentrations and conditions may vary.
Reactivity:	Human
Host:	Rabbit
Clonality:	Polyclonal
Immunogen:	Highly pure (>98%) recombinant human WNT-1
Specificity:	The antibody recognizes Human WNT-1. Other species not tested.
Formulation:	PBS, pH 7.2 without preservatives. State: Aff - Purified State: Lyophilized (sterile filtered) purified antibody
Reconstitution Method:	Centrifuge vial prior to opening. Restore in sterile water to a concentration of 0.1-1.0 mg/ml.
Purification:	Affinity chromatography employing immobilized hWNT-1 matrix
Conjugation:	Unconjugated



[View online »](#)

Storage: Store lyophilized at 2-8°C for 6 months or at -20°C long term.
After reconstitution store the antibody undiluted at 2-8°C for one month or (in aliquots) at -20°C long term.
Avoid repeated freezing and thawing.

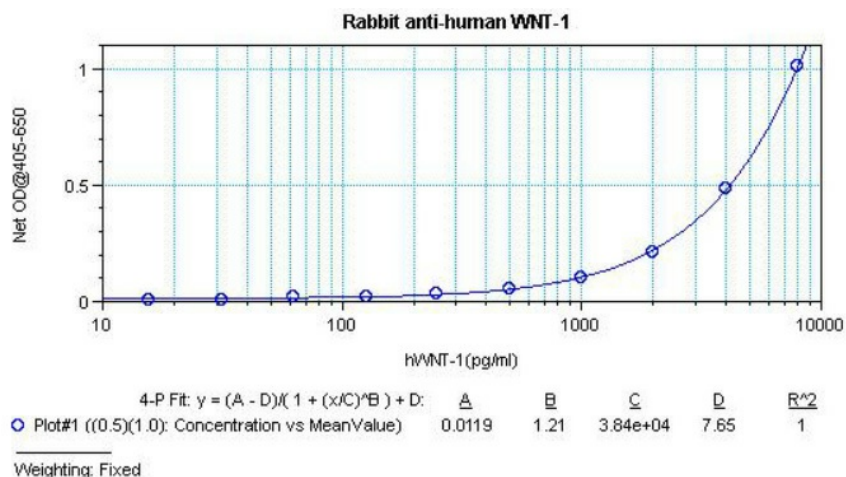
Stability: Shelf life: one year from despatch.

Gene Name: Wnt family member 1

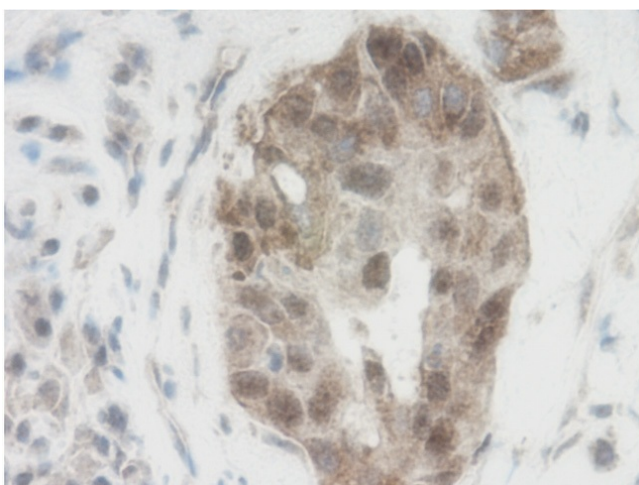
Database Link: [Entrez Gene 7471 Human P04628](#)

Synonyms: Proto-oncogene protein Wnt-1, INT1, INT-1

Product images:



Sandwich ELISA using WNT1 Antibody Cat.-No [PP1231P]



Formalin-Fixed, Paraffin-Embedded Sections of human breast invasive ductal carcinoma stained with WNT1 Antibody Cat.-No [PP1231P]