

## Product datasheet for **PP1228B2**

### TL1A (TNFSF15) Rabbit Polyclonal Antibody

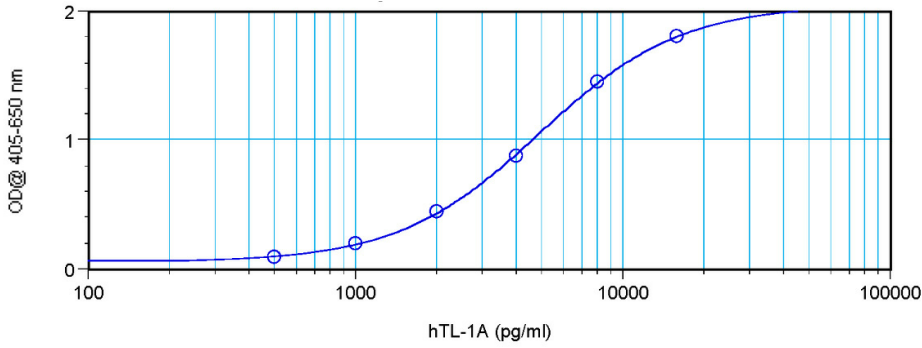
#### Product data:

Product Type:	Primary Antibodies
Applications:	ELISA, WB
Recommended Dilution:	<b>Direct ELISA:</b> To detect hTL-1A by direct ELISA (using 100 µl/well antibody solution) this antibody can be used at ~1.0 µg/ml. This biotinylated polyclonal antibody allows the detection of at least 0.2–0.4 ng/well of recombinant hTL-1A. <b>Sandwich ELISA:</b> To detect hTL-1A by Sandwich ELISA (using 100 µl/well antibody solution) a concentration of 0.25 – 1.0 µg/ml of this antibody is required. This biotinylated polyclonal antibody, in conjunction with purified Anti-Human TL-1A (Cat.-No PP1228P) as a capture antibody, allows the detection of at least 0.2–0.4 ng/well of recombinant hTL-1A. <b>Western blot:</b> To detect hTL-1A by Western Blot analysis this antibody can be used at a concentration of 0.1–0.2 µg/ml. Used in conjunction with compatible secondary reagents the detection limit for recombinant hTL-1A is 1.5–3.0 ng/lane, under either reducing or non-reducing conditions.
Reactivity:	Human
Host:	Rabbit
Clonality:	Polyclonal
Immunogen:	Highly pure (>98%) E.coli derived recombinant hTL-1A (human TL-1A).
Specificity:	Recognizes Human TL-1A. Other species not tested.
Formulation:	PBS, pH 7.2 with containing no preservative or stabilizer. Label: Biotin State: Lyophilized (Sterile filtered) purified Ig fraction
Reconstitution Method:	Centrifuge vial prior to opening. Restore with sterile PBS containing 0.1% BSA to a concentration of 0.1–1.0 mg/ml.
Purification:	Affinity Chromatography
Conjugation:	Biotin
Storage:	Store lyophilized at 2–8°C for 6 months or at –20°C long term. After reconstitution store the antibody undiluted at 2–8°C for one month or (in aliquots) at –20°C long term. Avoid repeated freezing and thawing.

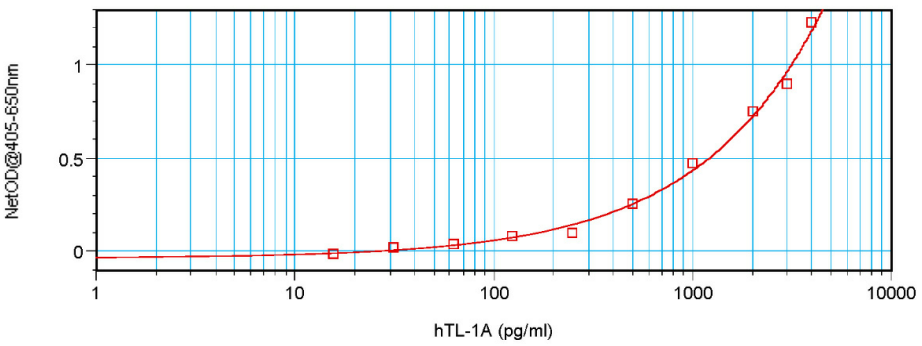


[View online »](#)

**Stability:** Shelf life: one year from despatch.  
**Gene Name:** tumor necrosis factor superfamily member 15  
**Database Link:** [Entrez Gene 9966 Human O95150](#)  
**Synonyms:** TL1, TL1A, VEGI

**Product images:**


Direct ELISA using TNFSF15 Antibody Cat.-No [PP1228B1]



Sandwich ELISA using TNFSF15 Antibody Cat.-No [PP1228B1]