

## Product datasheet for **PP1219P1**

### **BMP2 Rabbit Polyclonal Antibody**

#### **Product data:**

Product Type:	Primary Antibodies
Applications:	ELISA, FN, IHC, WB
Recommended Dilution:	<b>Neutralization:</b> To yield one-half maximal inhibition [ND50] of the biological activity of Human BMP-2 (200 ng/ml), a concentration of 1.3-1.9 µg/ml of this antibody is required. <b>Sandwich ELISA:</b> To detect Human BMP-2 by Sandwich ELISA (using 100 µl/well antibody solution) a concentration of 0.5-2.0 µg/ml of this antibody is required. This antibody in conjunction with Biotin conjugated anti-Human BMP2 (Cat.-No PP1219B1 or PP1219B2) as a Detection antibody, allows the detection of at least 0.2-0.4 ng/well of recombinant Human BMP-2. <b>Western Blot:</b> To detect Human BMP-2 by Western Blot analysis this antibody can be used at a concentration of 0.1-0.2 µg/ml. Used in conjunction with compatible secondary reagents the detection limit for recombinant Human BMP-2 is 1.5-3.0 ng/lane, under either reducing or non-reducing conditions. <b>Immunohistochemistry on Paraffin Sections:</b> 0.25 µg/ml with an overnight incubation at 4°C. An HRP-labeled polymer detection system was used with a DAB chromogen. Heat induced antigen retrieval with a pH 6.0 sodium citrate buffer is recommended.
Reactivity:	Human, Mouse
Host:	Rabbit
Clonality:	Polyclonal
Immunogen:	Highly pure (>98%) E.coli derived recombinant Human BMP-2 (Cat.No PA212)
Specificity:	The antibody recognizes Human and Mouse BMP2. Other species not tested.
Formulation:	PBS, pH 7.2 without preservatives State: Aff - Purified State: Lyophilized (sterile filtered) purified Ig fraction
Reconstitution Method:	Centrifuge the vial prior to opening. Restore in sterile water to a concentration of 0.1-1.0 mg/ml.
Purification:	Affinity Chromatography employing immobilized Human BMP-2 matrix
Conjugation:	Unconjugated



[View online »](#)

**Storage:** Store lyophilized at 2-8°C for 6 months or at -20°C long term. After reconstitution store the antibody undiluted at 2-8°C for one month or (in aliquots) at -20°C long term. Avoid repeated freezing and thawing.

**Stability:** Shelf life: one year from despatch.

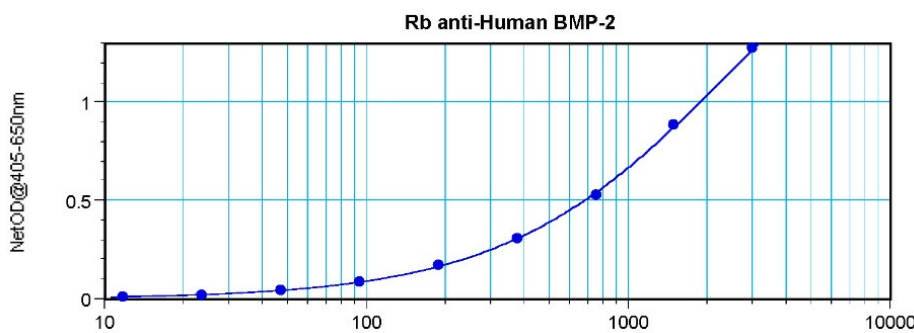
**Gene Name:** bone morphogenetic protein 2

**Database Link:** [Entrez Gene 650 Human P12643](#)

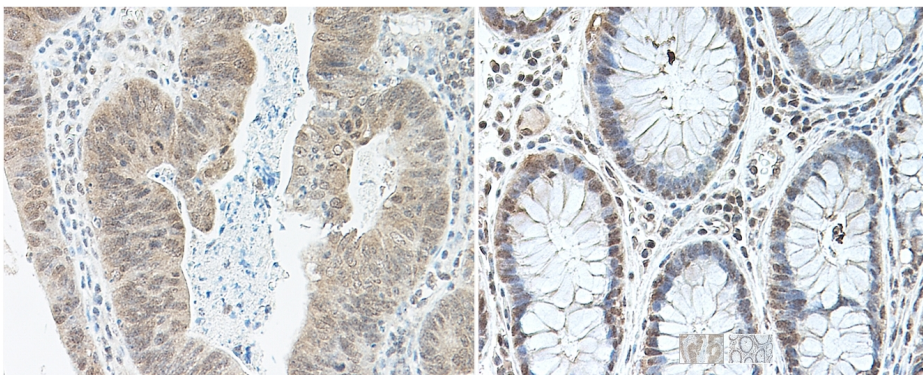
**Background:** BMP2 belongs to the transforming growth factor beta (TGFB) superfamily of secreted growth factors. It is a disulfide linked homodimer and induces bone and cartilage formation. In addition to its osteogenic activity, BMP2 plays an important role in cardiac morphogenesis and is expressed in a variety of tissues including lung, spleen, brain, liver, prostate ovary and small intestine. The functional form of BMP2 is a 26 kDa protein composed of two identical 114 amino acid polypeptide chains linked by a single disulfide bond. BMPs control fundamental events in early embryonic development, organogenesis and adult tissue homeostasis.

**Synonyms:** Bone morphogenetic protein 2, BMP-2, BMP-2A

**Product images:**



Sandwich ELISA using BMP2 Antibody Cat.-No [PP1219P]



[PP1219P] BMP2 Antibody Staining of formalin-fixed, paraffin-embedded sections of Human colon/rectum adenocarcinoma