

## Product datasheet for **PP1219B1**

### **BMP2 Rabbit Polyclonal Antibody**

#### **Product data:**

<b>Product Type:</b>	Primary Antibodies
<b>Applications:</b>	ELISA, WB
<b>Recommended Dilution:</b>	<b>Direct ELISA:</b> To detect Human BMP-2 by Direct ELISA (using 100 µl/well antibody solution) a concentration of ~1.0 µg/ml of this antibody is required. This antibody in conjunction with compatible secondary reagents, allows the detection of at least 0.2 ng/well of recombinant Human BMP-2. <b>Sandwich ELISA:</b> To detect Human BMP-2 by Sandwich ELISA (using 100 µl/well antibody solution) a concentration of 0.25-1.0 µg/ml of this antibody is required. This antibody in conjunction with Affinity purified anti-Human BMP2 ( <i>Cat.-No</i> PP1219P1 or PP1219P2) as a Capture antibody, allows the detection of at least 0.2-0.4 ng/well of recombinant Human BMP-2. <b>Western Blot:</b> To detect Human BMP-2 by Western Blot analysis this antibody can be used at a concentration of 0.1-0.2 µg/ml. Used in conjunction with compatible secondary reagents the detection limit for recombinant Human BMP-2 is 1.5-3.0 ng/lane, under either reducing or non-reducing conditions.
<b>Reactivity:</b>	Human
<b>Host:</b>	Rabbit
<b>Clonality:</b>	Polyclonal
<b>Immunogen:</b>	Highly pure (>98%) E.coli derived recombinant Human BMP-2.
<b>Specificity:</b>	The antibody recognizes Human BMP2. Other species not tested.
<b>Formulation:</b>	PBS, pH 7.2 without preservatives Label: Biotin State: Lyophilized (sterile filtered) purified Ig fraction Label: conjugated
<b>Reconstitution Method:</b>	Restore in sterile PBS containing 0.1% BSA to a concentration of 0.1-1.0 mg/ml.
<b>Purification:</b>	Affinity Chromatography
<b>Conjugation:</b>	Biotin



[View online »](#)

**Storage:** Prior to reconstitution store at 2-8°C.  
Following reconstitution store undiluted at 2-8°C for one month or (in aliquots) at -20°C for longer.  
Avoid repeated freezing and thawing.

**Stability:** Shelf life: one year from despatch.

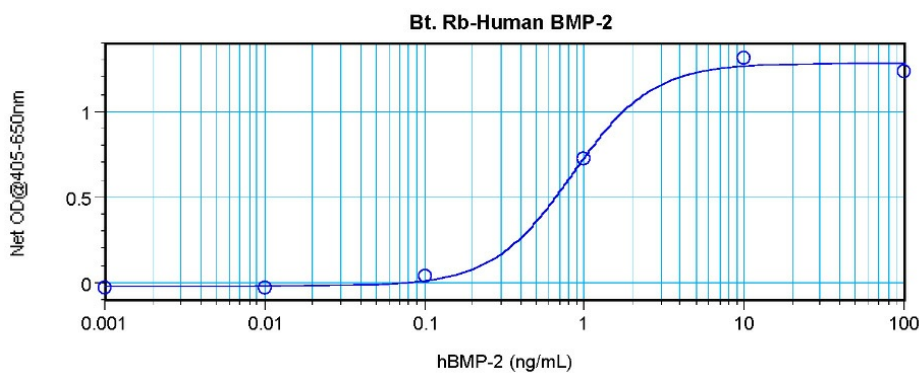
**Gene Name:** bone morphogenetic protein 2

**Database Link:** [Entrez Gene 650 Human P12643](#)

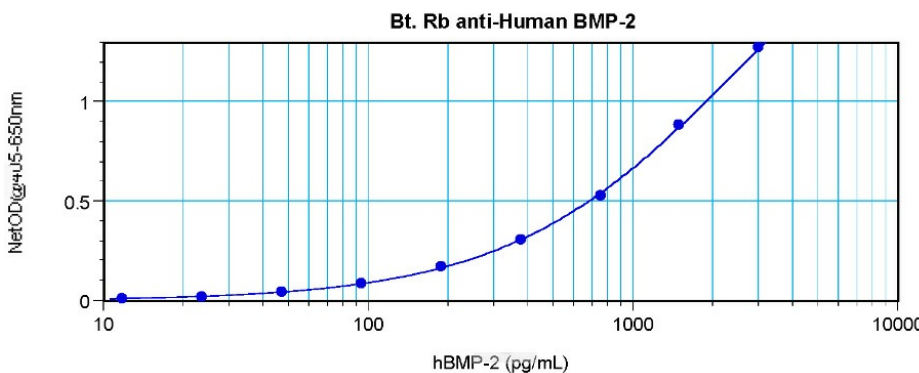
**Background:** BMP2 belongs to the transforming growth factor beta (TGFB) superfamily of secreted growth factors. It is a disulfide linked homodimer and induces bone and cartilage formation. In addition to its osteogenic activity, BMP2 plays an important role in cardiac morphogenesis and is expressed in a variety of tissues including lung, spleen, brain, liver, prostate ovary and small intestine. The functional form of BMP2 is a 26 kDa protein composed of two identical 114 amino acid polypeptide chains linked by a single disulfide bond. BMPs control fundamental events in early embryonic development, organogenesis and adult tissue homeostasis.

**Synonyms:** Bone morphogenetic protein 2, BMP-2, BMP-2A

**Product images:**



Direct ELISA using BMP2 Antibody Cat.-No [PP1219B]



Sandwich ELISA using BMP2 Antibody Cat.-No [PP1219B]