

Product datasheet for **PP1217P2**

Cxcl12 (alpha) Goat Polyclonal Antibody

Product data:

Product Type:	Primary Antibodies
Applications:	ELISA, Neutralize, WB
Recommended Dilution:	Neutralization: To yield one-half maximal inhibition [ND50] of the biological activity of Murine SDF-1 alpha (100 ng/ml), a concentration of 2.5-3.5 µg/ml of this antibody is required. Sandwich ELISA: To detect Mouse SDF-1 alpha by Sandwich ELISA (using 100 µl/well antibody solution) a concentration of 0.5-2.0 µg/ml of this antibody is required. This antigen affinity purified antibody, in conjunction with Biotin conjugated anti-Mouse SDF-1 alpha (<i>Cat.-No</i> PP1217B1 or PP1217B2) as a detection antibody, allows the detection of of 0.2-0.4 ng/well of recombinant Mouse SDF-1 alpha. Western Blot: To detect Mouse SDF-1 alpha by Western Blot analysis this antibody can be used at a concentration of 0.1-0.2 µg/ml. Used in conjunction with compatible secondary reagents the detection limit for recombinant Mouse SDF-1 alpha is 1.5-3.0 ng/lane, under either reducing or non-reducing conditions.
Reactivity:	Mouse
Host:	Goat
Clonality:	Polyclonal
Immunogen:	Highly pure (>98%) <i>E.coli</i> derived recombinant Mouse SDF-1 alpha (<i>Cat.-No</i> PA152)
Specificity:	Reacts with Mouse Stromal Cell Derived Factor-1 alpha (SDF-1 alpha). Other species not tested.
Formulation:	PBS, pH 7.2 without preservatives State: Aff - Purified State: Lyophilized (sterile filtered) purified Ig fraction
Reconstitution Method:	Restore in sterile water to a concentration of > 0.2 mg/ml.
Purification:	Affinity Chromatography employing immobilized Murine SDF-1α matrix
Conjugation:	Unconjugated
Storage:	Store lyophilized at 2-8°C for 6 months or at -20°C long term. After reconstitution store the antibody undiluted at 2-8°C for one month or (in aliquots) at -20°C long term. Avoid repeated freezing and thawing.



[View online »](#)

Stability: Shelf life: one year from despatch.

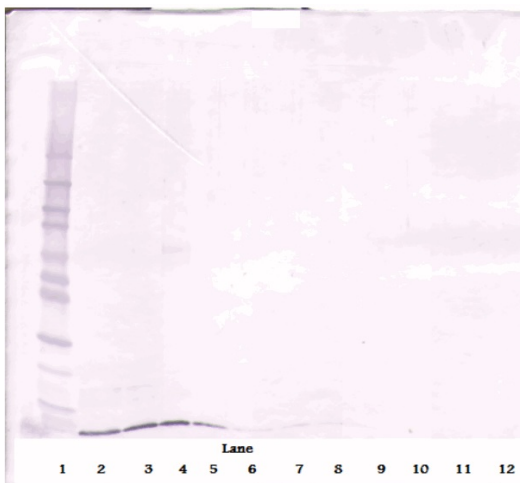
Gene Name: chemokine (C-X-C motif) ligand 12

Database Link: [Entrez Gene 20315 Mouse P40224](#)

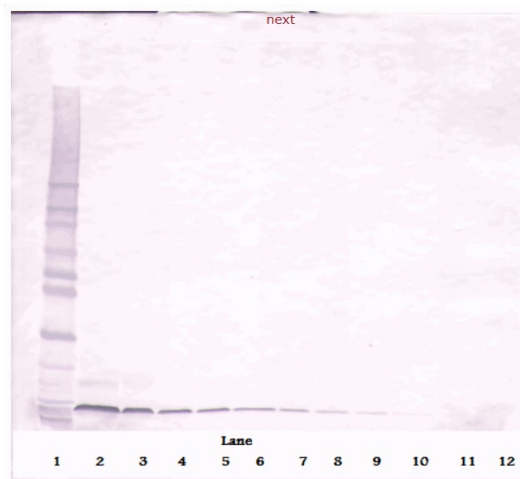
Background: SDF1 alpha and 1 beta are small cytokines that belong to the intercrine family, members of which activate leukocytes and are often induced by proinflammatory stimuli such as lipopolysaccharide, TNF or IL1. SDF1 alpha has been shown to be chemotactic for lymphocytes and is recently reported to be a ligand for CXCR4 (LESTR/fusin), a co-receptor for HIV1 entry into T cells. SDF-1 binding to CXCR4 inhibits HIV1 entry.

Synonyms: Stromal cell-derived factor 1, SDF1A, SDF1B, IRH, HIRH, PBSF

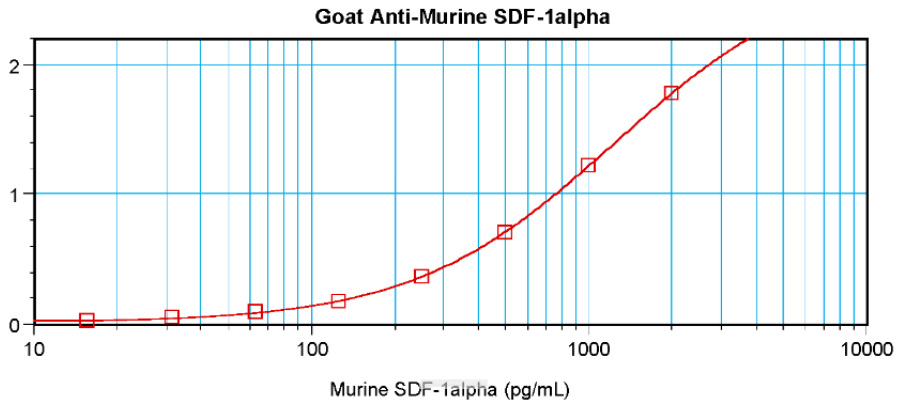
Product images:



Western Blot (Reduced) using CXCL12 / SDF1 Antibody Cat.-No [PP1217P]



Western Blot (Unreduced) using CXCL12 / SDF1 Antibody Cat.-No [PP1217P]



Sandwich ELISA using CXCL12 / SDF1 Antibody
Cat.-No [PP1217P]