

## Product datasheet for **PP1101P2**

### GM CSF (CSF2) Rabbit Polyclonal Antibody

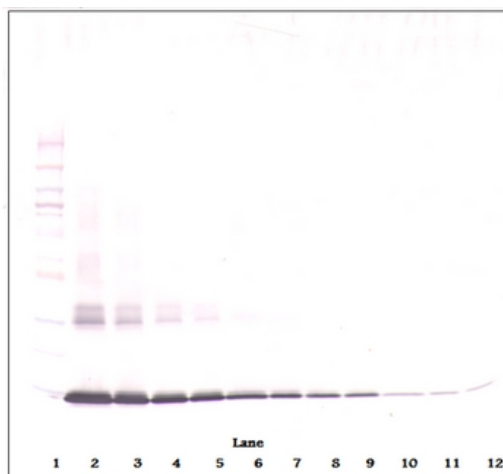
#### Product data:

Product Type:	Primary Antibodies
Applications:	ELISA, FN, IHC, WB
Recommended Dilution:	<b>Sandwich ELISA:</b> To detect Human GM-CSF by Sandwich ELISA (using 100 µl/well antibody solution) a concentration of 0.5-2.0 µg/ml of this antibody is required. This antigen affinity purified antibody, in conjunction with Biotinylated Anti-Human GM-CSF ( <i>Cat.-No</i> PP1101B1 / PP1101B2) as a detection antibody, allows the detection of at least 0.2-0.4 ng/well of recombinant hGM-CSF. <b>Western Blot:</b> To detect Human GM CSF by Western Blot analysis this antibody can be used at a concentration of 0.1-0.2 µg/ml. Used in conjunction with compatible secondary reagents the detection limit for recombinant Human GM CSF is 1.5-3.0 ng/lane, under either reducing or non-reducing conditions. <b>Immunohistochemistry on Formalin-Fixed, Paraffin-Embedded Sections:</b> 0.25 µg/ml with an overnight incubation at 4°C. HRP-labeled polymer detection system was used with a DAB chromogen. Heat induced antigen retrieval with a pH 6.0 sodium citrate buffer is recommended. <b>Neutralization:</b> To yield one-half maximal inhibition [ND50] of the biological activity of hGM CSF (1.0 ng/ml), a concentration of 0.13-0.20 µg/ml of this antibody is required.
Reactivity:	Human
Host:	Rabbit
Clonality:	Polyclonal
Immunogen:	Highly pure (>98%) E.coli derived recombinant Human GM-CSF (Human Granulocyte Macrophage Colony Stimulating Factor)
Specificity:	This antibody recognizes Human Granulocyte Macrophage Colony Stimulating Factor (GM-CSF). Other species not tested.
Formulation:	PBS, pH 7.2 without preservatives State: Aff - Purified State: Lyophilized purified (sterile filtered) Ig fraction
Reconstitution Method:	Restore in sterile water to a concentration of 0.1-1.0 mg/ml.
Purification:	Affinity Chromatography employing immobilized hGM-CSF matrix
Conjugation:	Unconjugated

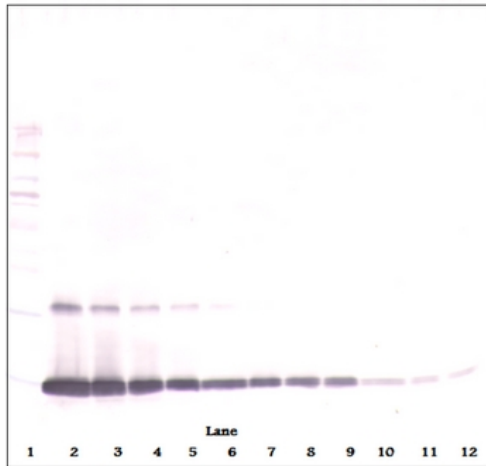


[View online »](#)

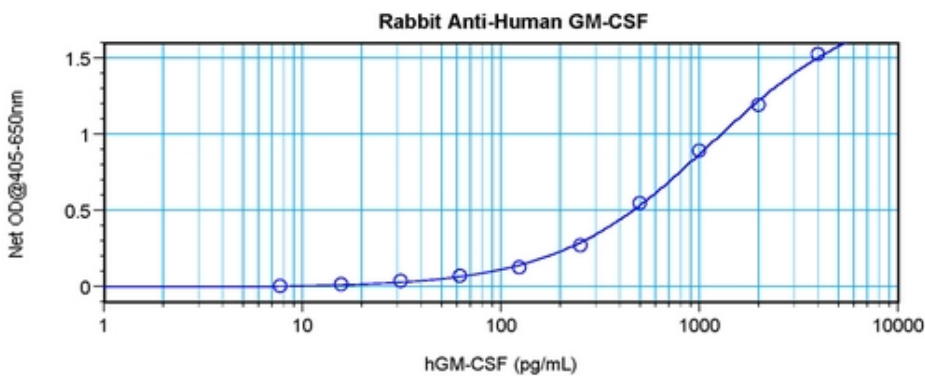
<b>Storage:</b>	Store lyophilized at 2-8°C for 6 months or at -20°C long term. After reconstitution store the antibody undiluted at 2-8°C for one month or (in aliquots) at -20°C long term. Avoid repeated freezing and thawing.
<b>Stability:</b>	Shelf life: one year from despatch.
<b>Gene Name:</b>	colony stimulating factor 2
<b>Database Link:</b>	<a href="#">Entrez Gene 1437 Human P04141</a>
<b>Background:</b>	The cytokine GM-CSF stimulates the growth and differentiation of hematopoietic precursor cells from various lineages, including granulocytes, macrophages, eosinophils and erythrocytes. Used in myeloid reconstitution following bone marrow transplant, bone marrow transplant engraftment failure or delay, mobilization and following transplantation of autologous peripheral blood progenitor cells, and following induction chemotherapy in older adults with acute myelogenous leukemia.
<b>Synonyms:</b>	CSF2, GMCSF, Sargramostim, Molgramostin
<b>Note:</b>	Centrifuge vial prior to opening!

**Product images:**

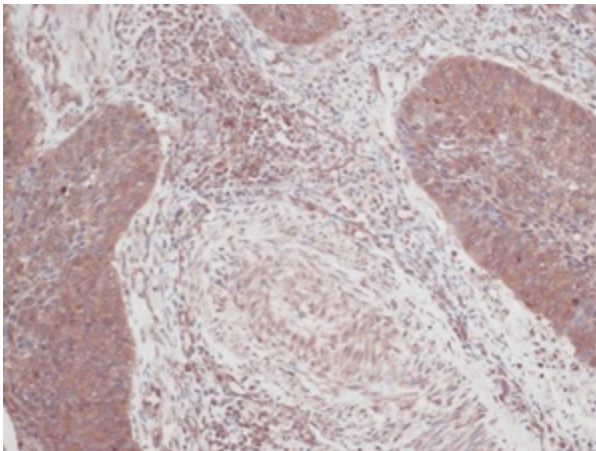
Western Blot (Unreduced) using GM-CSF Antibody  
Cat.-No [PP1101P]



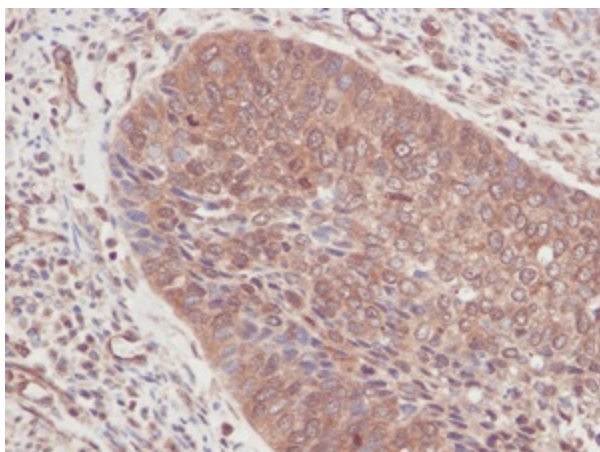
Western Blot (Reduced) using GM-CSF Antibody Cat.-No [PP1101P]



Sandwich ELISA using GM-CSF Antibody Cat.-No [PP1101P]



Formalin-Fixed, Paraffin-Embedded Sections of human cervical squamous cell carcinoma stained with GM-CSF Antibody Cat.-No [PP1101P]. Tissue samples were provided by the Cooperative Human Tissue Network, which is funded by the National Cancer Institute.



Formalin-Fixed, Paraffin-Embedded Sections of human cervical squamous cell carcinoma stained with GM-CSF Antibody Cat.-No [PP1101P]. Tissue samples were provided by the Cooperative Human Tissue Network, which is funded by the National Cancer Institute.