

## Product datasheet for **PP1091B2**

### CXCL11 Rabbit Polyclonal Antibody

#### Product data:

Product Type:	Primary Antibodies
Applications:	ELISA, WB
Recommended Dilution:	<b>Direct ELISA:</b> To detect Human I-TAC by Direct ELISA (using 100 µl/well antibody solution) a concentration of ~1.0 µg/ml of this antibody is required. This Biotin conjugated antibody allows the detection of at least 2000-4000 pg/ml of recombinant Human I-TAC. <b>Sandwich ELISA:</b> To detect Human I-TAC by Sandwich ELISA (using 100 µl/well antibody solution) a concentration of 0.25-1.0 µg/ml of this antibody is required. This Biotin conjugated antibody in conjunction with Purified anti-Human I-TAC ( <i>Cat.-No</i> PP1091P) as a Capture antibody, allows the detection at least 2000-4000 pg/ml of recombinant Human I-TAC. <b>Western Blot:</b> To detect Human I-TAC by Western Blot analysis this antibody can be used at a concentration of 0.1-0.2 µg/ml. Used in conjunction with compatible secondary reagents the detection limit for recombinant Human I-TAC is 1.5-3.0 ng/lane, under either reducing or non-reducing conditions.
Reactivity:	Human
Host:	Rabbit
Clonality:	Polyclonal
Immunogen:	Highly pure (>98%) E.coli-derived 8.3 kDa recombinant Human I-TAC.
Specificity:	Recognizes Human I-TAC. Other species not tested.
Formulation:	PBS, pH 7.2 without preservatives Label: Biotin State: Lyophilized purified Ig fraction
Reconstitution Method:	Restore in sterile PBS containing 0.1% BSA to a concentration of 0.1-1.0 mg/ml.
Purification:	Affinity Chromatography
Conjugation:	Biotin
Storage:	Store lyophilized at 2-8°C for 6 months or at -20°C long term. After reconstitution store the antibody undiluted at 2-8°C for one month or (in aliquots) at -20°C long term. Avoid repeated freezing and thawing.



[View online »](#)

**Stability:** Shelf life: one year from despatch.

**Gene Name:** C-X-C motif chemokine ligand 11

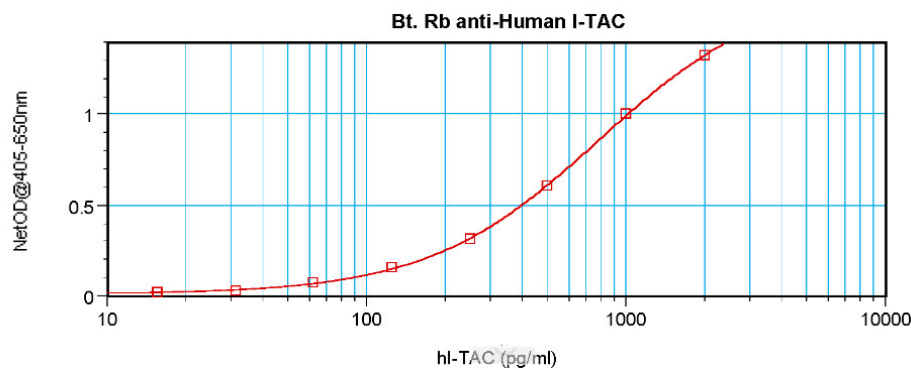
**Database Link:** [Entrez Gene 6373 Human O14625](#)

**Background:** This member of the the intercrine alpha (chemokine Cx) family is chemotactive for interleukin-activated T cells but not unstimulated T cells, neutrophils or monocytes. It induces calcium release in activated T cells and binds to CXCR3. It may play an important role in CNS diseases which involve T cell recruitment and in skin immune responses. It is expressed at high levels in peripheral blood leukocytes, pancreas and liver astrocytes and at moderate levels in thymus, spleen and lung. It is induced by interferon gamma and interferon beta.

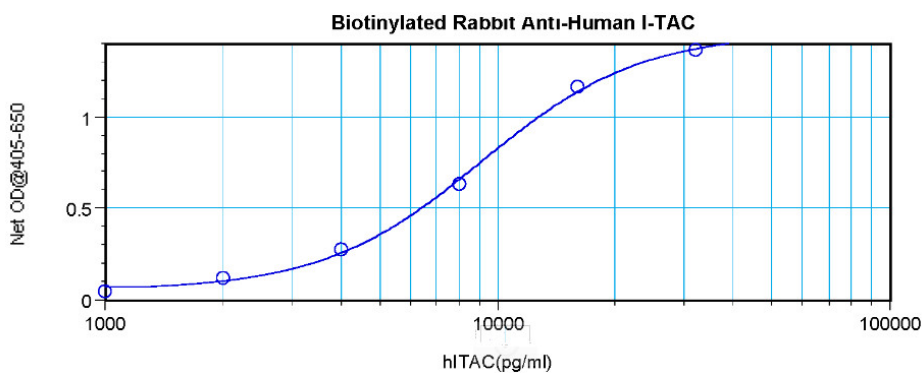
**Synonyms:** C-X-C motif chemokine 11, Small-inducible cytokine B11, H174, Beta-R1, IP-9, I-TAC, SCYB11, SCYB9B

**Note:** Centrifuge vial prior to opening!

**Product images:**



Sandwich ELISA using [PP1091B] antibody



Direct ELISA using [PP1091B] antibody