

## Product datasheet for **PP1083B2**

### Cxcl10 Rabbit Polyclonal Antibody

#### Product data:

Product Type:	Primary Antibodies
Applications:	ELISA, WB
Recommended Dilution:	<p><b>Direct ELISA:</b> To detect Mouse IP-10 by Direct ELISA (using 100 µl/well), a concentration of ~1.0 µg/ml of this antibody is required. This Biotin conjugated antibody allows the detection of at least 0.2-0.4 ng/well of recombinant Mouse IP-10.</p> <p><b>Sandwich ELISA:</b> To detect Mouse IP-10 by Sandwich ELISA (using 100 µl/well antibody solution), a concentration of 0.25-1.0 µg/ml of this antibody is required. This Biotin conjugated antibody, in conjunction with Purified anti Mouse IP10 antibody (cat. PP1083P) as a Capture antibody, allows the detection of at least 0.2-0.4 ng/well of recombinant Mouse IP-10.</p> <p><b>Western Blot:</b> To detect Mouse IP-10 by Western Blot analysis this antibody can be used at a concentration of 0.1-0.2 µg/ml. Used in conjunction with compatible secondary reagents the detection limit for recombinant Mouse IP-10 is 1.5-3.0 ng/lane, under either reducing or non-reducing conditions.</p>
Reactivity:	Mouse
Host:	Rabbit
Clonality:	Polyclonal
Immunogen:	Highly pure (>98%) E.coli derived recombinant Mouse IP-10.
Specificity:	Reacts with Interferon-gamma Inducible Protein-10.
Formulation:	<p>PBS, pH 7.2 without preservatives</p> <p>Label: Biotin</p> <p>State: Lyophilized (sterile filtered) purified Ig fraction</p>
Reconstitution Method:	Restore in sterile PBS containing 0.1% BSA to a concentration of 0.1-1.0 mg/ml.
Purification:	Affinity Chromatography
Conjugation:	Biotin
Storage:	<p>Store the antibody prior to reconstitution at -20°C. Following reconstitution the antibody can be stored at 2-8°C for one month or at -20°C for longer.</p> <p>Avoid repeated freezing and thawing.</p>
Stability:	Shelf life: One year from despatch.
Gene Name:	chemokine (C-X-C motif) ligand 10



[View online »](#)

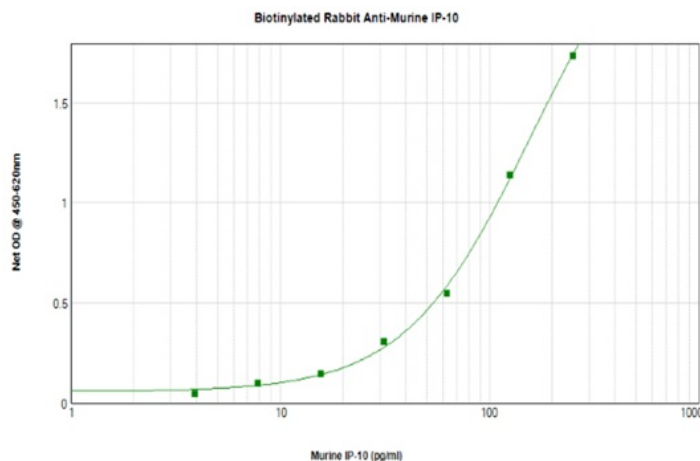
**Database Link:** [Entrez Gene 15945 Mouse P17515](#)

**Background:** Interferon-gamma-inducible 10 kD protein (IP-10), is a CXC chemokine with chemoattractant properties for CD4-positive T cells and inhibits early normal and leukemic hemopoietic progenitor proliferation. IP-10 is produced by a wide variety of cell types ranging from neutrophils and monocytes to hepatocytes, endothelial cells and keratinocytes. The cytokine is reported to be involved in a scala of inflammatory pathologies such as HIV encephalitis, cutaneous T cell lymphoma, chronic hepatitis and acute anterior uveitis. Various observations strongly suggest a role for the CXC chemokines IL-8 and IP-10 in the regulation of angiogenic activity in cancer and in idiopathic pulmonary fibrosis.

**Synonyms:** C-X-C motif chemokine 10, Small-inducible cytokine B10, Gamma-IP10, INP10, SCYB10

**Note:** Centrifuge vial prior to opening!

### Product images:



To detect mIP-10 by sandwich ELISA (using 100  $\mu$ l/well antibody solution) a concentration of 0.25 – 1.0  $\mu$ g/ml of this antibody is required. This biotinylated polyclonal antibody, in conjunction with the Polyclonal Anti-Murine IP-10 [PP1083P1]/[PP1083P2] as a capture antibody, allows the detection of at least 0.2 – 0.4 ng/well of recombinant mIP-10.