

Product datasheet for **PP1083B1**

Cxcl10 Rabbit Polyclonal Antibody

Product data:

| | |
|------------------------|---|
| Product Type: | Primary Antibodies |
| Applications: | E, ELISA, WB |
| Recommended Dilution: | Direct ELISA: To detect Mouse IP-10 by Direct ELISA (using 100 ml/well antibody solution) this antibody can be used at a concentration of ~ 1.0 µg/ml. This Biotinylated antibody allows the detection of at least 0.2-0.4 ng/well of recombinant Mouse IP-10. Sandwich ELISA: To detect Mouse IP-10 by Sandwich ELISA (using 100 ml/well antibody solution), a concentration of 0.25-1.0 µg/ml of this antibody is required. This Biotinylated antibody, in conjunction with anti Mouse IP10 antibody (cat. PP1083P) as a Capture antibody, allows the detection of at least 0.2-0.4 ng/well of recombinant Mouse IP-10. Western Blot: To detect Mouse IP-10 by Western Blot analysis this antibody can be used at a concentration of 0.1-0.2 µg/ml. Used in conjunction with compatible secondary reagents the detection limit for recombinant Mouse IP-10 is 1.5-3.0 ng/lane, under either reducing or non-reducing conditions. |
| Reactivity: | Mouse |
| Host: | Rabbit |
| Clonality: | Polyclonal |
| Immunogen: | Highly pure (>98%) E.coli derived recombinant Mouse IP-10. |
| Specificity: | Reacts with Interferon-gamma Inducible Protein-10. |
| Formulation: | PBS, pH 7.2 without preservatives Label: Biotin State: Lyophilized (sterile filtered) purified Ig fraction |
| Reconstitution Method: | Restore in sterile PBS containing 0.1% BSA to a concentration of 0.1-1.0 mg/ml. |
| Purification: | Affinity Chromatography |
| Conjugation: | Biotin |
| Storage: | Store the antibody prior to reconstitution at -20°C. Following reconstitution the antibody can be stored at 2-8°C for one month or at -20°C for longer. Avoid repeated freezing and thawing. |
| Stability: | Shelf life: One year from despatch. |
| Gene Name: | chemokine (C-X-C motif) ligand 10 |



[View online »](#)

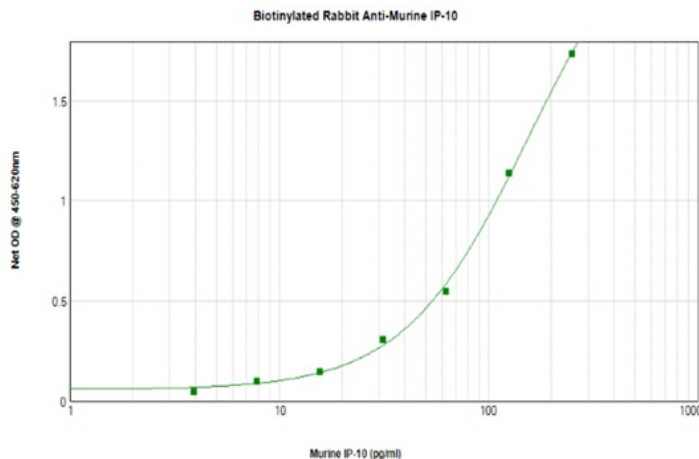
Database Link: [Entrez Gene 15945 Mouse P17515](#)

Background: Interferon-gamma-inducible 10 kD protein (IP-10), is a CXC chemokine with chemoattractant properties for CD4-positive T cells and inhibits early normal and leukemic hemopoietic progenitor proliferation. IP-10 is produced by a wide variety of cell types ranging from neutrophils and monocytes to hepatocytes, endothelial cells and keratinocytes. The cytokine is reported to be involved in a scala of inflammatory pathologies such as HIV encephalitis, cutaneous T cell lymphoma, chronic hepatitis and acute anterior uveitis. Various observations strongly suggest a role for the CXC chemokines IL-8 and IP-10 in the regulation of angiogenic activity in cancer and in idiopathic pulmonary fibrosis.

Synonyms: C-X-C motif chemokine 10, Small-inducible cytokine B10, Gamma-IP10, INP10, SCYB10

Note: Centrifuge vial prior to opening!

Product images:



To detect mIP-10 by sandwich ELISA (using 100 μ l/well antibody solution) a concentration of 0.25 – 1.0 μ g/ml of this antibody is required. This biotinylated polyclonal antibody, in conjunction with the Polyclonal Anti-Murine IP-10 [PP1083P1]/[PP1083P2] as a capture antibody, allows the detection of at least 0.2 – 0.4 ng/well of recombinant mIP-10.