

Product datasheet for **PP1080P1**

GRO alpha (CXCL1) Rabbit Polyclonal Antibody

Product data:

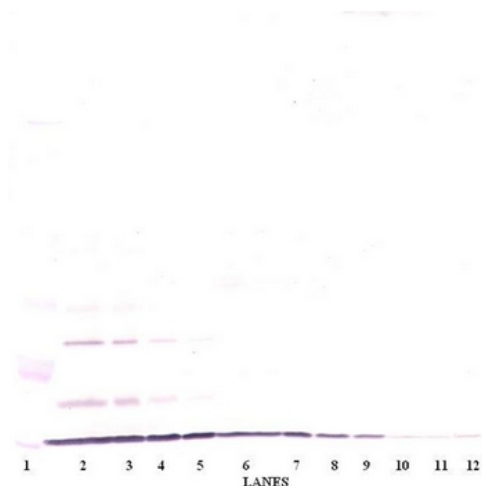
Product Type:	Primary Antibodies
Applications:	ELISA, FN, IHC, WB
Recommended Dilution:	Neutralisation: To yield one-half maximal inhibition [ND50] of the biological activity of Human GRO/MGSA (100 ng/ml), a concentration of 1.5-3.0 µg/ml of this antibody is required. Sandwich ELISA: To detect Human GRO/MGSA by Sandwich ELISA (using 100 µl/well antibody solution) a concentration of 0.5-2.0 µg/ml of this antibody is required. This antigen affinity purified antibody, in conjunction with Biotinylated anti Human GRO/MGSA (Cat.-No PP1080B1 or PP1080B2) as a detection antibody, allows the detection of at least 0.2-0.4 ng/well of recombinant Human GRO/MGSA. Western blot: To detect Human GRO/MGSA by Western Blot analysis this antibody can be used at a concentration of 0.1-0.2 µg/ml. Used in conjunction with compatible secondary reagents the detection limit for recombinant Human GRO/MGSA is 1.5-3.0 ng/lane, under either reducing or non-reducing conditions. Immunohistochemistry on Frozen and Paraffin Embedded Sections: 0.125-0.150 µg/ml with an overnight incubation at 4°C. This antibody stained formalin-fixed, paraffin-embedded sections of Human colon/rectum adenocarcinoma. An HRP-labeled polymer detection system was used with a DAB chromogen. Heat induced antigen retrieval with a pH 6.0 sodium citrate buffer is recommended.
Reactivity:	Human
Host:	Rabbit
Clonality:	Polyclonal
Immunogen:	Highly pure (>98%) E.coli derived recombinant Human GRO/MGSA (Cat.-No PA062).
Specificity:	This antibody is specific for Human Growth Related Oncoprotein alpha. Other species not tested.
Formulation:	PBS, pH 7.2 without preservatives State: Aff - Purified State: Lyophilized purified Ig fraction
Reconstitution Method:	Restore in sterile water to a concentration of 0.1-1.0 mg/ml.
Purification:	Affinity Chromatography immobilized Human GRO/MGSA matrix
Conjugation:	Unconjugated



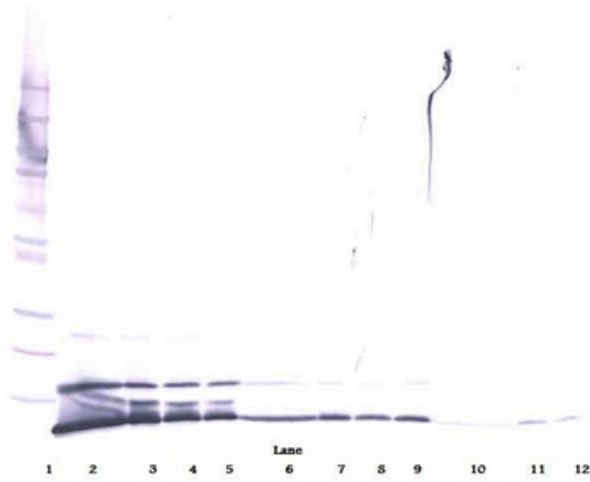
[View online »](#)

Storage:	Store lyophilized at 2-8°C for 6 months or at -20°C long term. After reconstitution store the antibody undiluted at 2-8°C for one month or (in aliquots) at -20°C long term. Avoid repeated freezing and thawing.
Stability:	Shelf life: one year from despatch.
Gene Name:	C-X-C motif chemokine ligand 1
Database Link:	Entrez Gene 2919 Human P09341
Background:	Three Human MGSA/GRO genes encode 3 highly related chemokines, MGSA/GRO alpha, -beta and -gamma. All 3 MGSA/GRO proteins bind to the same receptors, but with differing affinities, and stimulate a number of biological responses including chemotaxis, angiogenesis, and growth regulation. Melanoma growth stimulatory activity/gro alpha (MGSA), a member of the alpha-chemokine family, is produced by a variety of dermal and epidermal cells and can act in a paracrine and autocrine fashion.
Synonyms:	GRO, GRO1, GROA, MGSA, SCYB1, CXCL1, MGSA, NAP-3, GRO-alpha(1-73)
Note:	Centrifuge vial prior to opening!

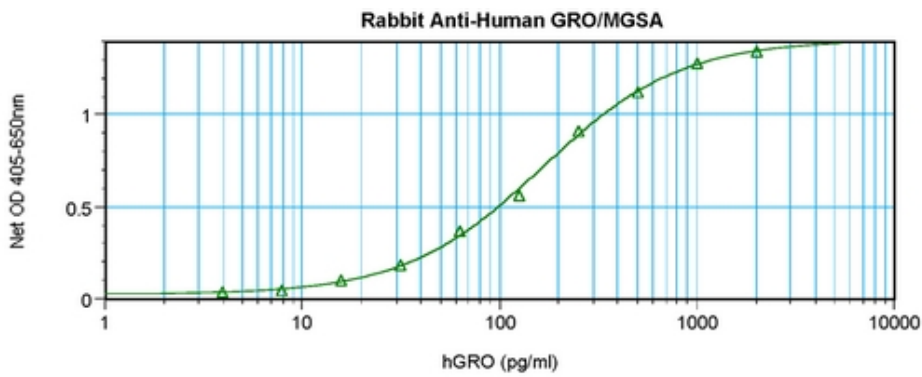
Product images:



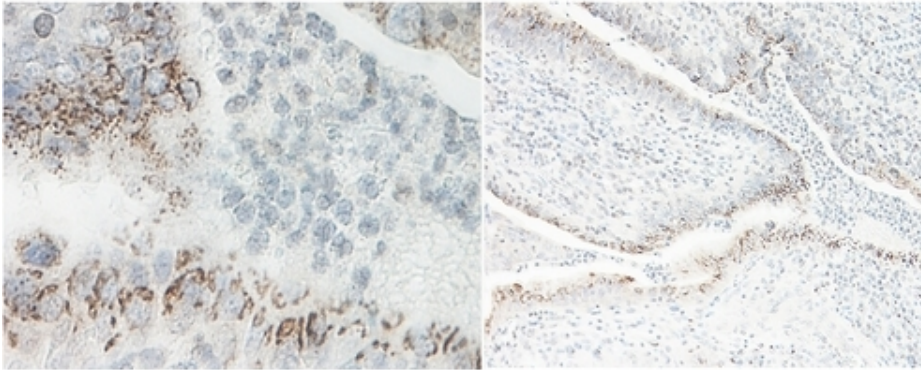
Western Blot (Unreduced) using CXCL1 / GRO-alpha Antibody Cat.-No [PP1080P]



Western Blot (Reduced) using CXCL1 / GRO-alpha Antibody Cat.-No [PP1080P]



Sandwich ELISA using CXCL1 / GRO-alpha Antibody Cat.-No [PP1080P]



Formalin-fixed, paraffin-embedded sections of human colon/rectum adenocarcinoma stained with CXCL1 / GRO-alpha Antibody Cat.-No [PP1080P]