

Product datasheet for **PP1073P2**

VEGFA Rabbit Polyclonal Antibody

Product data:

Product Type: Primary Antibodies

Applications: ELISA, FN, IHC, WB

Recommended Dilution: **Neutralization:** To yield one-half maximal inhibition [ND50] of the biological activity of hVEGF (10 ng/ml), a concentration of 0.05-0.1 µg/ml of this antibody is required.
Indirect ELISA: To detect hVEGF by indirect ELISA (using 100 µl/well antibody solution) a concentration of 0.5-2.0 µg/ml of this antibody is required. This antigen affinity purified antibody, in conjunction with compatible secondary reagents, allows the detection of at least 0.2-0.4 ng/well of recombinant hVEGF.
Sandwich ELISA: To detect hVEGF by sandwich ELISA (using 100 µl/well antibody solution) a concentration of 0.5-2.0 µg/ml of this antibody is required. This antigen affinity purified antibody, in conjunction Biotinylated Anti-Human VEGF as a detection antibody, allows the detection of at least 0.2-0.4 ng/well of recombinant hVEGF.
Western Blot: To detect hVEGF by Western Blot analysis this antibody can be used at a concentration of 0.1-0.2 µg/ml. Used in conjunction with compatible secondary reagents the detection limit for recombinant hVEGF is 1.5-3.0 ng/lane, under either reducing or non-reducing conditions.
Immunohistochemistry on Paraffin Sections: This antibody stained formalin-fixed, paraffin-embedded sections of Human breast invasive ductal carcinoma. The recommended concentrations are 2.5-5.5 µg/ml with an overnight incubation at 4°C. An HRP-labeled polymer detection system was used with a DAB chromogen. Heat induced antigen retrieval with a pH 6.0 Sodium Citrate buffer is recommended.

Reactivity: Human

Host: Rabbit

Clonality: Polyclonal

Immunogen: Highly pure (>98%) *E.coli* derived recombinant Human VEGF165 (*Cat.-No* PA136)

Specificity: This antibody detects Vascular endothelial growth factor A.

Formulation: Lyophilized from PBS, pH 7.2
State: Aff - Purified
State: Lyophilized sterile filtered Ig fraction
Preservative: None



[View online »](#)

Reconstitution Method: Centrifuge vial prior to opening. Reconstitute in sterile water to a concentration of 0.1-1.0 mg/ml.

Purification: Affinity Chromatography employing immobilized hVEGF matrix

Conjugation: Unconjugated

Storage: Prior to reconstitution store at 2-8°C.
Following reconstitution store undiluted at 2-8°C for one month or (in aliquots) at -20°C for longer.
Avoid repeated freezing and thawing.

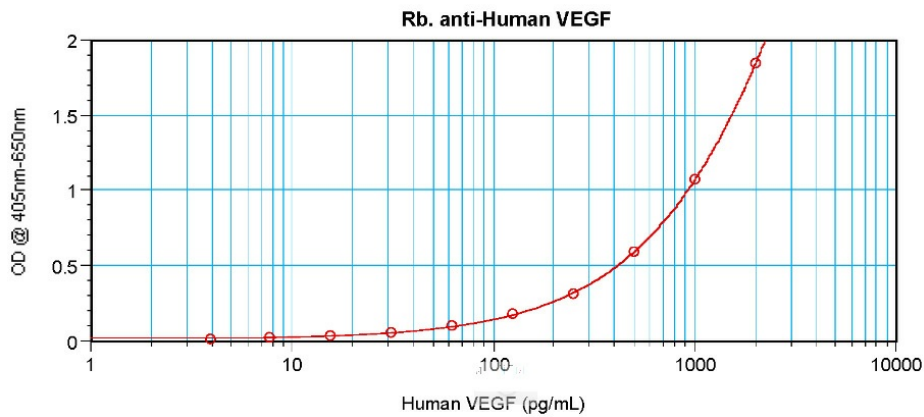
Stability: Shelf life: one year from despatch.

Gene Name: vascular endothelial growth factor A

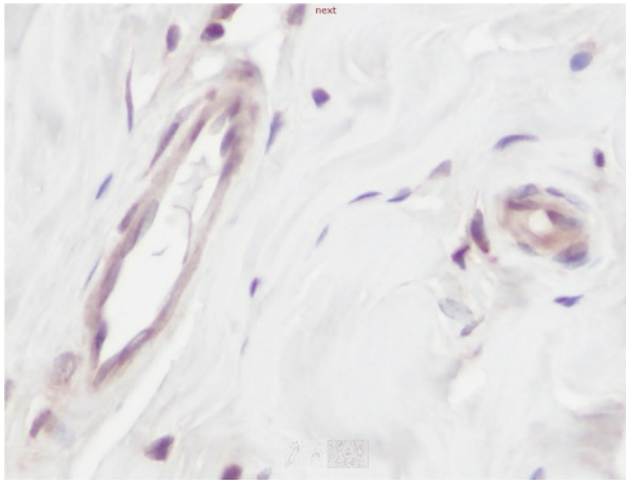
Database Link: [Entrez Gene 7422 Human P15692](#)

Synonyms: VEGFA, VEGF, VPF, Vascular endothelial growth factor A, Vascular permeability factor

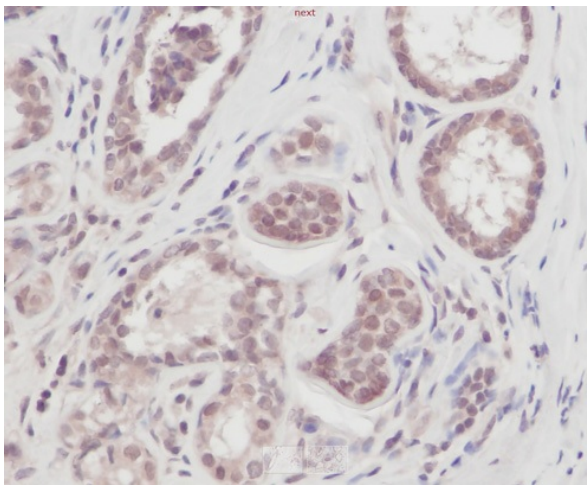
Product images:



Sandwich ELISA using VEGF antibody Cat.-No [PP1073P]



This antibody stained formalin-fixed, paraffin-embedded sections of Human breast invasive ductal carcinoma. The recommended concentrations are 2.5 - 5.5 ug/ml with an overnight incubation at 4°C. An HRP-labeled polymer detection system was used with a DAB chromogen. Heat induced antigen retrieval with a pH 6.0 Sodium Citrate buffer is recommended.



This antibody stained formalin-fixed, paraffin-embedded sections of Human breast invasive ductal carcinoma. The recommended concentrations are 2.5-5.5 ug/ml with an overnight incubation at 4°C. An HRP-labeled polymer detection system was used with a DAB chromogen. Heat induced antigen retrieval with a pH 6.0 Sodium Citrate buffer is recommended.