

## Product datasheet for **PP1073B2**

### VEGFA Rabbit Polyclonal Antibody

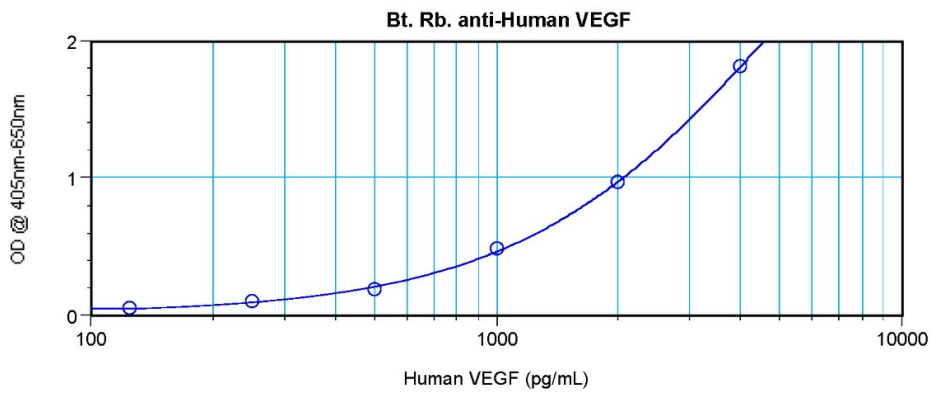
#### Product data:

Product Type:	Primary Antibodies
Applications:	ELISA, WB
Recommended Dilution:	<p><b>Direct ELISA:</b> To detect Human VEGF by Direct ELISA (using 100 µl/well antibody solution) this antibody can be used at ~1.0 µg/ml. This Biotin conjugated antibody allows the detection of 0.2-0.4 ng/well of recombinant Human VEGF.</p> <p><b>Sandwich ELISA:</b> To detect Human VEGF by Sandwich ELISA (using 100 µl/well antibody solution) this antibody can be used at a concentration of 0.25-1.0 µg/ml. This Biotin conjugated antibody in conjunction with purified <i>Cat.-No</i> PP1073P as Capture antibody allows the detection of 2000-4000 pg/ml of recombinant Human VEGF.</p> <p><b>Western Blot:</b> To detect Human VEGF by Western Blot analysis this antibody can be used at a concentration of 0.1-0.2 µg/ml. Used in conjunction with compatible secondary reagents the detection limit for recombinant hVEGF is 1.5-3.0 ng/lane, under either reducing or non-reducing conditions.</p>
Reactivity:	Human
Host:	Rabbit
Clonality:	Polyclonal
Immunogen:	Highly pure (>98%) E.coli derived recombinant Human VEGF ( <i>Cat.-No</i> PA136).
Specificity:	This antibody reacts with Human Vascular Endothelial Growth Factor. Other species not tested.
Formulation:	<p>PBS, pH 7.2 without preservatives</p> <p>Label: Biotin</p> <p>State: Lyophilized (Sterile filtered) purified Ig fraction</p>
Reconstitution Method:	Restore in sterile PBS containing 0.1% BSA to a concentration of 0.1-1.0 mg/ml.
Purification:	Affinity Chromatography
Conjugation:	Biotin
Storage:	<p>Store lyophilized at 2-8°C for 6 months or at -20°C long term.</p> <p>After reconstitution store the antibody undiluted at 2-8°C for one month or (in aliquots) at -20°C long term.</p> <p>Avoid repeated freezing and thawing.</p>

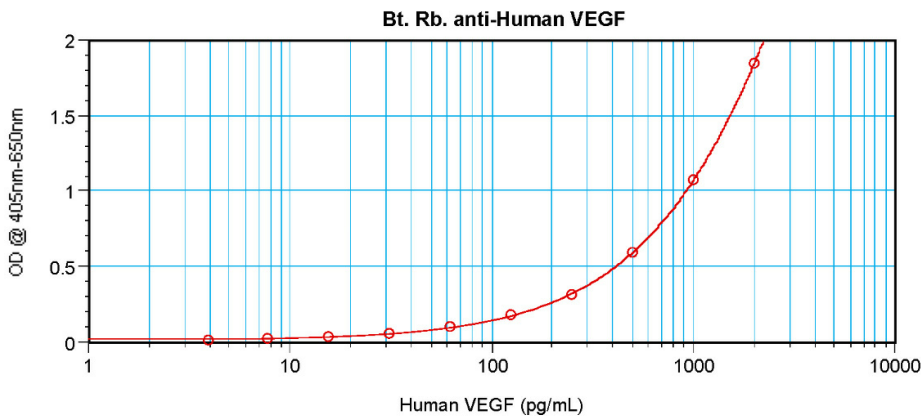


[View online »](#)

**Stability:** Shelf life: one year from despatch.  
**Gene Name:** vascular endothelial growth factor A  
**Database Link:** [Entrez Gene 7422 Human P15692](#)  
**Synonyms:** VEGFA, VEGF, VPF, Vascular endothelial growth factor A, Vascular permeability factor  
**Note:** Centrifuge vial prior to opening!

**Product images:**


Direct ELISA using VEGF-A Antibody Cat.-No [PP1073B]



Sandwich ELISA using VEGF-A Antibody Cat.-No [PP1073B]