

## Product datasheet for **PP1070P2**

### TGF alpha (TGFA) Rabbit Polyclonal Antibody

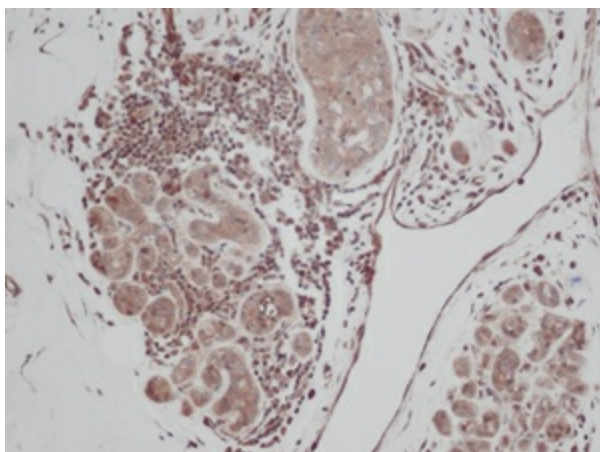
#### Product data:

Product Type:	Primary Antibodies
Applications:	ELISA, FN, IHC, WB
Recommended Dilution:	<p>Immunohistochemistry: This antibody stained formalin-fixed, paraffin-embedded sections of human breast invasive ductal carcinoma. The recommended concentration is 0.5 µg/ml with a two hour incubation at room temperature. An HRP-labeled polymer detection system was used with a DAB chromogen. Heat induced antigen retrieval with a pH 6.0 Sodium Citrate buffer is recommended.</p> <p>Neutralization: To yield one-half maximal inhibition [ND50] of the biological activity of hTGF-α (0.5 ng/ml), a concentration of 2.5-2.7 µg/ml of this antibody is required.</p> <p>ELISA:</p> <p>(Indirect): To detect hTGF-α by indirect ELISA (using 100 µl/well antibody solution) a concentration of 0.5-2.0 µg/ml of this antibody is required. This antigen affinity purified antibody, in conjunction with compatible secondary reagents, allows the detection of at least 0.2-0.4 ng/well of recombinant hTGF-α.</p> <p>(Sandwich): To detect hTGF-α by sandwich ELISA (using 100 µl/well antibody solution) a concentration of 0.5-2.0 µg/ml of this antibody is required. This antigen affinity purified antibody, in conjunction with Biotinylated Anti-Human TGF-α (PP1070B1 or PP1070B2) as a detection antibody, allows the detection of at least 0.2-0.4 ng/well of recombinant hTGF-α.</p> <p>Western Blot: To detect hTGF-α by Western Blot analysis this antibody can be used at a concentration of 0.1-0.2 µg/ml. Used in conjunction with compatible secondary reagents the detection limit for recombinant hTGF-α is 1.5- 3.0 ng/lane, under either reducing or non-reducing conditions.</p>
Reactivity:	Human
Host:	Rabbit
Clonality:	Polyclonal
Immunogen:	Highly pure (>98%) recombinant hTGF-alpha.
Specificity:	This antibody reacts with Transforming Growth Factor alpha.
Formulation:	<p>PBS, pH 7.2 without preservatives.</p> <p>State: Aff - Purified</p> <p>State: Lyophilized purified Ig fraction.</p>
Reconstitution Method:	Restore in sterile water to a concentration of 0.1-1.0 mg/ml.



[View online »](#)

<b>Purification:</b>	Affinity chromatography.
<b>Conjugation:</b>	Unconjugated
<b>Storage:</b>	Store the antibody prior to reconstitution at -20°C. Following reconstitution the antibody can be stored at 2-8°C for one month or at -20°C for longer. Avoid repeated freezing and thawing.
<b>Stability:</b>	Shelf life: One year from despatch.
<b>Gene Name:</b>	transforming growth factor alpha
<b>Database Link:</b>	<a href="#">Entrez Gene 7039 Human P01135</a>
<b>Synonyms:</b>	Transforming growth factor alpha, ETGF
<b>Note:</b>	Centrifuge vial prior to opening!

**Product images:**

Immunohistochemistry: This antibody stained formalin-fixed, paraffin-embedded sections of human breast invasive ductal carcinoma. Tissue samples were provided by the Cooperative Human Tissue Network which is funded by the National Cancer Institute.