

Product datasheet for **PP1067P2**

SDF1 (CXCL12) (alpha) Rabbit Polyclonal Antibody

Product data:

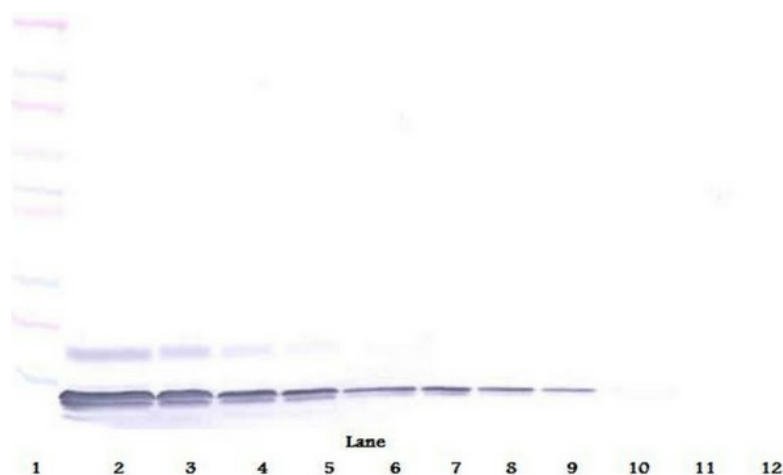
Product Type:	Primary Antibodies
Applications:	ELISA, FN, IHC, WB
Recommended Dilution:	Neutralization: To yield one-half maximal inhibition [ND50] of the biological activity of Human SDF1-alpha (100 ng/ml), a concentration of 2-4 µg/ml of this antibody is required. Sandwich ELISA: Using 100 µl/well antibody solution, a concentration of 0.5-2.0 µg/ml is required. In conjunction with Biotinylated Anti-Human SDF1-alpha (<i>Cat.-No</i> PP1067B) as a detection antibody, it allows the detection of at least 0.2-0.4 ng/well of recombinant Human SDF1-alpha. Western Blot: 0.1-0.2 µg/ml. Used in conjunction with compatible secondary reagents the detection limit for recombinant hSDF-1α is 1.5-3.0 ng/lane, under either reducing or non-reducing conditions. Immunohistochemistry: 0.5 µg/ml with an overnight incubation at 4°C. Staining of Formalin-Fixed, Paraffin-Embedded sections of Human colorectal adenocarcinoma using a HRP-labeled polymer detection system with a DAB chromogen. Heat induced antigen retrieval with a pH 6.0 Sodium citrate buffer is recommended.
Reactivity:	Human
Host:	Rabbit
Clonality:	Polyclonal
Immunogen:	Highly pure (>98%) E.coli derived recombinant Human SDF1-alpha (<i>Cat.-No</i> PA126)
Specificity:	This antibody detects Human Stromal Cell Derived Factor-1 alpha. Other species not tested.
Formulation:	PBS, pH 7.2 without preservatives. State: Aff - Purified State: Lyophilized (sterile filtered) purified Ig fraction.
Reconstitution Method:	Restore in sterile water to a concentration of 0.1-1.0 mg/ml.
Purification:	Affinity Chromatography employing immobilized Human SDF1a matrix.
Conjugation:	Unconjugated
Storage:	Store lyophilized at 2-8°C for 6 months or at -20°C long term. After reconstitution store the antibody undiluted at 2-8°C for one month or (in aliquots) at -20°C long term. Avoid repeated freezing and thawing.



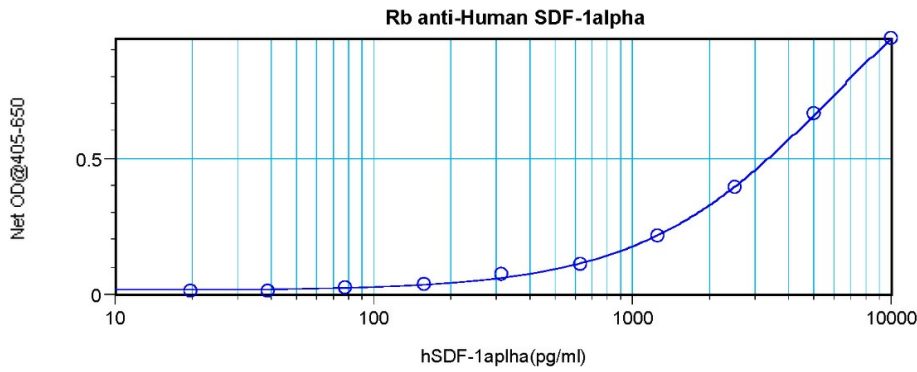
[View online »](#)

Stability:	Shelf life: one year from despatch.
Gene Name:	C-X-C motif chemokine ligand 12
Database Link:	Entrez Gene 6387 Human P48061
Background:	<p>SDF1 alpha and 1 beta are small cytokines that belong to the intercrine family, members of which activate leukocytes and are often induced by proinflammatory stimuli such as lipopolysaccharide, TNF or IL1.</p> <p>SDF1 alpha has been shown to be chemotactic for lymphocytes and is recently reported to be a ligand for CXCR4 (LESTR/fusin), a co-receptor for HIV1 entry into T cells. SDF-1 binding to CXCR4 inhibits HIV1 entry.</p>
Synonyms:	Stromal cell-derived factor 1, SDF1A, SDF1B, IRH, hIRH, PBSF
Note:	Centrifuge vial prior to opening!
Protein Families:	Druggable Genome, ES Cell Differentiation/IPS, Secreted Protein
Protein Pathways:	Axon guidance, Chemokine signaling pathway, Cytokine-cytokine receptor interaction, Leukocyte transendothelial migration

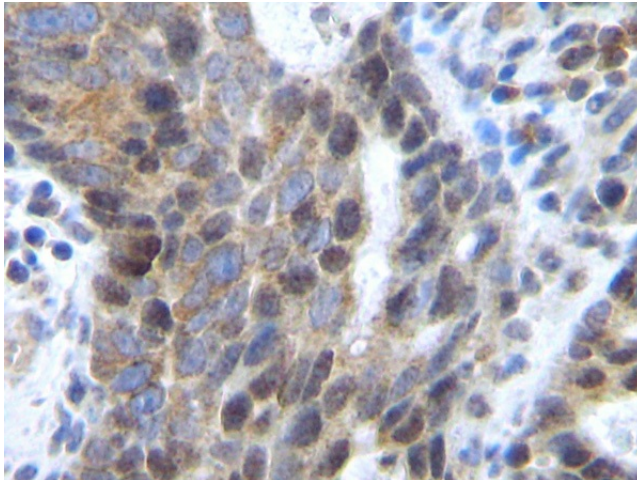
Product images:



Western Blot using CXCL12 / SDF1 Antibody Cat.-
No [PP1067P]



Sandwich ELISA using CXCL12 / SDF1 Antibody Cat.-No [PP1067P]



Formalin-Fixed, Paraffin-Embedded Sections of Human colorectal adenocarcinoma stained with CXCL12 / SDF1 Antibody Cat.-No [PP1067P]