

## Product datasheet for **PP1067P1**

### **SDF1 (CXCL12) (alpha) Rabbit Polyclonal Antibody**

#### Product data:

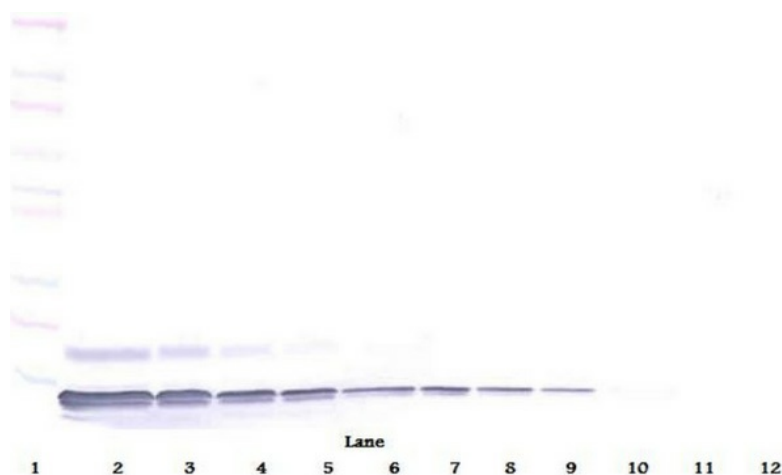
Product Type:	Primary Antibodies
Applications:	ELISA, FN, IHC, WB
Recommended Dilution:	<b>Neutralization:</b> To yield one-half maximal inhibition [ND50] of the biological activity of Human SDF1-alpha (100 ng/ml), a concentration of 2-4 µg/ml of this antibody is required. <b>Sandwich ELISA:</b> Using 100 µl/well antibody solution, a concentration of 0.5-2.0 µg/ml is required. In conjunction with Biotinylated Anti-Human SDF1-alpha ( <i>Cat.-No</i> PP1067B) as a detection antibody, it allows the detection of at least 0.2-0.4 ng/well of recombinant Human SDF1-alpha. <b>Western Blot:</b> 0.1-0.2 µg/ml. Used in conjunction with compatible secondary reagents the detection limit for recombinant hSDF-1α is 1.5-3.0 ng/lane, under either reducing or non-reducing conditions. <b>Immunohistochemistry:</b> 0.5 µg/ml with an overnight incubation at 4°C. Staining of Formalin-Fixed, Paraffin-Embedded sections of Human colorectal adenocarcinoma using a HRP-labeled polymer detection system with a DAB chromogen. Heat induced antigen retrieval with a pH 6.0 Sodium citrate buffer is recommended.
Reactivity:	Human
Host:	Rabbit
Clonality:	Polyclonal
Immunogen:	Highly pure (>98%) E.coli derived recombinant Human SDF1-alpha ( <i>Cat.-No</i> PA126)
Specificity:	This antibody detects Human Stromal Cell Derived Factor-1 alpha. Other species not tested.
Formulation:	PBS, pH 7.2 without preservatives. State: Aff - Purified State: Lyophilized (sterile filtered) purified Ig fraction.
Reconstitution Method:	Restore in sterile water to a concentration of 0.1-1.0 mg/ml.
Purification:	Affinity Chromatography employing immobilized Human SDF1a matrix.
Conjugation:	Unconjugated
Storage:	Store lyophilized at 2-8°C for 6 months or at -20°C long term. After reconstitution store the antibody undiluted at 2-8°C for one month or (in aliquots) at -20°C long term. Avoid repeated freezing and thawing.



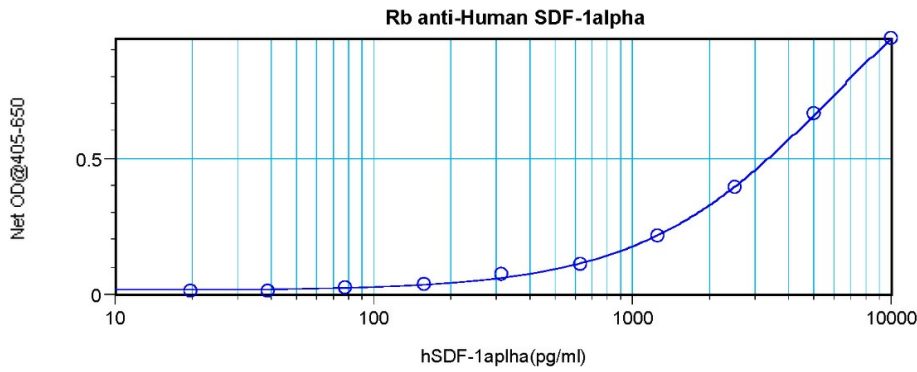
[View online »](#)

<b>Stability:</b>	Shelf life: one year from despatch.
<b>Gene Name:</b>	C-X-C motif chemokine ligand 12
<b>Database Link:</b>	<a href="#">Entrez Gene 6387 Human P48061</a>
<b>Background:</b>	SDF1 alpha and 1 beta are small cytokines that belong to the intercrine family, members of which activate leukocytes and are often induced by proinflammatory stimuli such as lipopolysaccharide, TNF or IL1. SDF1 alpha has been shown to be chemotactic for lymphocytes and is recently reported to be a ligand for CXCR4 (LESTR/fusin), a co-receptor for HIV1 entry into T cells. SDF-1 binding to CXCR4 inhibits HIV1 entry.
<b>Synonyms:</b>	Stromal cell-derived factor 1, SDF1A, SDF1B, IRH, hIRH, PBSF
<b>Note:</b>	Centrifuge vial prior to opening!
<b>Protein Families:</b>	Druggable Genome, ES Cell Differentiation/IPS, Secreted Protein
<b>Protein Pathways:</b>	Axon guidance, Chemokine signaling pathway, Cytokine-cytokine receptor interaction, Leukocyte transendothelial migration

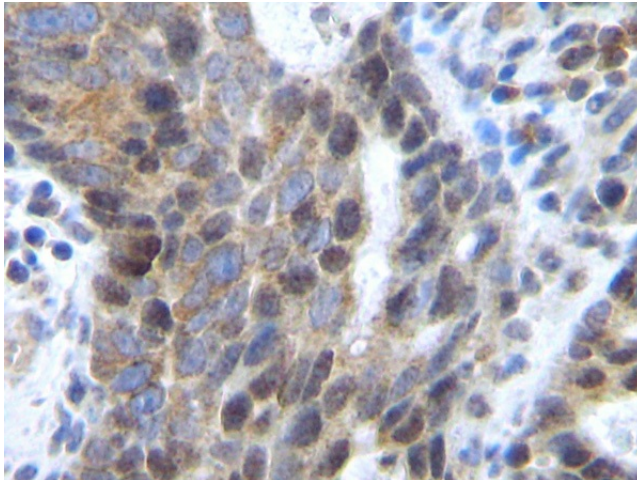
### Product images:



Western Blot using CXCL12 / SDF1 Antibody Cat.- No [PP1067P]



Sandwich ELISA using CXCL12 / SDF1 Antibody Cat.-No [PP1067P]



Formalin-Fixed, Paraffin-Embedded Sections of Human colorectal adenocarcinoma stained with CXCL12 / SDF1 Antibody Cat.-No [PP1067P]