

Product datasheet for **PP1066P1**

SCF (KITLG) Rabbit Polyclonal Antibody

Product data:

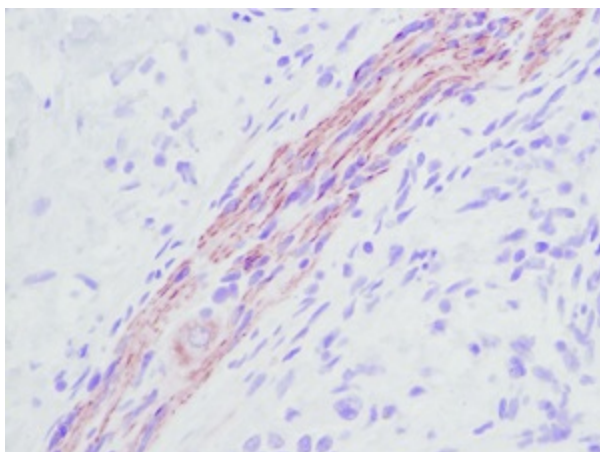
Product Type:	Primary Antibodies
Applications:	ELISA, FN, IHC, WB
Recommended Dilution:	<p>Neutralization: To yield one-half maximal inhibition [ND50] of the biological activity of hSCF (10 ng/ml), a concentration of 8 - 12 ng/ml of this antibody is required.</p> <p>ELISA: To detect hSCF by direct ELISA (using 100 µl/well antibody solution) a concentration of at least 0.5 µg/ml of this antibody is required. This antigen affinity purified antibody, in conjunction with compatible secondary reagents, allows the detection of 0.2 - 0.4 ng/well of recombinant hSCF.</p> <p>Western Blot: To detect hSCF by Western Blot analysis this antibody can be used at a concentration of 0.1 - 0.2 µg/ml. Used in conjunction with compatible secondary reagents the detection limit for recombinant hSCF is 1.5 - 3.0 ng/lane, under either reducing or non-reducing conditions.</p> <p>Immunohistochemistry: 1 µg/ml is the recommended starting dilution for frozen and paraffin sections. For paraffin sections antigen retrieval techniques may be necessary to improve staining.</p>
Reactivity:	Human
Host:	Rabbit
Clonality:	Polyclonal
Immunogen:	Highly pure (>98%) recombinant hSCF (anti-hSCF).
Specificity:	Human Stem Cell Factor (SCF).
Formulation:	<p>PBS, pH 7.2 without preservatives.</p> <p>State: Aff - Purified</p> <p>State: Lyophilized purified Ig fraction.</p>
Reconstitution Method:	Restore in sterile water to a concentration of 0.1-1.0 mg/ml.
Purification:	Affinity chromatography.
Conjugation:	Unconjugated
Storage:	<p>Store the antibody prior to reconstitution at -20°C. Following reconstitution the antibody can be stored at 2-8°C for one month or at -20°C for longer.</p> <p>Avoid repeated freezing and thawing.</p>



[View online »](#)

Stability:	Shelf life: One year from despatch.
Gene Name:	KIT ligand
Database Link:	Entrez Gene 4254 Human P21583
Synonyms:	KITL, Kit ligand, c-Kit ligand, Stem cell factor, Mast cell growth factor, MGF
Note:	Centrifuge vial prior to opening!
Protein Families:	Druggable Genome, Transmembrane
Protein Pathways:	Cytokine-cytokine receptor interaction, Hematopoietic cell lineage, Melanogenesis, Pathways in cancer

Product images:



Immunohistochemistry: This antibody stained formalin-fixed paraffin-embedded sections of human pancreas adenocarcinoma tissue. The recommended concentration is 0.5 µg/ml - 1.0 µg/ml with an overnight incubation at 4 °C. An HRP-labeled polymer detection system was used with an alcohol-soluble AEC chromogen. Optimal results for these conditions were achieved with enzyme induced antigen retrieval (proteinase K) at room temperature. Tissue samples were provided by the Cooperative Human Tissue Network which is funded by the National Cancer Institute.