

## Product datasheet for **PP1062P2**

### PDGF beta (PDGFB) (PDGF-BB) Rabbit Polyclonal Antibody

#### Product data:

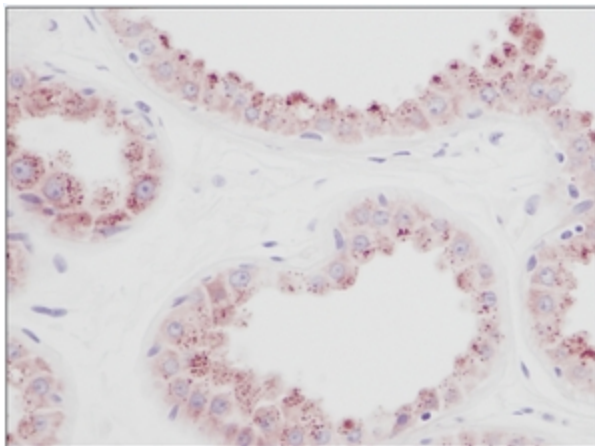
Product Type:	Primary Antibodies
Applications:	ELISA, FN, IHC, WB
Recommended Dilution:	<b>Neutralization:</b> To yield one-half maximal inhibition [ND50] of the biological activity of Human PDGF-BB (2.5 ng/ml), a concentration of 0.03-0.04 µg/ml of this antibody is required. <b>Indirect ELISA:</b> To detect Human PDGF-BB by indirect ELISA (using 100 µl/well antibody solution) a concentration of 0.5-2.0 µg/ml of this antibody is required. This antigen affinity purified antibody, in conjunction with compatible secondary reagents, allows the detection of at least 0.2-0.4 ng/well of recombinant Human PDGF-BB. <b>Sandwich ELISA:</b> To detect Human PDGF-BB by Sandwich ELISA (using 100 µl/well antibody solution) a concentration of 0.5-2.0 µg/ml of this antibody is required. This antigen affinity purified antibody, in conjunction with Biotinylated Anti-Human PDGF-BB (PP1062B1 or PP1062B2) as a detection antibody, allows the detection of at least 0.2-0.4 ng/well of recombinant Human PDGF-BB. <b>Western Blot:</b> To detect Human PDGF-BB by Western Blot analysis this antibody can be used at a concentration of 0.1-0.2 µg/ml. Used in conjunction with compatible secondary reagents the detection limit for recombinant Human PDGF-BB is 1.5-3.0 ng/lane, under either reducing or non-reducing conditions. <b>Immunohistochemistry on Formalin-Fixed, Paraffin-Embedded Sections:</b> 1.0 µg/ml overnight at 4°C. An HRP-labeled polymer detection system was used with a non-alcohol soluble AEC chromogen and a Proteinase K antigen retrieval. <i>Positive Control:</i> Normal Human Skin.
Reactivity:	Human
Host:	Rabbit
Clonality:	Polyclonal
Immunogen:	Highly pure (>98%) E.coli derived recombinant Human PDGF-BB.
Specificity:	Recognizes Human PDGF-BB.
Formulation:	PBS, pH 7.2 without preservatives. State: Aff - Purified State: Lyophilized (sterile filtered) purified Ig fraction.
Reconstitution Method:	Restore in sterile water to a concentration of 0.1-1.0 mg/ml.



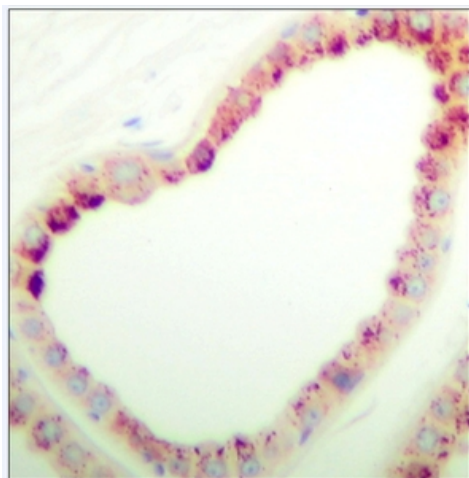
[View online »](#)

<b>Purification:</b>	Affinity Chromatography employing immobilized Human PDGF-BB matrix.
<b>Conjugation:</b>	Unconjugated
<b>Storage:</b>	The lyophilized antibody is stable at -20°C for one year from despatch. The reconstituted antibody is stable for two weeks at 2-8°C. Frozen aliquots are stable for six months when stored at -20°C. Avoid repeated freezing and thawing.
<b>Gene Name:</b>	Homo sapiens platelet derived growth factor subunit B (PDGFB), transcript variant 1
<b>Database Link:</b>	<a href="#">Entrez Gene 5155 Human P01127</a>
<b>Background:</b>	Platelet Derived Growth Factor (PDGF) is the major serum mitogen for cells of mesenchymal origin in humans. The biologically active protein is a dimer composed of two related polypeptides designated A and B, the dimers being connected by disulfide bonds. The PDGF protein has been implicated both directly as well as indirectly in several pathological states including neoplasia, arthritis, arteriosclerosis and bone marrow sclerosis.
<b>Synonyms:</b>	Platelet-derived growth factor subunit B, PDGF beta, PDGF B, PDGF-B, Platelet-derived growth factor beta, PDGF subunit B, Platelet-derived growth factor B chain, PDGF2, PDGF-2, c-Sis, SIS, Becaplermin
<b>Protein Families:</b>	Druggable Genome
<b>Protein Pathways:</b>	Cytokine-cytokine receptor interaction, Focal adhesion, Gap junction, Glioma, MAPK signaling pathway, Melanoma, Pathways in cancer, Prostate cancer, Regulation of actin cytoskeleton, Renal cell carcinoma

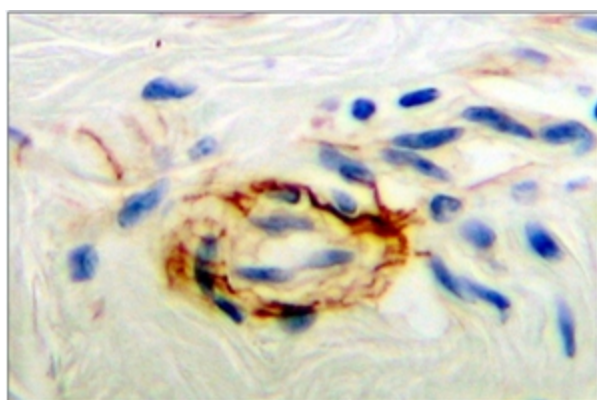
### Product images:



Formalin-Fixed, Paraffin-Embedded Sections of normal Human skin stained with PDGF-BB antibody Cat.-No [PP1062P]



Formalin-Fixed, Paraffin-Embedded Sections of normal Human skin stained with PDGF-BB antibody Cat.-No [PP1062P]



Formalin-Fixed, Paraffin-Embedded Sections of normal Human skin stained with PDGF-BB antibody Cat.-No [PP1062P]