

Product datasheet for **PP1060P2**

Oncostatin M (OSM) Rabbit Polyclonal Antibody

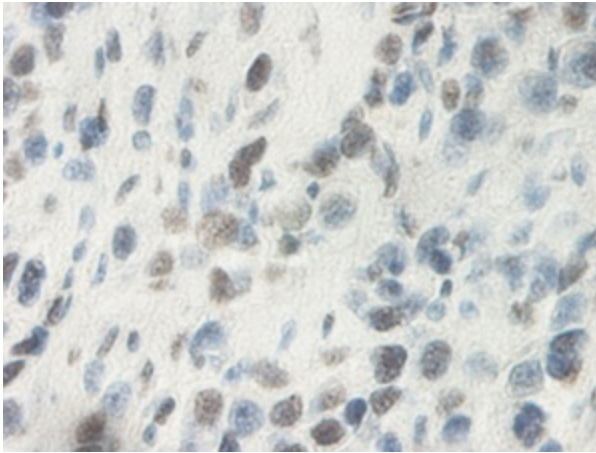
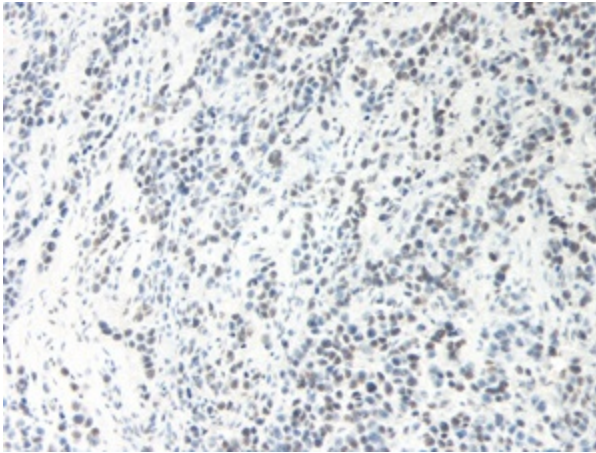
Product data:

Product Type:	Primary Antibodies
Applications:	ELISA, FN, IHC, WB
Recommended Dilution:	Neutralization: To yield one-half maximal inhibition [ND50] of the biological activity of Oncostatin M (10 ng/ml), a concentration of 0.1 - 0.175 µg/ml of this antibody is required. Immunohistochemistry: We recommend use of 1 µg/ml as a starting dilution. Paraffin sections may require pretreatment like Proteinase K or Trypsin predigestion to improve staining. ELISA: To detect Oncostatin M by direct ELISA (using 100 µl/well antibody solution) a concentration of at least 0.5 µg/ml of this antibody is required. This antigen affinity purified antibody, in conjunction with compatible secondary reagents, allows the detection of 0.2 - 0.4 ng/well of recombinant Oncostatin M. Western Blot: use a concentration of 0.1 - 0.2 µg/ml. Used in conjunction with compatible secondary reagents the detection limit for recombinant Oncostatin M is 1.5 - 3.0 ng/lane, under either reducing or non-reducing conditions. Immunohistochemistry: Formalin-fixed, paraffin-embedded sections. Recommended concentration is 0.5µg/ml with an overnight incubation at 4 °C.
Reactivity:	Human
Host:	Rabbit
Clonality:	Polyclonal
Immunogen:	Highly pure (>98%) recombinant Oncostatin m:
Specificity:	Human Oncostatin M.
Formulation:	PBS, pH 7.2 without preservatives. State: Aff - Purified State: Lyophilized purified Ig fraction.
Reconstitution Method:	Restore in sterile water to a concentration of 0.1-1.0 mg/ml.
Purification:	Affinity chromatography.
Conjugation:	Unconjugated
Storage:	Store the antibody prior to reconstitution at -20°C. Following reconstitution the antibody can be stored at 2-8°C for one month or at -20°C for longer. Avoid repeated freezing and thawing.



[View online »](#)

Stability:	Shelf life: One year from despatch.
Gene Name:	oncostatin M
Database Link:	Entrez Gene 5008 Human P13725
Synonyms:	OSM
Note:	Centrifuge vial prior to opening!

Product images:

Immunohistochemistry: This Oncostatin-M antibody stained formalin-fixed, paraffin embedded sections of human breast malignant ductal adenocarcinoma. The recommended concentration is 0.5ug/ml with an overnight incubation at 4°C. An HRP-labeled polymer detection system was used with a DAB chromogen and a proteinase K antigen retrieval. Tissue samples were provided by the Cooperative Human Tissue Network, which is funded by the National Cancer Institute.