

Product datasheet for **PP1051P2**

CCL4L1 Rabbit Polyclonal Antibody

Product data:

Product Type: Primary Antibodies

Applications: ELISA, FN, IHC, WB

Recommended Dilution: **Neutralization:** To yield one-half maximal inhibition [ND50] of the biological activity of hMIP-1 beta (50.00 ng/ml), a concentration of 1.75-3.00 µg/ml of this antibody is required.

Direct ELISA: To detect Human MIP-1 beta by direct ELISA (using 100µl/well antibody solution) a concentration of at least 0.5 µg/ml of this antibody is required. This antigen affinity purified antibody, in conjunction with compatible secondary reagents, allows the detection of 0.2-0.4 ng/well of recombinant Human MIP-1 beta.

Sandwich ELISA: To detect Human MIP-1 beta by Sandwich ELISA (using 100µl/well antibody solution) a concentration of 0.5-2.0 µg/ml of this antibody is required. This antigen affinity purified antibody, in conjunction with Biotin conjugated Anti-Human MIP1 beta antibody (*Cat.-No* PP1051B1 or PP1051B2), allows the detection of 0.2-0.4 ng/well of recombinant Human MIP-1 beta.

Western Blot: To detect Human MIP-1 beta by Western Blot analysis this antibody can be used at a concentration of 0.1-0.2 µg/ml. Used in conjunction with compatible secondary reagents the detection limit for recombinant Human MIP-1 beta is 1.5-3.0 ng/lane, under either *reducing* or *non-reducing conditions*.

Immunohistochemistry on Formalin-Fixed, Paraffin-Embedded Sections: 1.0 µg/ml with 2 hour incubation at room temperature. An HRP-labeled polymer detection system was used with a DAB chromogen. Heat induced antigen retrieval with a pH 6.0 sodium citrate buffer is recommended.

Reactivity: Human

Host: Rabbit

Clonality: Polyclonal

Immunogen: Highly pure (> 98%) *E.coli* derived recombinant Human MIP-1 beta (*Cat.-No* PA107)

Specificity: Recognizes Human Macrophage Inflammatory Protein-1 beta (MIP-1b). Other species not tested.

Formulation: PBS, pH 7.2 without preservatives

State: Aff - Purified

State: Lyophilized (sterile filtered) purified Ig fraction

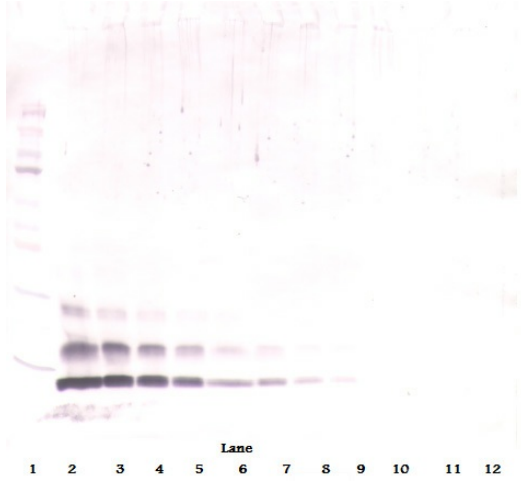
Reconstitution Method: Restore in sterile water to a concentration of 0.1-1.0 mg/ml.



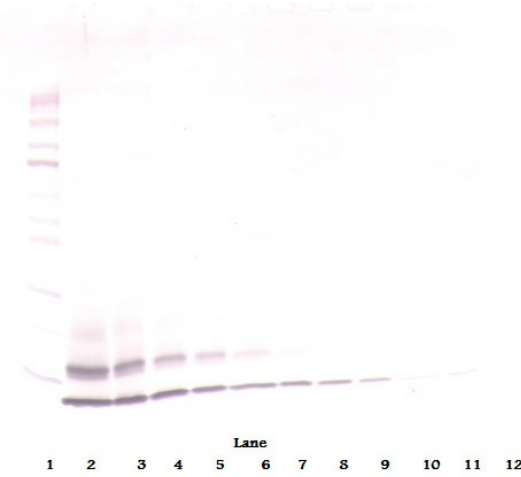
[View online >](#)

Purification:	Affinity Chromatography employing immobilized Human MIP-1beta matrix.
Conjugation:	Unconjugated
Storage:	Prior to reconstitution store at 2-8°C. Following reconstitution store undiluted at 2-8°C for one month or (in aliquots) at -20°C for longer. Avoid repeated freezing and thawing.
Stability:	Shelf life: one year from despatch.
Gene Name:	C-C motif chemokine ligand 4 like 1
Database Link:	Entrez Gene 388372 Human Q8NHW4
Background:	MIP1 alpha and MIP1 beta were originally co-purified from medium conditioned by an LPS-stimulated murine macrophage cell line. Human MIP1 beta refers to the products of several independently cloned cDNAs, including Act2, PAT 744, hH400, G26, HIMAP, HC21, and MAD 5a. The predicted protein products of these cDNAs represent variants that are between 94% - 98% identical and these proteins are all approximately 75% homologous to murine MIP1 beta. MIP1 beta also shares approximately 70% amino acid identity with MIP1 alpha. MIP1 proteins are expressed primarily in T cells, B cells, and monocytes after antigen or mitogen stimulation. The MIP1 proteins have chemoattractant and adhesive effects on lymphocytes, with MIP1 alpha and MIP1 beta preferentially attracting CD8+ and CD4+ T cells, respectively. A signal transducing receptor designated the CC chemokine receptor 1 (CC CKR1) with seven transmembrane domains that binds MIP1 alpha, MIP1 beta, MCP1 and RANTES with varying affinities has been isolated.
Synonyms:	CCL-4, MIP-1-beta, LAG1, MIP1B, SCYA4, Small-inducible cytokine A4, PAT744, Protein H400, SIS-gamma, HC21
Note:	Centrifuge vial prior to opening!

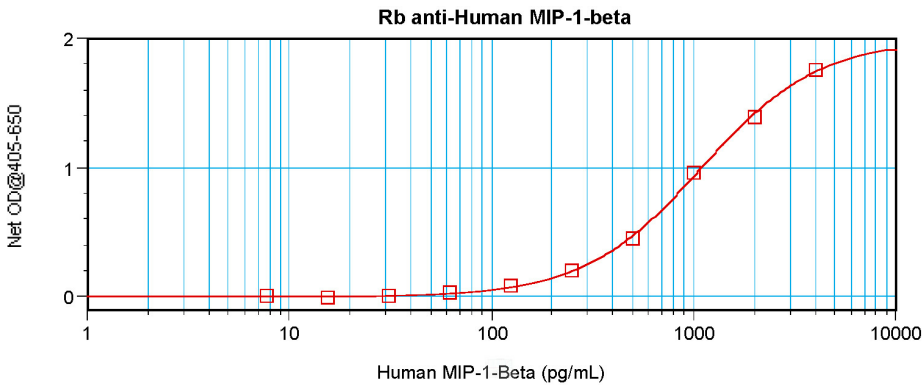
Product images:



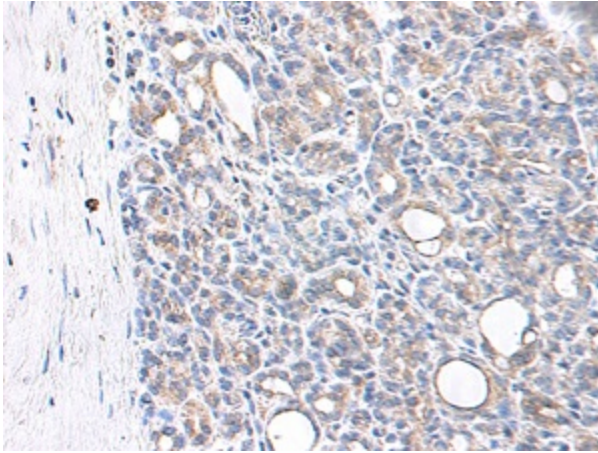
Western Blot (Reduced) using MIP1 beta / CCL4 Antibody Cat.-No [PP1051P1]



Western Blot (Unreduced) using MIP1 beta / CCL4 Antibody Cat.-No [PP1051P1]



Sandwich ELISA using MIP1 beta / CCL4 Antibody Cat.-No [PP1051P]



Immunohistochemistry: This MIP1 beta antibody stained formalin-fixed, paraffin-embedded sections of human pancreas adenocarcinoma. The recommended concentration is 1.0 ug/ml with 2 hour incubation at room temperature. An HRP-labeled polymer detection system was used with a DAB chromogen. Heat induced antigen retrieval with a pH 6.0 sodium citrate buffer is recommended. Tissue samples were provided by the Cooperative Human Tissue Network, which is funded by the National Cancer Institute.