

Product datasheet for **PP1049P1**

MDC (CCL22) Rabbit Polyclonal Antibody

Product data:

Product Type:	Primary Antibodies
Applications:	ELISA, WB
Recommended Dilution:	Sandwich ELISA: To detect Human MDC by direct ELISA (using 100 µl/well antibody solution) a concentration of at least 0.5 µg/ml of this antibody is required. This antigen affinity purified antibody, in conjunction with Biotin conjugated Anti-Human MDC (<i>Cat.-No</i> PP1049B1 or PP1049B2) as a Detection antibody, allows the detection of 0.2-0.4 ng/well of recombinant Human MDC. Western Blot: To detect Human MDC by Western Blot analysis this antibody can be used at a concentration of 0.1- 0.2 µg/ml. Used in conjunction with compatible secondary reagents the detection limit for recombinant hMDC is 1.5-3.0 ng/lane, under either reducing or non-reducing conditions.
Reactivity:	Human
Host:	Rabbit
Clonality:	Polyclonal
Immunogen:	Highly pure (>98%), E.coli derived recombinant Human MDC (<i>Cat.-No</i> PA104)
Specificity:	Recognizes Human Macrophage Derived Chemokine (MDC, CCL22). Other species not tested.
Formulation:	PBS, pH 7.2 without preservatives. State: Aff - Purified State: Lyophilized (Sterile filtered) purified Ig fraction
Reconstitution Method:	Restore in sterile water to a concentration of 0.1-1.0 mg/ml.
Purification:	Affinity Chromatography employing an immobilized Human MDC matrix.
Conjugation:	Unconjugated
Storage:	Store lyophilized at 2-8°C for 6 months or at -20°C long term. After reconstitution store the antibody undiluted at 2-8°C for one month or (in aliquots) at -20°C long term. Avoid repeated freezing and thawing.
Stability:	Shelf life: one year from despatch.
Gene Name:	C-C motif chemokine ligand 22



[View online »](#)

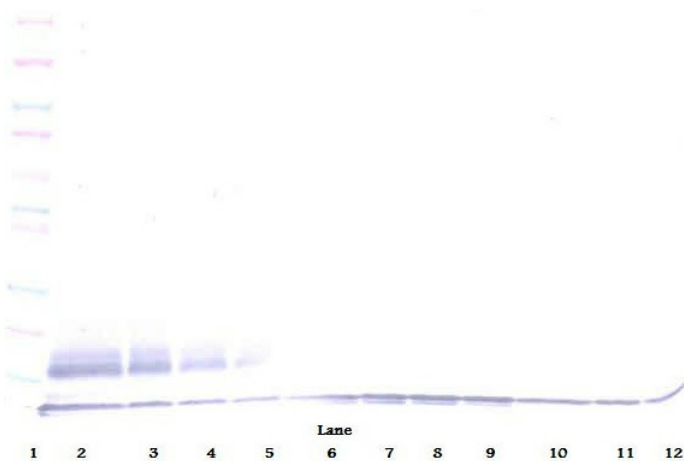
Database Link: [Entrez Gene 6367 Human O00626](#)

Background: The MDC gene is one of several Cys-Cys (CC) cytokine genes which are clustered on the q arm of chromosome 16. Cytokines are a family of secreted proteins involved in immunoregulatory and inflammatory processes. The CC cytokines are proteins characterized by two adjacent cysteines. The cytokine encoded by MDC displays chemotactic activity for natural killer cells, chronically activated T lymphocytes, monocytes and dendritic cells. It has no chemoattractant activity for eosinophils, neutrophils and resting T lymphocytes and also displays a mild activity for primary activated T lymphocytes. The product of this gene binds to chemokine receptor CCR4. This chemokine may play a role in the trafficking of activated T lymphocytes to inflammatory sites and other aspects of activated T lymphocyte physiology.

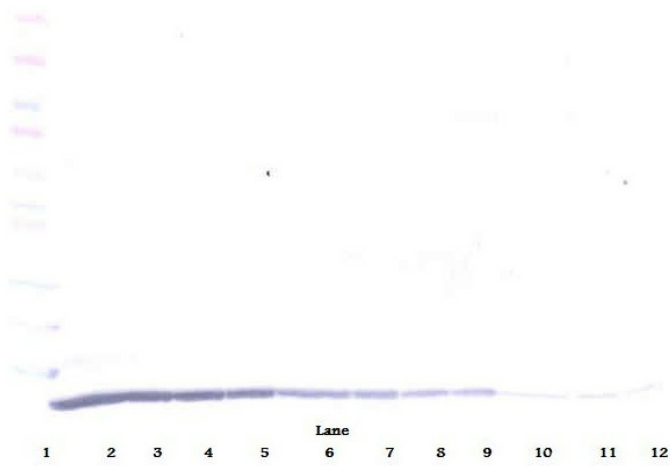
Synonyms: SCYA22, CC chemokine STCP-1

Note: Centrifuge vial prior to opening!

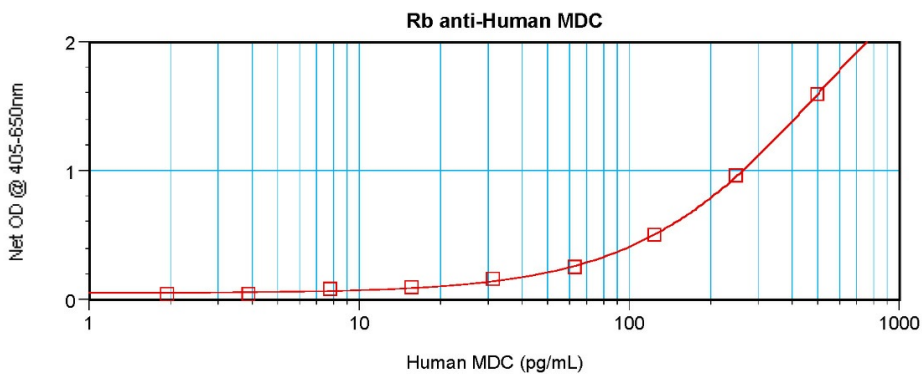
Product images:



Western Blot (Unreduced) using MDC Antibody
Cat.-No [PP1049P]



Western Blot (Reduced) using MDC Antibody Cat.-No [PP1049P]



Sandwich ELISA using MDC Antibody Cat.-No [PP1049P]