

## Product datasheet for **PP1048P2**

### M-CSF (CSF1) Rabbit Polyclonal Antibody

#### Product data:

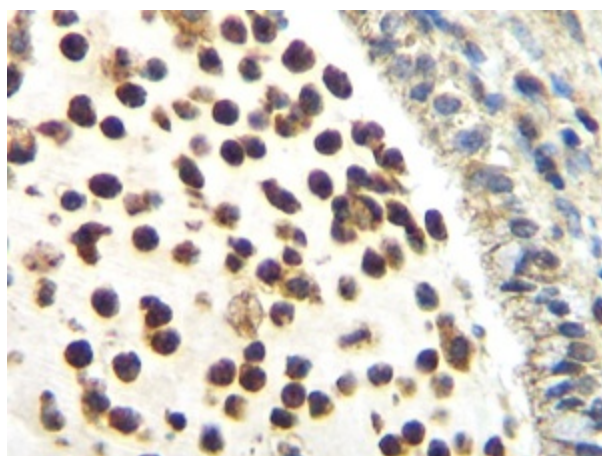
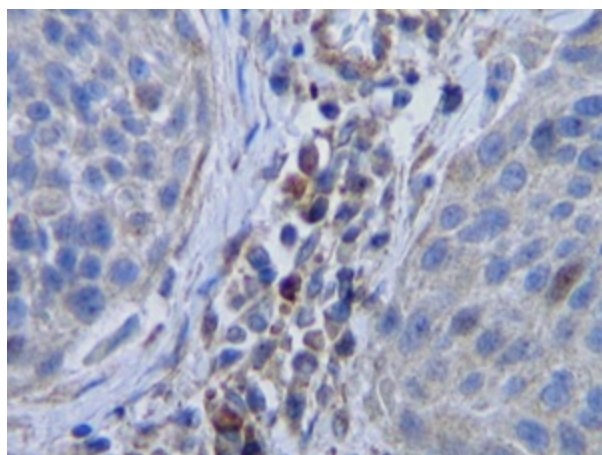
<b>Product Type:</b>	Primary Antibodies
<b>Applications:</b>	ELISA, FN, IHC, WB
<b>Recommended Dilution:</b>	Neutralization: To yield one-half maximal inhibition [ND50] of the biological activity of hM-CSF (7.0 ng/ml), a concentration of 0.02-0.03 µg/ml of this antibody is required. ELISA: (Indirect): To detect hM-CSF by indirect ELISA (using 100 µl/well antibody solution) a concentration of 0.5-2.0 µg/ml of this antibody is required. This antigen affinity purified antibody, in conjunction with compatible secondary reagents, allows the detection of at least 0.2-0.4 ng/well of recombinant hM-CSF. (Sandwich): To detect hM-CSF by sandwich ELISA (using 100 µl/well antibody solution) a concentration of 0.5-2.0 µg/ml of this antibody is required. This antigen affinity purified antibody, in conjunction with Biotinylated Anti-Human M-CSF (PP1048B) as a detection antibody, allows the detection of at least 0.2-0.4 ng/well of recombinant hM-CSF. Western Blot: To detect hM-CSF by Western Blot analysis this antibody can be used at a concentration of 0.1-0.2 µg/ml. Used in conjunction with compatible secondary reagents the detection limit for recombinant hM-CSF is 1.5-3.0 ng/lane, under either reducing or non-reducing conditions. Immunohistochemistry: 0.5 µg/ml with an overnight incubation at 4°C. This antibody stained Formalin-Fixed, Paraffin-Embedded sections of Human cervical squamous cell carcinoma. An HRP-labeled polymer detection system was used with a DAB chromogen. Heat induced antigen retrieval with a pH 6.0 Sodium Citrate buffer is recommended.
<b>Reactivity:</b>	Human
<b>Host:</b>	Rabbit
<b>Clonality:</b>	Polyclonal
<b>Immunogen:</b>	Highly pure (>98%) recombinant hM-CSF (human M-CSF).
<b>Specificity:</b>	Human Macrophage Colony Stimulating Factor (M-CSF)
<b>Formulation:</b>	PBS, pH 7.2 without preservatives. State: Aff - Purified State: Lyophilized purified Ig fraction.
<b>Reconstitution Method:</b>	Restore in sterile water to a concentration of 0.1-1.0 mg/ml.



[View online »](#)

<b>Purification:</b>	Affinity chromatography.
<b>Conjugation:</b>	Unconjugated
<b>Storage:</b>	Store the antibody prior to reconstitution at -20°C. Following reconstitution the antibody can be stored at 2-8°C for one month or at -20°C for longer. Avoid repeated freezing and thawing.
<b>Stability:</b>	Shelf life: One year from despatch.
<b>Gene Name:</b>	colony stimulating factor 1
<b>Database Link:</b>	<a href="#">Entrez Gene 1435 Human P09603</a>
<b>Synonyms:</b>	CSF1, MCSF, Macrophage colony-stimulating factor 1, Macrophage Colony Stimulating Factor
<b>Note:</b>	Centrifuge vial prior to opening!

### Product images:



Immunohistochemistry: This M-CSF antibody stained formalin-fixed, paraffin embedded sections of human cervical squamous cell carcinoma. The recommended concentration is 0.5 ug/ml with an overnight incubation at 4°C. An HRP-labeled polymer detection system was used with a DAB chromogen. Heat induced antigen retrieval with a pH 6.0 sodium citrate buffer is recommended. Tissue samples were provided by the Cooperative Human Tissue Network, which is funded by the National Cancer Institute.