

## Product datasheet for **PP1048P1**

### M-CSF (CSF1) Rabbit Polyclonal Antibody

#### Product data:

**Product Type:** Primary Antibodies

**Applications:** ELISA, FN, IHC, WB

**Recommended Dilution:** **Neutralization:** To yield one-half maximal inhibition [ND50] of the biological activity of hM-CSF (7.0 ng/ml), a concentration of 0.02-0.03 µg/ml of this antibody is required.  
**Indirect ELISA:** To detect hM-CSF by indirect ELISA (using 100 µl/well antibody solution) a concentration of 0.5-2.0 µg/ml of this antibody is required. This antigen affinity purified antibody, in conjunction with compatible secondary reagents, allows the detection of at least 0.2-0.4 ng/well of recombinant hM-CSF.  
**Sandwich ELISA:** To detect hM-CSF by Sandwich ELISA (using 100 µl/well antibody solution) a concentration of 0.5-2.0 µg/ml of this antibody is required. This antigen affinity purified antibody, in conjunction with Biotinylated Anti-Human M-CSF (Cat.-No PP1048B) as a detection antibody, allows the detection of at least 0.2-0.4 ng/well of recombinant hM-CSF.  
**Western Blot:** To detect hM-CSF by Western Blot analysis this antibody can be used at a concentration of 0.1-0.2 µg/ml. Used in conjunction with compatible secondary reagents the detection limit for recombinant hM-CSF is 1.5-3.0 ng/lane, under either reducing or non-reducing conditions.  
**Immunohistochemistry:** 0.5 µg/ml with an overnight incubation at 4°C.  
This antibody stained Formalin-Fixed, Paraffin-Embedded sections of Human cervical squamous cell carcinoma. An HRP-labeled polymer detection system was used with a DAB chromogen. Heat induced antigen retrieval with a pH 6.0 Sodium Citrate buffer is recommended.

**Reactivity:** Human

**Host:** Rabbit

**Clonality:** Polyclonal

**Immunogen:** Highly pure (>98%) E.coli derived recombinant Human M-CSF (hM-CSF) (Cat.-No PA102)

**Specificity:** Recognizes Human Macrophage Colony Stimulating Factor (M-CSF).  
Other species not tested.

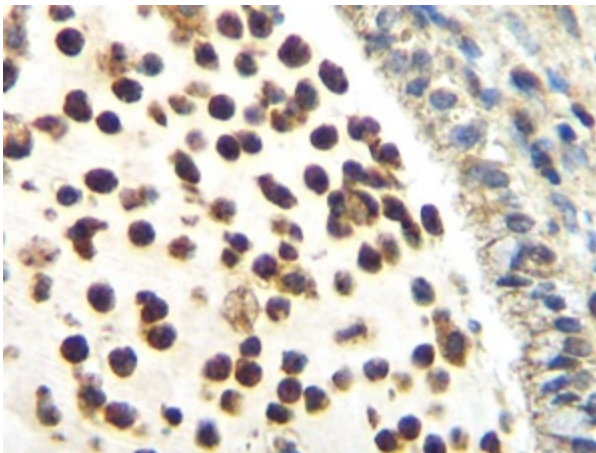
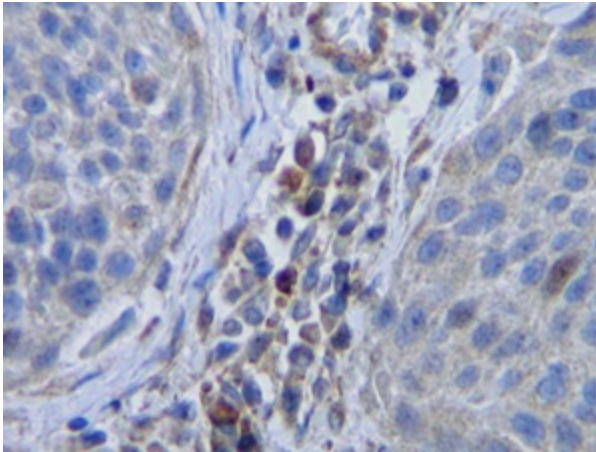
**Formulation:** PBS, pH 7.2 without preservatives  
State: Aff - Purified  
State: Lyophilized (sterile filtered) purified Ig fraction

**Reconstitution Method:** Restore in sterile water to a concentration of 0.1-1.0 mg/ml.



[View online »](#)

<b>Purification:</b>	Affinity Chromatography
<b>Conjugation:</b>	Unconjugated
<b>Storage:</b>	Prior to reconstitution store at 2-8°C. Following reconstitution store undiluted at 2-8°C for one month or (in aliquots) at -20°C for longer. Avoid repeated freezing and thawing.
<b>Stability:</b>	Shelf life: one year from despatch.
<b>Gene Name:</b>	colony stimulating factor 1
<b>Database Link:</b>	<a href="#">Entrez Gene 1435 Human P09603</a>
<b>Synonyms:</b>	CSF1, MCSF, Macrophage colony-stimulating factor 1, Macrophage Colony Stimulating Factor
<b>Note:</b>	Centrifuge vial prior to opening!

**Product images:**

Immunohistochemistry: This M-CSF antibody stained formalin-fixed, paraffin embedded sections of human cervical squamous cell carcinoma. The recommended concentration is 0.5 ug/ml with an overnight incubation at 4°C. An HRP-labeled polymer detection system was used with a DAB chromogen. Heat induced antigen retrieval with a pH 6.0 sodium citrate buffer is recommended. Tissue samples were provided by the Cooperative Human Tissue Network, which is funded by the National Cancer Institute.