

## Product datasheet for **PP1046P2**

### MCP3 (CCL7) Goat Polyclonal Antibody

#### Product data:

Product Type:	Primary Antibodies
Applications:	ELISA, WB
Recommended Dilution:	<b>Sandwich ELISA:</b> To detect Human MCP-3 by sandwich ELISA (using 100 µl/well antibody solution) a concentration of 0.5-2.0 µg/ml of this antibody is required. This antigen affinity purified antibody, in conjunction with Biotinylated Anti-Human MCP-3 (Cat.-No PP1046B) as a detection antibody, allows the detection of at least 0.2-0.4 ng/well of recombinant Human MCP-3. <b>Western Blot:</b> To detect hMCP-3 by Western Blot analysis this antibody can be used at a concentration of 0.1-0.2 µg/ml. Used in conjunction with compatible secondary reagents the detection limit for recombinant Human MCP-3 is 1.5-3.0 ng/lane, under either reducing or non-reducing conditions.
Reactivity:	Human
Host:	Goat
Clonality:	Polyclonal
Immunogen:	Highly pure (> 98%) E.coli derived recombinant Human MCP3 / CCL7 (Cat.-No PA100)
Specificity:	This antibody recognizes Human Macrophage Chemotactic Protein-3 (MCP-3/CCL7). Other species not tested.
Formulation:	PBS, pH 7.2 without preservatives State: Aff - Purified State: Lyophilized purified Ig fraction
Reconstitution Method:	Restore in sterile water to a concentration of 0.1-1.0 mg/ml.
Purification:	Affinity Chromatography employing immobilized Human MCP-3 matrix.
Conjugation:	Unconjugated
Storage:	Store lyophilized at 2-8°C for 6 months or at -20°C long term. After reconstitution store the antibody undiluted at 2-8°C for one month or (in aliquots) at -20°C long term. Avoid repeated freezing and thawing.
Stability:	Shelf life: one year from despatch.
Gene Name:	C-C motif chemokine ligand 7



[View online »](#)

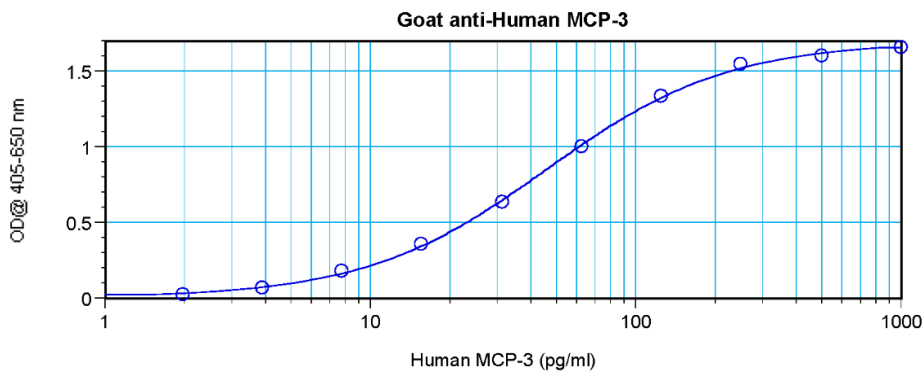
Database Link: [Entrez Gene 6354 Human P80098](#)

**Background:** This is a secreted chemokine which attracts macrophages during inflammation and metastasis. It is a member of the C-C subfamily of chemokines which are characterized by having two adjacent cysteine residues. The protein is an in vivo substrate of matrix metalloproteinase 2, an enzyme which degrades components of the extracellular matrix.

**Synonyms:** Small-inducible cytokine A7, CCL-7, MCP-3, C-C motif chemokine 7, SCYA6, SCYA7, NC28

**Note:** Centrifuge vial prior to opening!

### Product images:



Sandwich ELISA using MCP3 / CCL7 Antibody  
Cat.-No [PP1046P]