

## Product datasheet for **PP1044P1**

### MCP1 (CCL2) Rabbit Polyclonal Antibody

#### Product data:

Product Type:	Primary Antibodies
Applications:	ELISA, FN, IHC, WB
Recommended Dilution:	<b>Neutralization:</b> To yield one-half maximal inhibition [ND50] of the biological activity of hMCP-1(MCAF) (10.0 ng/ml), a concentration of 3.0-5.0 µg/ml of this antibody is required. Results obtained with a previous lots. <b>Sandwich ELISA:</b> To detect Human MCP-1(MCAF) by Sandwich ELISA (using 100 µl/well antibody solution) a concentration of 0.5-2.0 µg/ml of this antibody is required. This antigen affinity purified antibody, in conjunction with Biotinylated Anti-Human MCP-1/MCAF (Cat.-No PP1044B) as a detection antibody, allows the detection of at least 0.2-0.4 ng/well of recombinant Human MCP-1 (MCAF). <b>Western Blot:</b> To detect Human MCP-1 (MCAF) by Western Blot analysis this antibody can be used at a concentration of 0.1-0.2 µg/ml. Used in conjunction with compatible secondary reagents the detection limit for recombinant Human MCP-1(MCAF) is 1.5-3.0 ng/lane, under either reducing or non-reducing conditions. <b>Immunohistochemistry</b> 2.5 µg/ml for 2hrs at RT. This antibody stained Formalin-Fixed, Paraffin-Embedded Sections of Human breast invasive ductal carcinoma. An HRP-labeled polymer detection system was used with a DAB Chromogen. Heat induced antigen retrieval with a pH 6.0 Sodium Citrate buffer is recommended ( <b>See Figure 1 and 2</b> )
Reactivity:	Human
Host:	Rabbit
Clonality:	Polyclonal
Immunogen:	Highly pure (>98%) E.coli derived recombinant Human MCP-1 (MCAF)(Cat.-No PA098)
Specificity:	Human Macrophage Chemotactic Protein-1 (MCP-1).
Formulation:	PBS, pH 7.2 without preservatives. State: Aff - Purified State: Lyophilized (sterile filtered) purified Ig fraction.
Reconstitution Method:	Restore in sterile water to a concentration of 0.1-1.0 mg/ml.
Purification:	Affinity Chromatography.
Conjugation:	Unconjugated



[View online >](#)

<b>Storage:</b>	Store lyophilized at 2-8°C for 6 months or at -20°C long term. After reconstitution store the antibody undiluted at 2-8°C for one month or (in aliquots) at -20°C long term. Avoid repeated freezing and thawing.
<b>Stability:</b>	Shelf life: one year from despatch.
<b>Gene Name:</b>	C-C motif chemokine ligand 2
<b>Database Link:</b>	<a href="#">Entrez Gene 6347 Human P13500</a>
<b>Background:</b>	This chemotactic factor attracts monocytes and basophils but not neutrophils or eosinophils and augments monocyte anti-tumor activity. It has been implicated in the pathogenesis of diseases characterized by monocytic infiltrates, like psoriasis, rheumatoid arthritis or atherosclerosis. It may be involved in the recruitment of monocytes into the arterial wall during the disease process of atherosclerosis.
<b>Synonyms:</b>	C-C motif chemokine 2, SCYA2, MCAF, Small-inducible cytokine A2, MCP-1, HC11, HC-11
<b>Note:</b>	Centrifuge vial prior to opening!

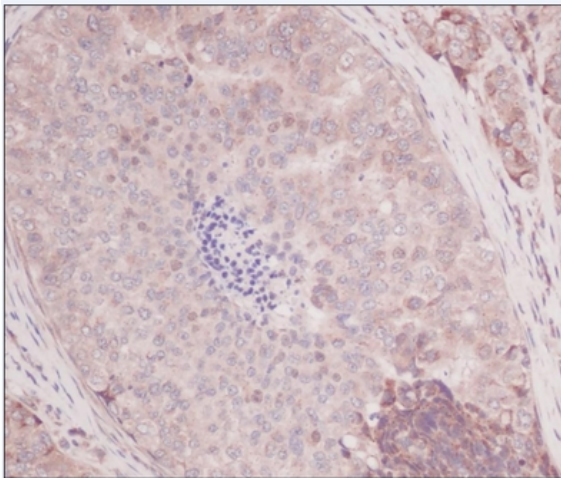
**Product images:**

Figure 1. Formalin-Fixed, Paraffin-Embedded Sections of Human breast invasive ductal carcinoma stained with MCP-1 Antibody Cat.-No [PP1044P] Tissue samples were provided by the Cooperative Human Tissue Network which is funded by the National Cancer Institute.

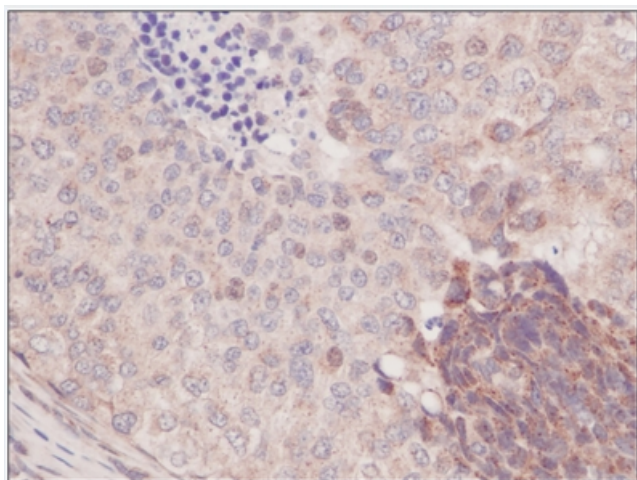


Figure 2. Formalin-Fixed, Paraffin-Embedded Sections of Human breast invasive ductal carcinoma stained with MCP-1 Antibody Cat.-No [PP1044P] Tissue samples were provided by the Cooperative Human Tissue Network which is funded by the National Cancer Institute.