

Product datasheet for **PP1041B1**

Leptin (LEP) Rabbit Polyclonal Antibody

Product data:

Product Type:	Primary Antibodies
Applications:	ELISA, WB
Recommended Dilution:	Direct ELISA: To detect Human Leptin by Direct ELISA (using 100 µl/well antibody solution) a concentration of 0.25-1.0 µg/ml of this antibody is required. This antibody, in conjunction with compatible secondary reagents, allows the detection of at least 0.2-0.4 ng/well of recombinant Human Leptin. Sandwich ELISA: To detect Human Leptin by Sandwich ELISA (using 100 µl/well antibody solution) a concentration of 0.25-1.0 µg/ml of this antibody is required. This biotinylated antibody, in conjunction with Anti-Human Leptin (Cat.-No PP1041P) as a capture antibody, allows the detection of at least 0.2-0.4 ng/well of recombinant hLeptin. Western Blot: To detect Human Leptin by Western Blot analysis this antibody can be used at a concentration of 0.1-0.2 µg/ml. Used in conjunction with compatible secondary reagents the detection limit for recombinant Human Leptin is 1.5-3.0 ng/lane, under either reducing or non-reducing conditions.
Reactivity:	Human
Host:	Rabbit
Clonality:	Polyclonal
Immunogen:	Highly pure (>98%) E.coli derived recombinant Human Leptin (Cat.-No PA094)
Specificity:	This antibody reacts with Human Leptin. Other species not tested.
Formulation:	PBS, pH 7.2 without preservatives Label: Biotin State: Lyophilized (sterile filtered) purified Ig fraction. Label: conjugated
Reconstitution Method:	Restore in sterile PBS containing 0.1% BSA to a concentration of 0.1-1.0 mg/ml. Centrifuge vial prior to opening!
Purification:	Affinity Chromatography
Conjugation:	Biotin



[View online »](#)

Storage: Prior to reconstitution store at 2-8°C.
Following reconstitution store undiluted at 2-8°C for one month or (in aliquots) at -20°C for longer.
Avoid repeated freezing and thawing.

Stability: Shelf life: one year from despatch.

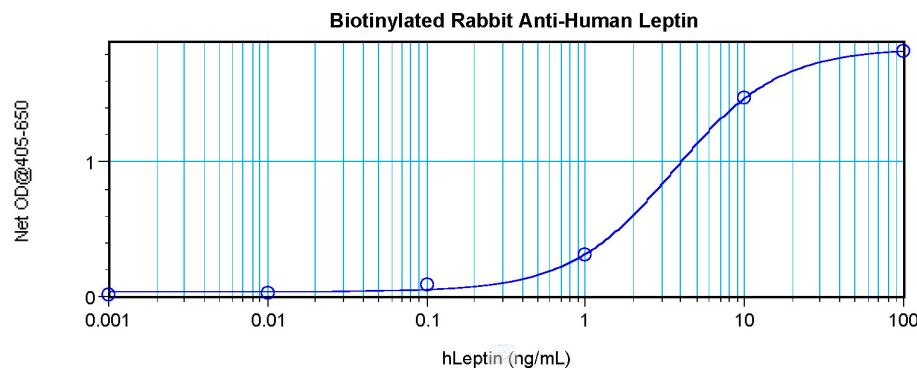
Gene Name: leptin

Database Link: [Entrez Gene 3952 Human P41159](#)

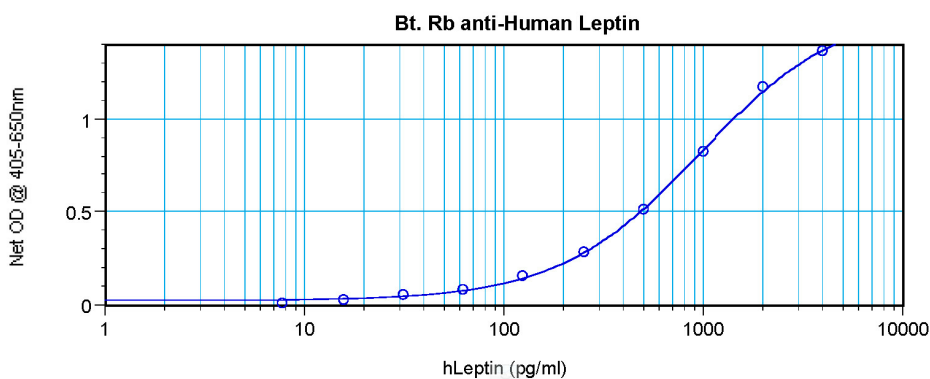
Background: Leptin plays a critical role in the regulation of body weight by inhibiting food intake and stimulating energy expenditure. Defects in Leptin production cause severe hereditary obesity in rodents and humans. In addition to its effects on body weight, leptin has a variety of other functions, including the regulation of hematopoiesis, angiogenesis, wound healing, and the immune and inflammatory response. The Leptin gene is the human homolog of the gene (ob) mutant in the mouse 'obese' phenotype. Defects in the Leptin gene are the cause of profound obesity and type II diabetes.

Synonyms: LEP, OB, OBS, Obesity factor, Obese protein

Product images:



Direct ELISA using Biotin conjugated Leptin Antibody Cat.-No [PP1041B]



Sandwich ELISA using Biotin conjugated Leptin Antibody Cat.-No [PP1041B]