

Product datasheet for **PP1040P1**

KGF (FGF7) Rabbit Polyclonal Antibody

Product data:

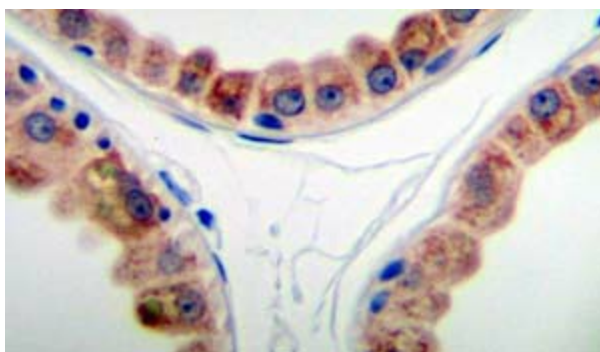
Product Type:	Primary Antibodies
Applications:	ELISA, FN, IHC, WB
Recommended Dilution:	Immunohistochemistry on Paraffin Sections: 0.5 µg/ml overnight at 4°C. This antibody stained formalin-fixed, paraffin-embedded sections of normal Human skin. An HRP-labeled polymer detection system was used with a non-alcohol soluble AEC chromogen and a proteinase K antigen retrieval. Neutralization: To yield one-half maximal inhibition [ND50] of the biological activity of Human KGF (25 ng/ml), a concentration of 0.56-0.85 µg/ml of this antibody is required. Direct ELISA: To detect Human KGF by direct ELISA (using 100 µl/well antibody solution) a concentration of at least 0.5 µg/ml of this antibody is required. This antigen affinity purified antibody, in conjunction with compatible secondary reagents, allows the detection of 0.2-0.4 ng/well of recombinant Human KGF. Sandwich ELISA: To detect Human KGF by sandwich ELISA (using 100 µl/well antibody solution) a concentration of 0.5-2.0 µg/ml of this antibody is required. This antigen affinity purified antibody, in conjunction with Biotinylated Anti-Human KGF (<i>Cat.-No</i> PP1040B) as a detection antibody, allows the detection of at least 0.2-0.4 ng/well of recombinant hKGF. Western blot: To detect Human KGF by Western Blot analysis this antibody can be used at a concentration of 0.1-0.2 µg/ml. Used in conjunction with compatible secondary reagents the detection limit for recombinant Human KGF is 1.5-3.0 ng/lane, under <i>either reducing or non-reducing conditions</i> .
Reactivity:	Human
Host:	Rabbit
Clonality:	Polyclonal
Immunogen:	Highly purified (>98%) E.coli-derived 18.9 kDa recombinant Human FGF-7 (KGF)
Specificity:	This antibody reacts with Human Keratinocyte Growth Factor (KGF). Other species not tested.
Formulation:	PBS, pH 7.2 without preservatives State: Aff - Purified State: Lyophilized (sterile filtered) purified IgG fraction
Reconstitution Method:	Restore in sterile water to a concentration of 0.1-1.0 mg/ml.
Purification:	Affinity Chromatography employing immobilized Human KGF matrix



[View online >](#)

Conjugation:	Unconjugated
Storage:	Store lyophilized at 2-8°C for 6 months or at -20°C long term. After reconstitution store the antibody undiluted at 2-8°C for one month or (in aliquots) at -20°C long term. Avoid repeated freezing and thawing.
Stability:	Shelf life: one year from despatch.
Gene Name:	fibroblast growth factor 7
Database Link:	Entrez Gene 2252 Human P21781
Background:	KGF is a member of the fibroblast growth factor (FGF) family. FGF family members possess broad mitogenic and cell survival activities, and are involved in a variety of biological processes, including embryonic development, cell growth, morphogenesis, tissue repair, tumor growth and invasion. This protein is a potent epithelial cell specific growth factor, whose mitogenic activity is predominantly exhibited in keratinocytes but not in fibroblasts and endothelial cells. Studies of mouse and rat homologs of this gene implicated roles in morphogenesis of epithelium, reepithelialization of wounds, hair development and early lung organogenesis.
Synonyms:	Keratinocyte growth factor, Fibroblast growth factor 7, HBGF7
Note:	Centrifuge vial prior to opening!

Product images:



Immunohistochemistry: This antibody stained formalin-fixed, paraffin-embedded sections of normal human skin.

