

## Product datasheet for **PP1037P2**

### IL17 (IL17A) Rabbit Polyclonal Antibody

#### Product data:

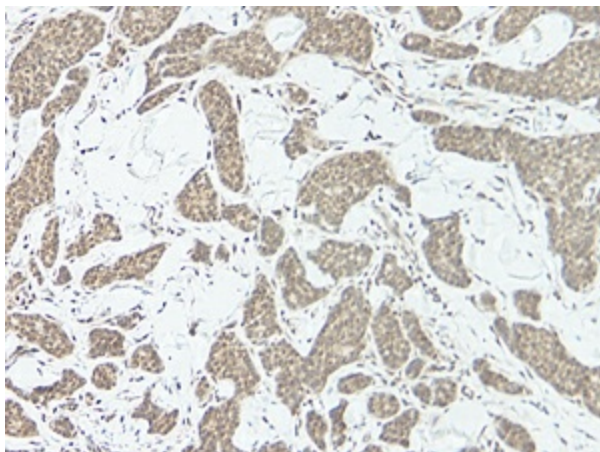
Product Type:	Primary Antibodies
Applications:	ELISA, FN, IHC, WB
Recommended Dilution:	<p><b>Neutralization:</b> To yield one-half maximal inhibition [ND50] of the biological activity of Human IL-17A (50.00 ng/ml), a concentration of 0.9-1.3 µg/ml of previous lots of this antibody is required.</p> <p><b>Immunohistochemistry on Paraffin Sections:</b> 0.25 µg/ml, Overnight at 4°C. This antibody stained sections of Human breast invasive ductal carcinoma. An HRP-labeled polymer detection system was used with a DAB Chromogen. Heat induced antigen retrieval with a pH 6.0 Sodium Citrate buffer is recommended.</p> <p><b>Sandwich ELISA:</b> To detect Human IL-17A by Sandwich ELISA (using 100 µl/well antibody solution) a concentration of 0.5-2.0 µg/ml of this antibody is required. This antigen affinity purified antibody, in conjunction with Biotinylated anti-Human IL-17A (<i>Cat.-No</i> PP1037B1 or PP1037B2) as Detection antibody, allows the detection of 0.2-0.4 ng/well of recombinant Human IL-17A.</p> <p><b>Western Blot:</b> To detect Human IL-17A by Western Blot analysis this antibody can be used at a concentration of 0.1-0.2 µg/ml. Used in conjunction with compatible secondary reagents the detection limit for recombinant Human IL-17A is 1.5-3.0 ng/lane, under either reducing or non-reducing conditions.</p>
Reactivity:	Human
Host:	Rabbit
Clonality:	Polyclonal
Immunogen:	Highly pure (>98%) recombinant hIL-17A (human Interleukin-17A).
Specificity:	This antibody reacts with Human Interleukin-17 (IL-17). Other species not tested.
Formulation:	<p>PBS, pH 7.2 without preservatives.</p> <p>State: Aff - Purified</p> <p>State: Lyophilized (sterile filtered) purified Ig fraction.</p>
Reconstitution Method:	Restore in sterile water to a concentration of 0.1-1.0 mg/ml.
Purification:	Antigen Affinity Chromatography
Conjugation:	Unconjugated



[View online »](#)

<b>Storage:</b>	Store lyophilized at 2-8°C for 6 months or at -20°C long term. After reconstitution store the antibody undiluted at 2-8°C for one month or (in aliquots) at -20°C long term. Avoid repeated freezing and thawing.
<b>Stability:</b>	Shelf life: one year from despatch.
<b>Gene Name:</b>	interleukin 17A
<b>Database Link:</b>	<a href="#">Entrez Gene 3605 Human Q16552</a>
<b>Background:</b>	IL17, also known as CTLA8, is a T cell derived hematopoietic cytokine. It was originally cloned from a T cell hybridoma produced by fusion of a mouse cytotoxic T cell clone and a rat T lymphoma. IL17 exhibits multiple biological activities on a variety of cells including: the induction of IL6, IL8 and GCSF production in fibroblasts; the enhancement of surface expression of ICAM 1 in fibroblasts; activation of NF kappaB and costimulation of T cell proliferation. IL17 is an approximately 16 kDa polypeptide of 136 amino acids. The precursor form of IL17 consists of 155 amino acids. To generate the mature IL17 (136 amino acids), the precursor cleaves a 19 amino acid signal peptide. Human IL17 shows approximately 62.5% amino acid homology to mouse IL17 and 58% amino acid homology to rat IL17.
<b>Synonyms:</b>	IL-17A, IL17, IL-17, CTLA8, CTLA-8
<b>Note:</b>	Centrifuge vial prior to opening!

### Product images:



Immunohistochemistry: This antibody stained formalin-fixed, paraffin-embedded sections of human breast invasive ductal carcinoma. The recommended concentration is 0.25 ug/ml with an overnight incubation at 4°C. Tissue samples were provided by the Cooperative Human Tissue Network, which is funded by the National Cancer Institute.