

Product datasheet for **PP1036P1**

IL16 Rabbit Polyclonal Antibody

Product data:

Product Type:	Primary Antibodies
Applications:	ELISA, FN, WB
Recommended Dilution:	Neutralization: To yield one-half maximal inhibition [ND50] of the biological activity of hIL-16 (4.20 ng/ml), a concentration of 0.07-0.012 µg/ml of this antibody is required. Direct ELISA: To detect Human IL-16 by direct ELISA (using 100µl/well antibody solution) a concentration of at least 0.5 µg/ml of this antibody is required. This antigen affinity purified antibody, in conjunction with compatible secondary reagents, allows the detection of 0.2-0.4 ng/well of recombinant Human IL-16. Sandwich ELISA: To detect Human IL-16 by Sandwich ELISA (using 100 µl/well antibody solution) a concentration of 0.5-2.0 µg/ml of this antibody is required. This antigen affinity purified antibody, in conjunction with Biotin conjugated Anti-Human IL-16 (Cat.-No PP1036B1 or PP1036B2) as a detection antibody, allows the detection of at least 0.2-0.4 ng/well of recombinant hIL-16. Western Blot: To detect Human IL-16 by Western Blot analysis this antibody can be used at a concentration of 0.1-0.2 µg/ml. Used in conjunction with compatible secondary reagents the detection limit for recombinant Human IL-16 is 1.5-3.0 ng/lane, under either reducing or non-reducing conditions.
Reactivity:	Human
Host:	Rabbit
Clonality:	Polyclonal
Immunogen:	Highly pure (>98%) E.coli derived recombinant Human IL-16 (Cat.-No PA089)
Specificity:	Reacts with Human Interleukin-16. Other species not tested.
Formulation:	PBS, pH 7.2 without preservatives State: Aff - Purified State: Lyophilized purified Ig fraction.
Reconstitution Method:	Restore in sterile water to a concentration of 0.1-1.0 mg/ml.
Purification:	Antigen Affinity Chromatography
Conjugation:	Unconjugated



[View online »](#)

Storage: Store lyophilized at 2-8°C for 6 months or at -20°C long term.
After reconstitution store the antibody undiluted at 2-8°C for one month
or (in aliquots) at -20°C long term.
Avoid repeated freezing and thawing.

Stability: Shelf life: one year from despatch.

Gene Name: interleukin 16

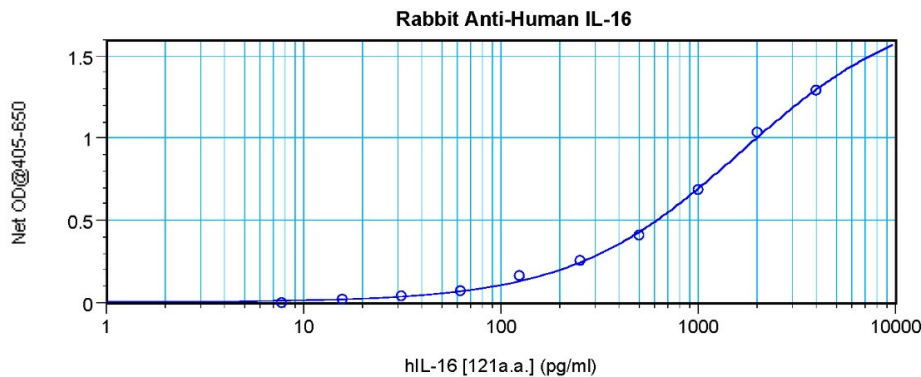
Database Link: [Entrez Gene 3603 Human Q14005](#)

Background: IL16 is a proinflammatory cytokine that is chemotactic for CD4+ T lymphocytes, monocytes, and eosinophils. IL16 is synthesized as a precursor molecule (pro IL16) of approximately 68 kDa and 631 amino acid residues lacking a signal peptide. The sequence and structure of IL16 is conserved across species. In addition to inducing chemotaxis, IL16 upregulates the IL2 receptor and upregulates HLADR expression. It also inhibits T cell receptor (TCR)/CD3 dependent activation, and suppresses HIV1 replication in vitro. Sources of IL16 include epithelial cells, mast cells, T lymphocytes (CD4+ and CD8+), macrophages, synovial fibroblasts, and eosinophils.

Synonyms: IL-16, LCF

Note: Centrifuge vial prior to opening!

Product images:



Sandwich ELISA using Interleukin-16 / IL16
Antibody Cat.-No [PP1036P]