

Product datasheet for **PP1028P2**

IL6 Goat Polyclonal Antibody

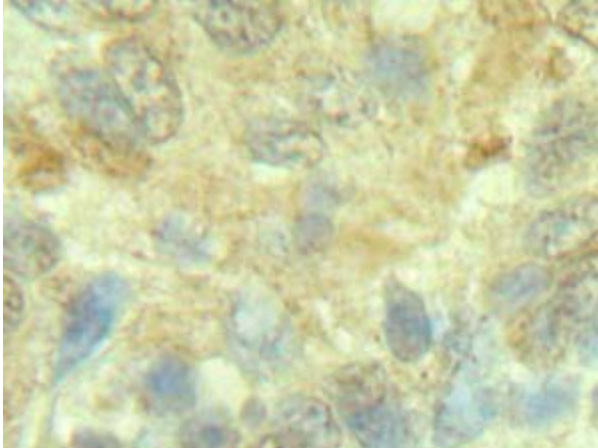
Product data:

Product Type:	Primary Antibodies
Applications:	ELISA, FN, IHC, WB
Recommended Dilution:	Neutralization: To yield one-half maximal inhibition [ND ₅₀] of the biological activity of hIL-6 (5 ng/ml), a concentration of 0.05-0.08 µg/ml of this antibody is required. Indirect ELISA: To detect hIL-6 by indirect ELISA (using 100 µl/well antibody solution) a concentration of 0.5-2.0 µg/ml of this antibody is required. This antigen affinity purified antibody, in conjunction with compatible secondary reagents, allows the detection of at least 0.2-0.4 ng/well of recombinant hIL-6. Sandwich ELISA: To detect hIL-6 by (using 100 µl/well antibody solution) a concentration of 0.5-2.0 µg/ml of this antibody is required. This antigen affinity purified antibody, in conjunction with a biotinylated anti-Human IL-6 as a detection antibody (Cat.-No PP1028B), allows the detection of at least 0.2-0.4 ng/well of recombinant hIL-6. Western Blot: To detect hIL-6 this antibody can be used at a concentration of 0.1-0.2 µg/ml. Used in conjunction with compatible secondary reagents the detection limit for recombinant hIL-6 is 1.5-3.0 ng/lane, under either reducing or non-reducing conditions. Immunohistochemistry on Paraffin Sections: This antibody stained FFPE sections of Human cervical squamous cell carcinoma. <i>Recommended Concentration:</i> 2.5 µg/ml (overnight at 4°C). Use heat induced antigen retrieval with a pH 6.0 sodium citrate buffer. An HRP-labeled polymer detection system was used with a DAB chromogen.
Reactivity:	Human
Host:	Goat
Clonality:	Polyclonal
Immunogen:	Highly pure (> 98%), 20.9 kDa E.coli derived recombinant Human IL-6
Specificity:	This antibody detects Human Interleukin-6. Other species not tested.
Formulation:	PBS, pH 7.2 State: Aff - Purified State: Lyophilized (sterile filtered) purified IgG fraction
Reconstitution Method:	Centrifuge vial prior to opening. Restore in sterile water to a concentration of 0.1-1.0 mg/ml.



[View online »](#)

Purification:	Affinity chromatography employing immobilized Human IL-6 matrix
Conjugation:	Unconjugated
Storage:	Store lyophilized at 2-8°C for 6 months or at -20°C long term. After reconstitution store the antibody undiluted at 2-8°C for one month or (in aliquots) at -20°C long term. Avoid repeated freezing and thawing.
Stability:	Shelf life: one year from despatch.
Gene Name:	interleukin 6
Database Link:	Entrez Gene 3569 Human P05231
Background:	<p>Interleukin 6 (IL6) is a multifunctional 24 kDa protein originally discovered in the medium of RNA stimulated fibroblastoid cells. It is upregulated by IL1, TNF, PDGF, IFN beta, TNF alpha, NGF, IL17 and downregulated by glucocorticoids IL4, TGF beta. IL6 appears to be directly involved in the responses that occur after infection and cellular injury, and it may prove to be as important as IL1 and TNF alpha in regulating the acute phase response. IL6 has also been implicated in regulating adipose mass.</p> <p>IL6 is reported to be produced by fibroblasts, activated T cells, activated monocytes or macrophages and endothelial cells. It acts upon a variety of cells including fibroblasts, myeloid progenitor cells, T cells, B cells and hepatocytes. In addition, IL6 appears to interact with IL2 in the proliferation of T lymphocytes. IL6 potentiates the proliferative effect of IL3 on multipotential hematopoietic progenitors.</p>
Synonyms:	IL-6, Interferon beta-2, IFNB2, B-cell stimulatory factor 2, BSF-2, CDF
Protein Families:	Druggable Genome, Secreted Protein
Protein Pathways:	Cytokine-cytokine receptor interaction, Cytosolic DNA-sensing pathway, Graft-versus-host disease, Hematopoietic cell lineage, Hypertrophic cardiomyopathy (HCM), Jak-STAT signaling pathway, NOD-like receptor signaling pathway, Pathways in cancer, Prion diseases, Toll-like receptor signaling pathway

Product images:

Immunohistochemistry This Interleukin-6 antibody stained formalin-fixed, paraffin-embedded sections of human cervical squamous cell carcinoma. The recommended concentration is 2.5 µg/ml with an overnight incubation at 4 °C. An HRP-labeled polymer detection system was used with a DAB chromogen. The recommended antigen retrieval is heat induced antigen retrieval with a pH 6.0 Sodium Citrate buffer. Tissue samples were provided by the Cooperative Human Tissue Network which is funded by the National Cancer Institute.