

Product datasheet for **PP1027P1**

IL5 Rabbit Polyclonal Antibody

Product data:

Product Type:	Primary Antibodies
Applications:	ELISA, FN, IHC, WB
Recommended Dilution:	Neutralization: To yield one-half maximal inhibition [ND50] of the biological activity of Human IL-5 (0.45 ng/ml), a concentration of 0.05-0.09 µg/ml of this antibody is required. Sandwich ELISA: To detect Human IL-5 by Sandwich ELISA (using 100 µl/well antibody solution) a concentration of at least 0.5-2.0 µg/ml of this antibody is required. This antigen affinity purified antibody, in conjunction with Biotin conjugated antibody (<i>Cat.-No</i> PP1027B) as a detection antibody, allows the detection of 0.2-0.4 ng/well of recombinant Human IL-5. Western Blot: To detect hIL-5 by Western Blot analysis this antibody can be used at a concentration of 0.1-0.2 µg/ml. Used in conjunction with compatible secondary reagents the detection limit for recombinant hIL-5 is 1.5-3.0 ng/lane, under either reducing or non-reducing conditions. Immunohistochemistry on Formalin-Fixed, Paraffin-Embedded Sections: 0.25 µg/ml with an overnight incubation at 4°C. Optimal results for these conditions were achieved without antigen retrieval.
Reactivity:	Human
Host:	Rabbit
Clonality:	Polyclonal
Immunogen:	Highly pure (>98%) E.coli derived recombinant Human IL-5 (<i>Cat.-No</i> PA078)
Specificity:	This antibody reacts with Human Interleukin-5. Other species not tested.
Formulation:	PBS, pH 7.2 without preservatives. State: Aff - Purified State: Lyophilized (sterile filtered) purified Ig fraction
Reconstitution Method:	Restore in sterile water to a concentration of 0.1-1.0 mg/ml.
Purification:	Affinity Chromatography employing immobilized Human IL-5 matrix.
Conjugation:	Unconjugated
Storage:	Store lyophilized at 2-8°C for 6 months or at -20°C long term. After reconstitution store the antibody undiluted at 2-8°C for one month or (in aliquots) at -20°C long term. Avoid repeated freezing and thawing.



[View online »](#)

Stability: Shelf life: one year from despatch.

Gene Name: interleukin 5

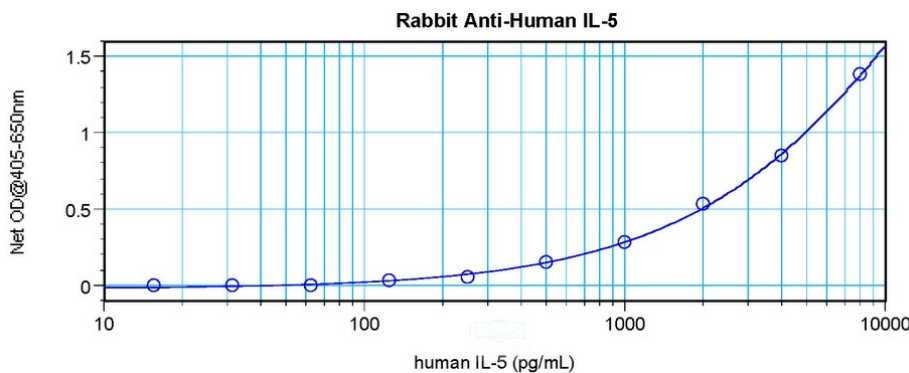
Database Link: [Entrez Gene 3567 Human P05113](#)

Background: Interleukin 5 (IL5) is a cytokine produced primarily by activated T lymphocytes. It exists as an antiparallel disulfide linked homodimeric glycoprotein with 115 amino acid residues in each chain. Known also as EDF (eosinophil differentiating factor), functions predominantly as an eosinophilopoietic factor. Analysis of its crystal structure reveals a novel two domain structure, with each domain showing significant homology to the cytokine fold in GMCSF, MCSF, IL2, IL4 and growth hormone. Human and mouse IL5 have 70% amino acid sequence homology.

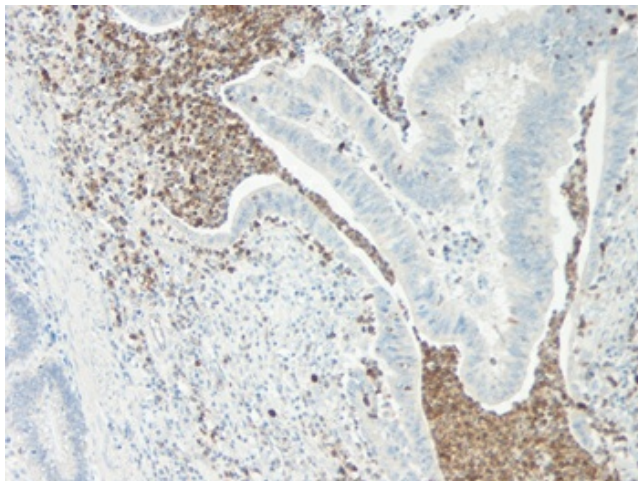
Synonyms: IL-5, B-cell differentiation factor I, Eosinophil differentiation factor, T-cell replacing factor, TRF

Note: Centrifuge vial prior to opening!

Product images:



Sandwich ELISA using Interleukin-5 / IL5 Antibody Cat.-No [PP1027P].



Immunohistochemistry: The Interleukin-5 antibody stained formalin-fixed, paraffin-embedded sections of human colon/rectum adenocarcinoma. The recommended concentration is 0.25ug/ml with an overnight incubation at 4°C. An HRP-labeled polymer detection system was used with a DAB chromogen. Optimal results for these conditions were achieved without antigen retrieval. Tissue samples were provided by the Cooperative Human Tissue Network, which is funded by the National Cancer Institute.