

Product datasheet for **PP1024P2**

IL2 Rabbit Polyclonal Antibody

Product data:

Product Type: Primary Antibodies

Applications: ELISA, FN, IHC, WB

Recommended Dilution: **Neutralisation**

To yield one-half maximal inhibition [ND50] of the biological activity of Human IL-2 (2.0 ng/ml), a concentration of 0.12-0.16 µg/ml of this antibody is required.

ELISA

Indirect:

To detect hIL-2 by indirect ELISA (using 100 µl/well antibody solution) a concentration of 0.5-2.0 µg/ml of this antibody is required. This antigen affinity purified antibody, in conjunction with compatible secondary reagents, allows the detection of at least 0.2-0.4 ng/well of recombinant Human IL-2.

Sandwich: To detect hIL-2 by sandwich ELISA (using 100 µl/well antibody solution) a concentration of 0.5-2.0 µg/ml of this antibody is required. This antigen affinity purified antibody, in conjunction with Biotinylated Anti-Human IL-2 (PP1024B1 or PP1024B2) as a detection antibody, allows the detection of at least 0.2-0.4 ng/well of recombinant hIL-2.

Western blot

To detect hIL-2 by Western Blot analysis this antibody can be used at a concentration of 0.1-0.2 µg/ml. Used in conjunction with compatible secondary reagents the detection limit for recombinant Human IL-2 is 1.5-3.0 ng/lane, under either reducing or non-reducing conditions.

Immunohistochemistry

Formalin-fixed, paraffin-embedded sections. Recommended concentration: 0.125 µg/mL-0.250 µg/mL with an overnight incubation at 4°C. Heat induced antigen retrieval with a pH 6.0 sodium citrate buffer is recommended.

Reactivity: Human

Host: Rabbit

Clonality: Polyclonal

Immunogen: Highly purified (>98%) recombinant human Interleukin 2.

Specificity: This antibody reacts with Human Interleukin 2 (IL-2)

Formulation: PBS, pH 7.2 without preservatives.

State: Aff - Purified

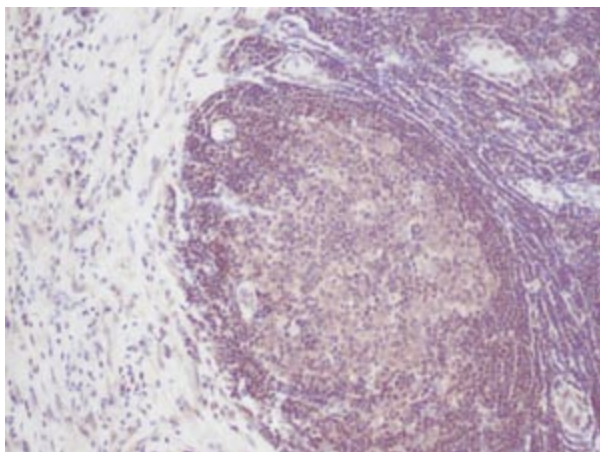
State: Lyophilized (Sterile filtered) purified Ig fraction.



[View online »](#)

Reconstitution Method:	Restore in sterile water to a concentration of 0.1-1.0 mg/ml.
Purification:	Affinity Chromatography.
Conjugation:	Unconjugated
Storage:	Store the antibody prior to reconstitution at -20°C. Following reconstitution the antibody can be stored at 2-8°C for one month or at -20°C for longer. Avoid repeated freezing and thawing.
Stability:	Shelf life: One year from despatch.
Gene Name:	interleukin 2
Database Link:	Entrez Gene 3558 Human P60568
Background:	Human interleukin 2 (IL2) is a secreted cytokine that is important for the proliferation of T and B lymphocytes. The receptor of this cytokine is a heterotrimeric protein complex whose gamma chain is also shared by interleukin 4 (IL4) and interleukin 7 (IL7). The expression of this gene in mature thymocytes is monoallelic, which represents an unusual regulatory mode for controlling the precise expression of a single gene. The targeted disruption of a similar gene in mice leads to ulcerative colitis like disease, which suggests an essential role of this gene in the immune response to antigenic stimuli. IL2 has been shown to have antitumor effects in some studies. This is probably mediated by cytotoxic effector cells.
Synonyms:	IL-2, TCGF
Note:	Centrifuge vial prior to opening!

Product images:



Immunohistochemistry. This Interleukin-2 antibody stained formalin-fixed, paraffin-embedded sections of human breast invasive ductal carcinoma. The recommended concentration is 0.125 ug/mL-0.250 ug/mL with an overnight incubation at 4°C. An HRP-labeled polymer detection system was used with a DAB chromogen. Heat induced antigen retrieval with a pH 6.0 sodium citrate buffer is recommended. Tissue samples were provided by the Cooperative Human Tissue Network, which is funded by the National Cancer Institute.

