

## Product datasheet for **PP1021P1**

### IGF2 Rabbit Polyclonal Antibody

#### Product data:

Product Type: Primary Antibodies

Applications: ELISA, FN, IHC, WB

Recommended Dilution: **Immunohistochemistry**

This antibody stained formalin-fixed, paraffin-embedded sections of normal human placenta. The recommended concentration ranges from 0.5 µg/ml-5.0µg/ml. An HRP-labeled polymer detection system was used with DAB chromogen. Recommended antigen retrievals are heat induced antigen retrieval with a pH 6.0 Sodium Citrate buffer or enzyme induced antigen retrieval with Proteinase K.

#### Neutralization

To yield one-half maximal inhibition [ND50] of the biological activity of hIGF-II (10 ng/ml), a concentration of 3.1 - 4.6 µg/ml of this antibody is required.

#### ELISA

Indirect: To detect hIGF-II by indirect ELISA (using 100 µl/well antibody solution) a concentration of 0.5 - 2.0 µg/ml is required. In conjunction with compatible secondary reagents, it allows the detection of at least 0.2 - 0.4 ng/well of recombinant hIGF-II.

Sandwich: To detect hIGF-II by sandwich ELISA (using 100 µl/well antibody solution) a concentration of 0.5 - 2.0 µg/ml is required. In conjunction with Biotinylated Anti-Human IGF-II as a detection antibody, it allows the detection of at least 0.2 - 0.4 ng/well of recombinant hIGF-II.

#### Western Blot

To detect hIGF-II by Western Blot analysis this antibody can be used at a concentration of 0.1-0.2 µg/ml. Used in conjunction with compatible secondary reagents the detection limit for recombinant hIGF-II is 1.5-3.0 ng/lane, under either reducing or non-reducing conditions.

Reactivity: Human

Host: Rabbit

Clonality: Polyclonal

Immunogen: Highly pure (>98%) recombinant human IGF-II.

Formulation: PBS, pH 7.2 without preservatives

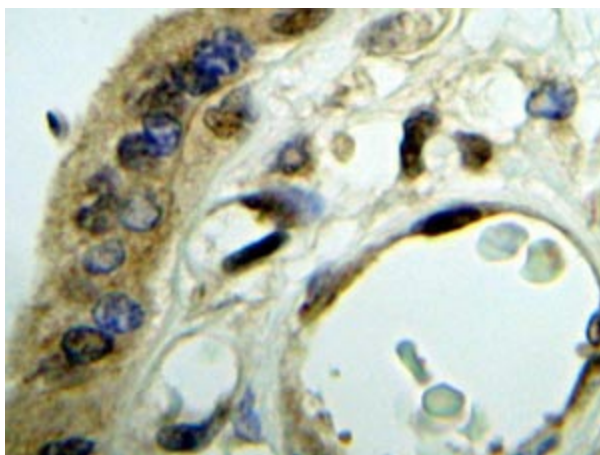
State: Aff - Purified

State: Lyophilized, sterile filtered Ig fraction



[View online »](#)

<b>Reconstitution Method:</b>	Centrifuge vial prior to opening. Reconstitute in sterile water to a concentration of 0.1-1.0 mg/ml.
<b>Purification:</b>	Affinity chromatography employing immobilized hhIGF-II matrix
<b>Conjugation:</b>	Unconjugated
<b>Storage:</b>	Store lyophilized at 2-8°C for 6 months or at -20°C long term. After reconstitution store the antibody undiluted at 2-8°C for one month or (in aliquots) at -20°C long term. Avoid repeated freezing and thawing.
<b>Stability:</b>	Shelf life: one year from despatch.
<b>Gene Name:</b>	insulin like growth factor 2
<b>Database Link:</b>	<a href="#">Entrez Gene 3481 Human P01344</a>
<b>Background:</b>	The IGF2 gene encodes a member of the insulin family of polypeptide growth factors that is involved in development and growth. It is expressed only from the paternally inherited allele and is an imprinted gene which is a candidate gene for eating disorders. There is a read-through, INS-IGF2, which aligns to this gene at the 3' region and to the upstream INS gene at the 5' region. Two alternatively spliced transcript variants encoding the same protein have been found for this gene. Insulin Like Growth Factor-2 (IGF-2) is a polypeptide growth factor, which stimulates the proliferation of a wide range of cell types.
<b>Synonyms:</b>	IGF-II, Somatomedin-A

**Product images:**

This antibody stained formalin-fixed, paraffin-embedded sections of normal human placenta.

