

Product datasheet for **PP1020P1**

IGF1 Rabbit Polyclonal Antibody

Product data:

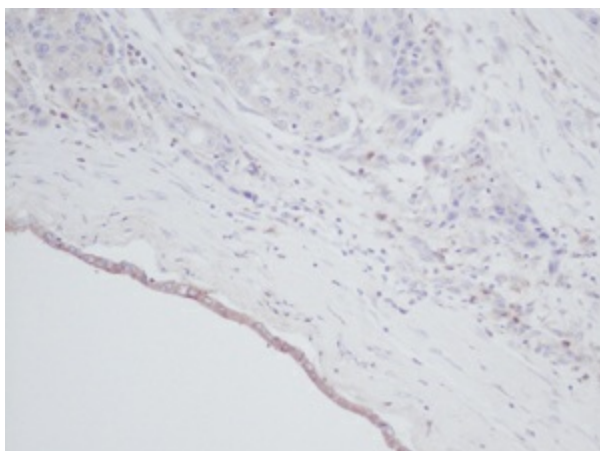
Product Type:	Primary Antibodies
Applications:	ELISA, FN, IHC, WB
Recommended Dilution:	<p>Immunohistochemistry: This antibody stained formalin-fixed, paraffin-embedded sections of human breast invasive ductal carcinoma. The recommended concentration is 0.50 µg/ml with an overnight incubation at 4 °C. An HRP-labeled polymer detection system was used with a DAB chromogen. Optimal results for these conditions were achieved without antigen retrieval.</p> <p>Neutralization: To yield one-half maximal inhibition [ND50] of the biological activity of hIGF-1 (5.0 ng/ml), a concentration of 0.67 - 1.0 µg/ml of this antibody is required.</p> <p>ELISA: To detect hIGF-1 by ELISA (using 100 µl/well antibody solution) a concentration of 0.5 - 2.0 µg/ml of this antibody is required. This allows the detection of 0.2 - 0.4 ng/well of recombinant hIGF-1.</p> <p>Western blot: 0.1 - 0.2 µg/ml. The detection limit for recombinant hIGF-1 is 1.5 - 3.0 ng/lane, under either reducing or non-reducing conditions.</p>
Reactivity:	Human
Host:	Rabbit
Clonality:	Polyclonal
Immunogen:	Highly pure (>98%) recombinant hIGF-1 (human Insulin Like Growth Factor-1)
Specificity:	This antibody detects Insulin Like Growth Factor-1.
Formulation:	<p>PBS, pH 7.2 without preservatives.</p> <p>State: Aff - Purified</p> <p>State: Lyophilized (sterile filtered) purified Ig fraction</p>
Reconstitution Method:	Centrifuge vial prior to opening. Restore in sterile water to a concentration of 0.1 - 1.0 mg/ml.
Purification:	Affinity chromatography employing immobilized hIGF-1 matrix
Conjugation:	Unconjugated
Storage:	<p>Store lyophilized at 2-8°C for 6 months or at -20°C long term.</p> <p>After reconstitution store the antibody undiluted at 2-8°C for one month or (in aliquots) at -20°C long term.</p> <p>Avoid repeated freezing and thawing.</p>



[View online »](#)

Stability:	Shelf life: one year from despatch.
Gene Name:	insulin like growth factor 1
Database Link:	Entrez Gene 3479 Human P05019
Background:	Insulin is a pancreatic hormone that regulates glucose uptake and the synthesis of protein and fat. The insulin like growth factors, isolated from plasma, are structurally and functionally related to insulin but have a much higher growth promoting activity. IGF1 (Insulin Like Growth Factor I) is a polypeptide growth factor, which stimulates the proliferation of a wide range of cell types including muscle, bone, and cartilage tissue. IGF1 functions as an autocrine regulator of growth.
Synonyms:	IGF-I, Somatomedin-C, Mechano growth factor, MGF, IBP1
Protein Families:	Druggable Genome, ES Cell Differentiation/IPS, Secreted Protein
Protein Pathways:	Dilated cardiomyopathy, Focal adhesion, Glioma, Hypertrophic cardiomyopathy (HCM), Long-term depression, Melanoma, mTOR signaling pathway, Oocyte meiosis, p53 signaling pathway, Pathways in cancer, Progesterone-mediated oocyte maturation, Prostate cancer

Product images:



Immunohistochemistry: This antibody stained formalin-fixed, paraffin-embedded sections of human breast invasive ductal carcinoma. Tissue samples were provided by the Cooperative Human Tissue Network, which is funded by the National Cancer Institute.

