

## Product datasheet for **PP1019P1**

### Interferon gamma (IFNG) Rabbit Polyclonal Antibody

#### Product data:

|                        |  |
|------------------------|--|
| Product Type:          | Primary Antibodies   |
| Applications:          | ELISA, FN, IHC, WB   |
| Recommended Dilution:  | <p><b>Neutralization:</b> To yield one-half maximal inhibition [ND50] of the biological activity of h-IFN-gamma (10 ng/ml), a concentration of 0.13-0.20 µg/ml of this antibody is required.</p> <p><b>Sandwich ELISA:</b> To detect Human IFN-gamma by Sandwich ELISA (using 100 µl/well antibody solution) a concentration of 0.5-2.0 µg/ml of this antibody is required. This antigen affinity purified antibody, in conjunction with Biotin conjugated IFN-gamma antibody (<i>Cat.-No</i> PP1019B1 or PP1019B2) as detection antibody allows the detection of 0.2-0.4 ng/well of recombinant Human IFN-gamma.</p> <p><b>Western blot:</b> To detect Human IFN-gamma by Western Blot analysis this antibody can be used at a concentration of 0.1-0.2 µg/ml. Used in conjunction with compatible secondary reagents the detection limit for recombinant Human IFN-gamma is 1.5-3.0 ng/lane, under either reducing or non-reducing conditions.</p> <p><b>Immunohistochemistry:</b> Formalin-fixed, paraffin-embedded sections. The recommended concentration is 0.5-0.25 µg/ml with an overnight incubation at 4°C. Heat induced antigen retrieval with a pH 6.0 sodium citrate buffer is recommended.</p> |
| Reactivity:            | Human  |
| Host:                  | Rabbit   |
| Clonality:             | Polyclonal   |
| Immunogen:             | Highly purified (>98%) E.coli derived recombinant Human Interferon gamma ( <i>Cat.-No</i> PA070)   |
| Specificity:           | This antibody reacts with Human Interferon gamma (hIFN-gamma).<br>Other species not tested.  |
| Formulation:           | PBS, pH 7.2 without preservatives<br>State: Aff - Purified<br>State: Lyophilized (sterile filtered) purified Ig fraction.  |
| Reconstitution Method: | Restore in sterile water to a concentration of 0.1-1.0 mg/ml.  |
| Purification:          | Affinity Chromatography using immobilized Human IFN-gamma matrix   |
| Conjugation:           | Unconjugated   |



[View online »](#)

**Storage:** Store lyophilized at 2-8°C for 6 months or at -20°C long term.  
After reconstitution store the antibody undiluted at 2-8°C for one month  
or (in aliquots) at -20°C long term.  
Avoid repeated freezing and thawing.

**Stability:** Shelf life: one year from despatch.

**Gene Name:** interferon, gamma

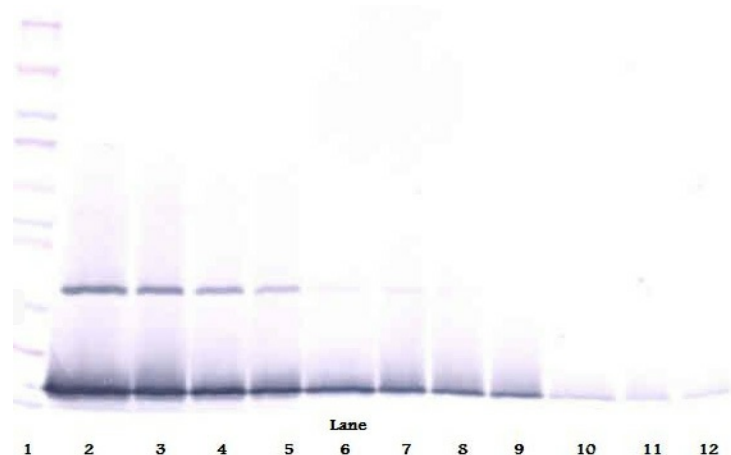
**Database Link:** [Entrez Gene 3458 Human P01579](#)

**Background:** Interferon gamma is mainly produced by T lymphocytes and NK cells. It is a pleiotropic cytokine involved in the regulation of nearly all phases of immune and inflammatory responses, including the activation, growth and differentiation of T cell, B cells, macrophages, NK cells and other cell types such as endothelial cells and fibroblasts. It has weak antiviral and antiproliferative activity, and potentiates the antiviral and anti tumor effects of IFN alpha / beta (type I interferon). It is upregulated by IL2, FGF basic, EGF and downregulated by vitamin D3 or DMN. Labile at pH 2.

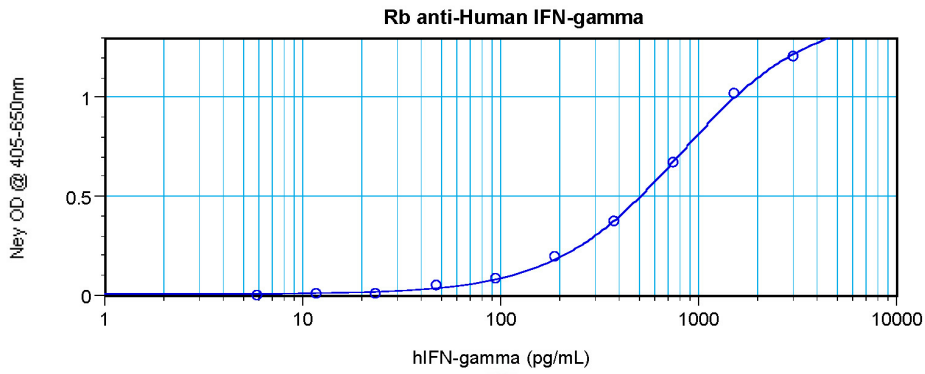
**Synonyms:** IFN-gamma, gamma IFN

**Note:** Centrifuge vial prior to opening!

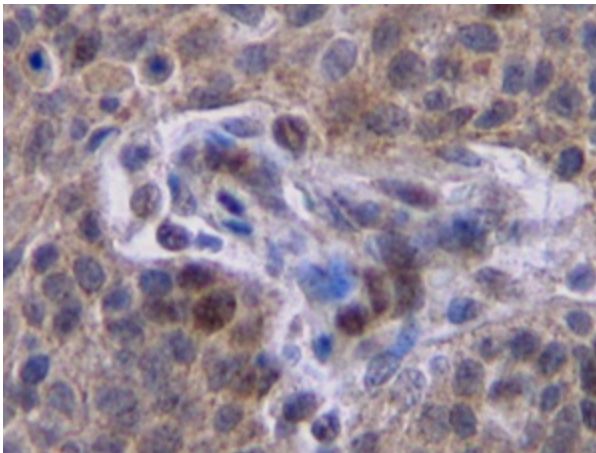
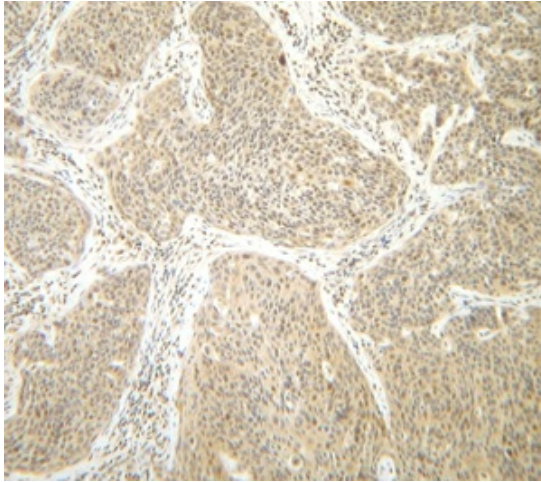
### Product images:



Western Blot unreduced using IFNG / Interferon gamma Antibody Cat.-No [PP1019P].



Sandwich ELISA using IFNG / Interferon gamma Antibody Cat.-No [PP1019P].



**Immunohistochemistry** The Interferon gamma antibody stained formalin-fixed, paraffin-embedded sections of human cervical squamous cell carcinoma. The recommended concentration is 0.5 ug/ml-0.25ug/ml with an overnight incubation at 4°C. An HRP-labeled polymer detection system was used with a DAB chromogen. Heat induced antigen retrieval with a pH 6.0 sodium citrate buffer is recommended. Tissue samples were provided by the Cooperative Human Tissue Network, which is funded by the National Cancer Institute.