

## Product datasheet for **PP1015P1**

### CCL14 Rabbit Polyclonal Antibody

#### Product data:

Product Type:	Primary Antibodies
Applications:	ELISA, FN, IHC, WB
Recommended Dilution:	<b>Neutralization.</b> <b>Sandwich ELISA:</b> To detect hHCC-1 by sandwich ELISA (using 100 µl/well antibody solution) a concentration of 0.5 - 2.0 µg/ml of this antibody is required. This antigen affinity purified antibody, in conjunction with compatible secondary reagent, allows the detection of at least 0.2 - 0.4 ng/well of recombinant hHCC-1. <b>Western blot:</b> To detect hHCC-1 by Western Blot analysis this antibody can be used at a concentration of 0.1-0.2 µg/ml. Used in conjunction with compatible secondary reagents the detection limit for recombinant hHCC-1 is 1.5-3.0 ng/lane, under either reducing or non-reducing conditions. <b>Immunohistochemistry on paraffin sections:</b> 1.5 mg/ml with an overnight incubation at 4°C. Proteinase K antigen retrieval is recommended.
Reactivity:	Human
Host:	Rabbit
Clonality:	Polyclonal
Immunogen:	<i>E.coli</i> derived recombinant Human HCC-1
Specificity:	This antibody reacts with Human Hemofiltrate CC Chemokine 1 (HCC-1).
Formulation:	PBS, pH 7.2 without preservatives. State: Azide Free State: Lyophilized purified Ig fraction.
Reconstitution Method:	Restore in sterile water to a concentration of 0.1-1.0 mg/ml.
Purification:	Affinity chromatography.
Conjugation:	Unconjugated
Storage:	Store lyophilized at 2-8°C for 1 months or at -20°C long term. After reconstitution store the antibody undiluted at 2-8°C for one month or (in aliquots) at -20°C long term. Avoid repeated freezing and thawing.
Stability:	Shelf life: one year from despatch.



[View online »](#)

**Predicted Protein Size:** 150 kDa

**Gene Name:** C-C motif chemokine ligand 14

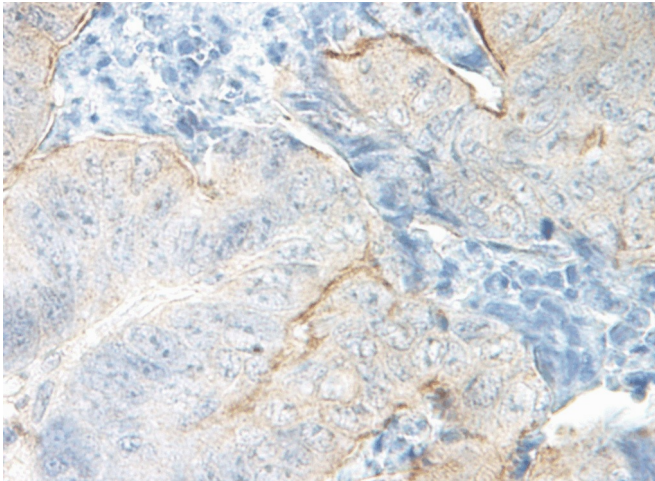
**Database Link:** [Entrez Gene 6358 Human Q16627](#)

**Background:** The CC cytokines are secreted proteins characterized by two adjacent cysteines. The cytokine encoded by this gene induces changes in intracellular calcium concentration and enzyme release in monocytes. This gene expresses both monocistronic and bicistronic transcripts. Bicistronic transcripts include the upstream cytokine gene CCL15. In addition, CCL14 undergoes alternative splicing in the bicistronic transcripts; it is unknown if its monocistronic transcript is also subject to alternative splicing.

**Synonyms:** C-C motif chemokine 14, Small-inducible cytokine A14, Chemokine CC-1/CC-3, HCC-1/HCC-3, NCC-2, SCYA14

**Note:** Centrifuge vial prior to opening!

### Product images:



This antibody stained formalin-fixed, paraffin-embedded sections of human colon/rectum adenocarcinoma. The recommended concentration is 1.5 mg/ml with an overnight incubation at 4°C. An HRP-labeled polymer detection system was used with a DAB chromogen. Proteinase K antigen retrieval is recommended. Optimal concentrations and conditions may vary.