

## Product datasheet for **PP1014P2**

### GRO gamma (CXCL3) Rabbit Polyclonal Antibody

#### Product data:

**Product Type:** Primary Antibodies

**Applications:** ELISA, FN, IHC, WB

**Recommended Dilution:** **Neutralization:** To yield one-half maximal inhibition [ND50] of the biological activity of hGRO-gamma (100 ng/ml), a concentration of 1.0-2.0 µg/ml of this antibody is required.  
**Indirect ELISA:** To detect hGRO-gamma by indirect ELISA (using 100 µl/well antibody solution) a concentration of 0.5-2.0 µg/ml of this antibody is required. This antigen affinity purified antibody, in conjunction with compatible secondary reagents, allows the detection of at least 0.2-0.4 ng/well of recombinant hGRO-gamma.

**Sandwich ELISA:** To detect hGRO-gamma by sandwich ELISA (using 100 µl/well antibody solution) a concentration of 0.5-2.0 µg/ml of this antibody is required. This antigen affinity purified antibody, in conjunction with Biotinylated Anti-Human GRO-gamma (Cat.-No PP1014B1 or PP1014B2) as a detection antibody, allows the detection of at least 0.2-0.4 ng/well of recombinant hGRO-gamma.

**Western Blot:** To detect hGRO-gamma by Western Blot analysis this antibody can be used at a concentration of 0.1-0.2 µg/ml. Used in conjunction with compatible secondary reagents the detection limit for recombinant hGRO-gamma is 1.5-3.0 ng/lane, under either reducing or non-reducing conditions.

**Immunohistochemistry on Formalin-Fixed Paraffin-Embedded Sections:** 0.7-0.5 µg/ml with an overnight incubation at 4°C. An HRP-labeled polymer detection system was used with a DAB chromogen. Heat induced antigen retrieval with a pH 6.0 Sodium Citrate buffer is recommended.

*Positive Control:* Human Colon/Rectum Adenocarcinoma.

**Reactivity:** Human

**Host:** Rabbit

**Clonality:** Polyclonal

**Immunogen:** Highly pure (>98%) E.coli derived recombinant Human GRO-gamma (Cat.-No PA064)

**Specificity:** Human Growth Related Oncoprotein g (hGRO gamma)

**Formulation:** PBS, pH 7.2 without preservatives

State: Aff - Purified

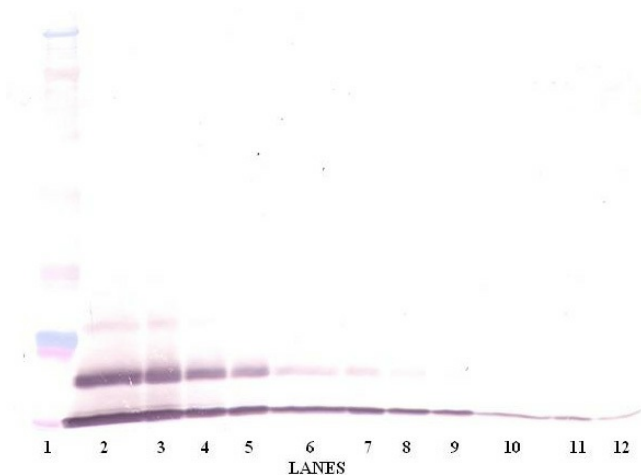
State: Lyophilized (Sterile filtered) purified Ig fraction

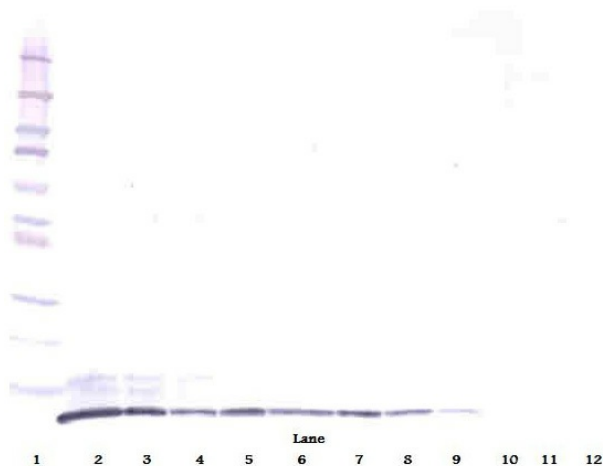
**Reconstitution Method:** Restore in sterile water to a concentration of 0.1-1.0 mg/ml.



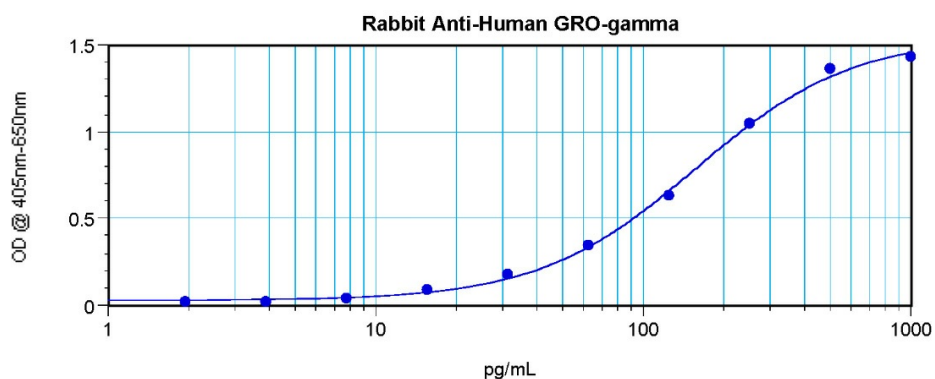
[View online »](#)

<b>Purification:</b>	Affinity Chromatography using immobilized Human GRO- $\gamma$ matrix
<b>Conjugation:</b>	Unconjugated
<b>Storage:</b>	Store lyophilized at 2-8°C for 6 months or at -20°C long term. After reconstitution store the antibody undiluted at 2-8°C for one month or (in aliquots) at -20°C long term. Avoid repeated freezing and thawing.
<b>Stability:</b>	Shelf life: one year from despatch.
<b>Gene Name:</b>	C-X-C motif chemokine ligand 3
<b>Database Link:</b>	<a href="#">Entrez Gene 2921 Human P19876</a>
<b>Background:</b>	Growth Regulated Protein gamma (GRO gamma) is a cytokine that may play a role in inflammation and affects endothelial cells in an autocrine fashion. It belongs to the intercrine alpha family (small cytokine c-x-c) (chemokine cxc).
<b>Synonyms:</b>	C-X-C motif chemokine 3, GRO-gamma, GRO3, GROG, SCYB3, MIP2-beta
<b>Note:</b>	Centrifuge vial prior to opening!

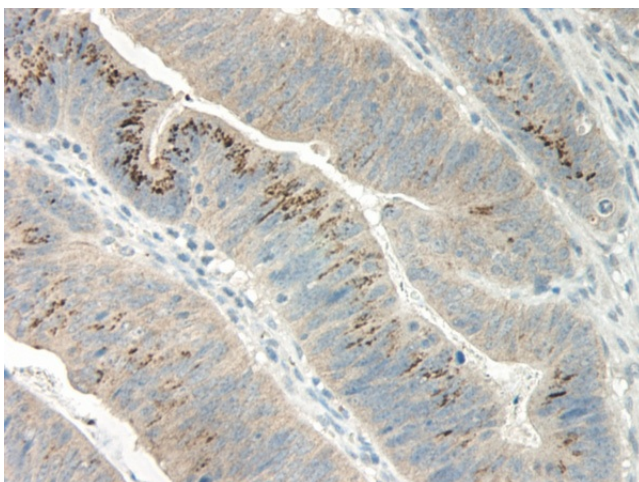
**Product images:**



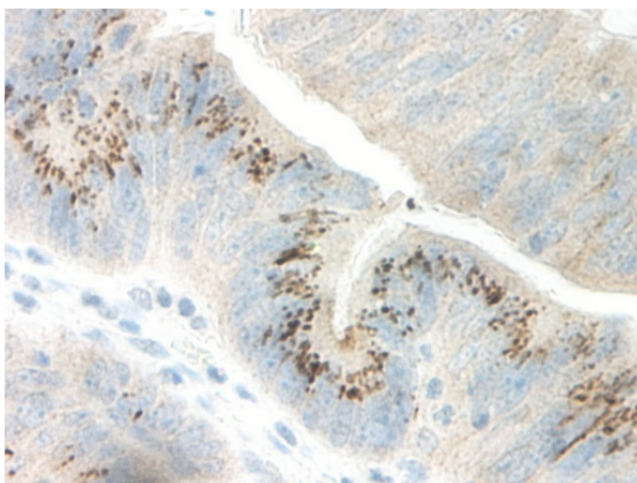
Western Blot (Reduced) CXCL3 / MIP2B Antibody  
Cat.-No [PP1014P]



Sandwich ELISA using CXCL3 / MIP2B Antibody  
Cat.-No [PP1014P]



Formalin-Fixed, Paraffin-Embedded Human sections of colon/rectum adenocarcinoma stained with CXCL3 / MIP2B Antibody Cat.-No [PP1014P]



Formalin-Fixed, Paraffin-Embedded Human sections of colon/rectum adenocarcinoma stained with CXCL3 / MIP2B Antibody Cat.-No [PP1014P]