

Product datasheet for **PP1014P1**

GRO gamma (CXCL3) Rabbit Polyclonal Antibody

Product data:

Product Type: Primary Antibodies

Applications: ELISA, FN, IHC, WB

Recommended Dilution: **Neutralization:** To yield one-half maximal inhibition [ND50] of the biological activity of hGRO-gamma (100 ng/ml), a concentration of 1.0-2.0 µg/ml of this antibody is required.
Indirect ELISA: To detect hGRO-gamma by indirect ELISA (using 100 µl/well antibody solution) a concentration of 0.5-2.0 µg/ml of this antibody is required. This antigen affinity purified antibody, in conjunction with compatible secondary reagents, allows the detection of at least 0.2-0.4 ng/well of recombinant hGRO-gamma.

Sandwich ELISA: To detect hGRO-gamma by sandwich ELISA (using 100 µl/well antibody solution) a concentration of 0.5-2.0 µg/ml of this antibody is required. This antigen affinity purified antibody, in conjunction with Biotinylated Anti-Human GRO-gamma (Cat.-No PP1014B1 or PP1014B2) as a detection antibody, allows the detection of at least 0.2-0.4 ng/well of recombinant hGRO-gamma.

Western Blot: To detect hGRO-gamma by Western Blot analysis this antibody can be used at a concentration of 0.1-0.2 µg/ml. Used in conjunction with compatible secondary reagents the detection limit for recombinant hGRO-gamma is 1.5-3.0 ng/lane, under either reducing or non-reducing conditions.

Immunohistochemistry on Formalin-Fixed Paraffin-Embedded Sections: 0.7-0.5 µg/ml with an overnight incubation at 4°C. An HRP-labeled polymer detection system was used with a DAB chromogen. Heat induced antigen retrieval with a pH 6.0 Sodium Citrate buffer is recommended.

Positive Control: Human Colon/Rectum Adenocarcinoma.

Reactivity: Human

Host: Rabbit

Clonality: Polyclonal

Immunogen: Highly pure (>98%) E.coli derived recombinant Human GRO-gamma (Cat.-No PA064)

Specificity: Human Growth Related Oncoprotein g (hGRO gamma)

Formulation: PBS, pH 7.2 without preservatives

State: Aff - Purified

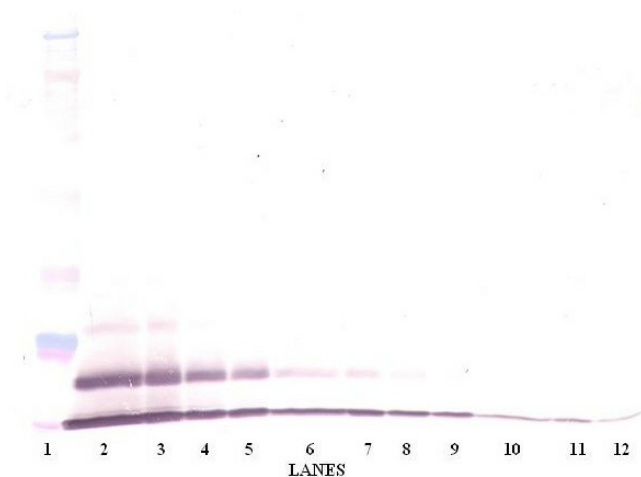
State: Lyophilized (Sterile filtered) purified Ig fraction

Reconstitution Method: Restore in sterile water to a concentration of 0.1-1.0 mg/ml.

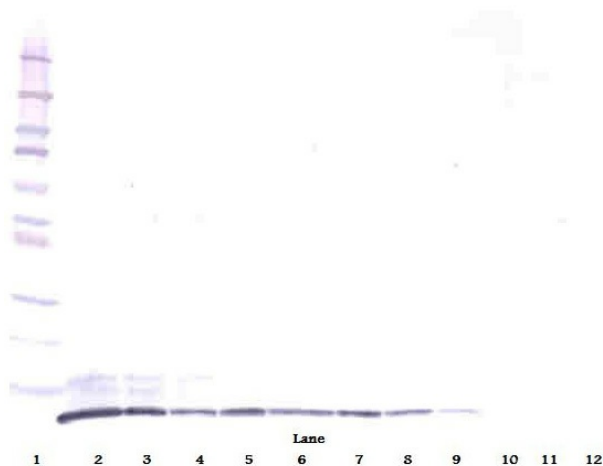


[View online >](#)

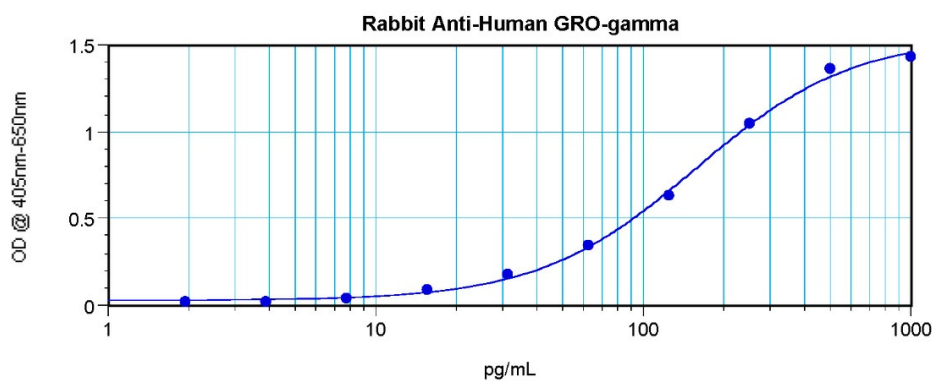
Purification:	Affinity Chromatography using immobilized Human GRO- γ matrix
Conjugation:	Unconjugated
Storage:	Store lyophilized at 2-8°C for 6 months or at -20°C long term. After reconstitution store the antibody undiluted at 2-8°C for one month or (in aliquots) at -20°C long term. Avoid repeated freezing and thawing.
Stability:	Shelf life: one year from despatch.
Gene Name:	C-X-C motif chemokine ligand 3
Database Link:	Entrez Gene 2921 Human P19876
Background:	Growth Regulated Protein gamma (GRO gamma) is a cytokine that may play a role in inflammation and affects endothelial cells in an autocrine fashion. It belongs to the intercrine alpha family (small cytokine c-x-c) (chemokine cxc).
Synonyms:	C-X-C motif chemokine 3, GRO-gamma, GRO3, GROG, SCYB3, MIP2-beta
Note:	Centrifuge vial prior to opening!

Product images:

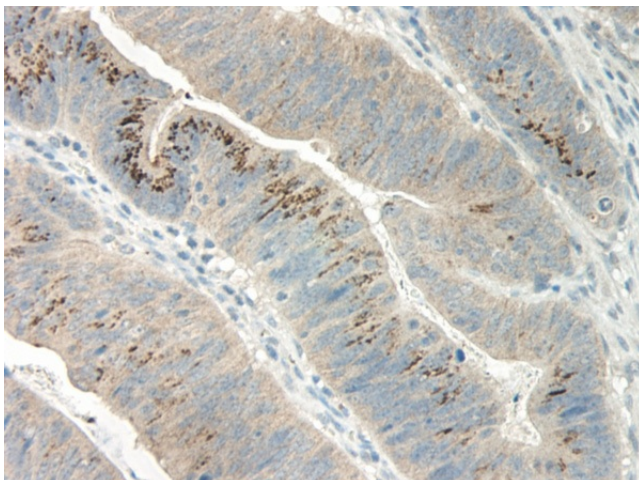
Western Blot (Unreduced) CXCL3 / MIP2B
Antibody Cat.-No [PP1014P]



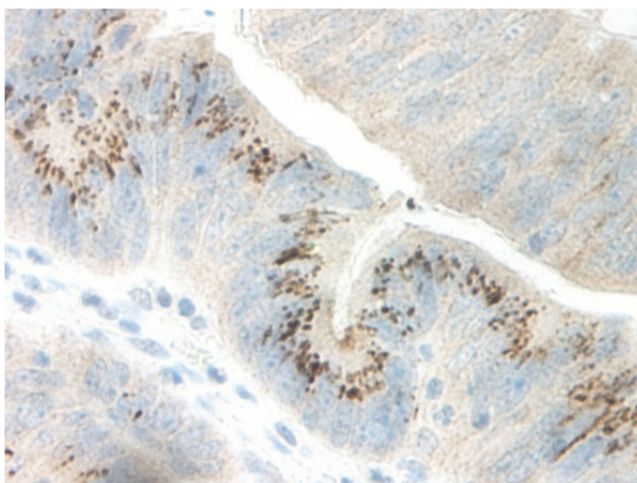
Western Blot (Reduced) CXCL3 / MIP2B Antibody
Cat.-No [PP1014P]



Sandwich ELISA using CXCL3 / MIP2B Antibody
Cat.-No [PP1014P]



Formalin-Fixed, Paraffin-Embedded Human
sections of colon/rectum adenocarcinoma
stained with CXCL3 / MIP2B Antibody Cat.-No
[PP1014P]



Formalin-Fixed, Paraffin-Embedded Human sections of colon/rectum adenocarcinoma stained with CXCL3 / MIP2B Antibody Cat.-No [PP1014P]