

## Product datasheet for **PP1009P2**

### **CX3CL1 Rabbit Polyclonal Antibody**

#### **Product data:**

**Product Type:** Primary Antibodies

**Applications:** ELISA, FN, IHC, WB

**Recommended Dilution:** **Neutralization.**

**Sandwich ELISA:** To detect Human Fractalkine by Sandwich ELISA (using 100 µl/well antibody solution) a concentration of 0.5-2.0 µg/ml of this antibody is required. This antigen affinity purified antibody, in conjunction with Biotinylated Anti-Human Fractalkine (Cat.-No PP1009B1 or PP1009B2) as a detection antibody, allows the detection of at least 0.2-0.4 ng/well of recombinant Human Fractalkine.

**Western Blot:** To detect Human Fractalkine by Western Blot analysis this antibody can be used at a concentration of 0.1-0.2 µg/ml. Used in conjunction with compatible secondary reagents the detection limit for recombinant hFractalkine is 1.5-3.0 ng/lane, under either reducing or non-reducing conditions.

**Immunohistochemistry on Paraffin Sections:** 0.25 µg/ml with an overnight incubation at 4°C. This antibody stained formalin-fixed, paraffin-embedded sections of human pancreas malignant ductal adenocarcinoma. An HRP-labeled polymer detection system was used with a DAB chromogen. Heat induced antigen retrieval with a pH 6.0 sodium citrate buffer is recommended. *Tissue samples were provided by the Cooperative Human Tissue Network, which is funded by the National Cancer Institute.*

**Reactivity:** Human

**Host:** Rabbit

**Clonality:** Polyclonal

**Immunogen:** Highly pure (> 98%) E.coli derived recombinant Human Fractalkine (Cat.-No PA057).

**Specificity:** This antibody is specific to Human Fractalkine.

**Formulation:** PBS, pH 7.2 without preservatives

State: Aff - Purified

State: Lyophilized (sterile filtered) purified Ig fraction

**Reconstitution Method:** Restore in sterile water to a concentration of 0.1-1.0 mg/ml.

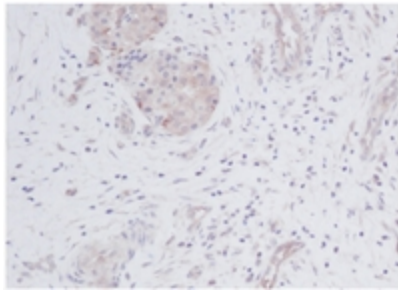
**Purification:** Affinity Chromatography using an immobilized Human Fractalkine matrix

**Conjugation:** Unconjugated



[View online »](#)

<b>Storage:</b>	Prior to reconstitution store at 2-8°C. Following reconstitution store undiluted at 2-8°C for one month or (in aliquots) at -20°C for longer. Avoid repeated freezing and thawing.
<b>Stability:</b>	Shelf life: one year from despatch.
<b>Gene Name:</b>	C-X3-C motif chemokine ligand 1
<b>Database Link:</b>	<a href="#">Entrez Gene 6376 Human P78423</a>
<b>Background:</b>	CX3CL1 is a member of the delta chemokine subfamily that contains a unique CX3C cysteine motif near the N-terminal. Unlike other known chemokines, it is a type 1 membrane protein containing a chemokine domain tethered on a long mucin-like stalk. CX3CL1, a leukocyte chemoattractant, is expressed in various tissues including the brain, heart, lung, kidney, skeletal muscle, and testis. The expression is reported to be up-regulated in endothelial cells and microglia by inflammatory signals. CX3CR1, a specific receptor for fractalkine, mediates both leukocyte migration and adhesion.
<b>Synonyms:</b>	Neurotactin, FKN, NTT, SCYD1
<b>Note:</b>	Centrifuge vial prior to opening!

**Product images:**

Formalin-fixed, paraffin-embedded sections of human pancreas malignant ductal adenocarcinoma using Fractalkine / CX3CL1 Cat.-No [PP1009P]