

Product datasheet for **PP1009P1**

CX3CL1 Rabbit Polyclonal Antibody

Product data:

Product Type: Primary Antibodies

Applications: ELISA, FN, IHC, WB

Recommended Dilution: **Neutralization.**

Sandwich ELISA: To detect Human Fractalkine by Sandwich ELISA (using 100 µl/well antibody solution) a concentration of 0.5-2.0 µg/ml of this antibody is required. This antigen affinity purified antibody, in conjunction with Biotinylated Anti-Human Fractalkine (Cat.-No PP1009B1 or PP1009B2) as a detection antibody, allows the detection of at least 0.2-0.4 ng/well of recombinant Human Fractalkine.

Western Blot: To detect Human Fractalkine by Western Blot analysis this antibody can be used at a concentration of 0.1-0.2 µg/ml. Used in conjunction with compatible secondary reagents the detection limit for recombinant hFractalkine is 1.5-3.0 ng/lane, under either reducing or non-reducing conditions.

Immunohistochemistry on Paraffin Sections: 0.25 µg/ml with an overnight incubation at 4°C. This antibody stained formalin-fixed, paraffin-embedded sections of human pancreas malignant ductal adenocarcinoma. An HRP-labeled polymer detection system was used with a DAB chromogen. Heat induced antigen retrieval with a pH 6.0 sodium citrate buffer is recommended. *Tissue samples were provided by the Cooperative Human Tissue Network, which is funded by the National Cancer Institute.*

Reactivity: Human

Host: Rabbit

Clonality: Polyclonal

Immunogen: Highly pure (> 98%) E.coli derived recombinant Human Fractalkine (Cat.-No PA057).

Specificity: This antibody is specific to Human Fractalkine.

Formulation: PBS, pH 7.2 without preservatives

State: Aff - Purified

State: Lyophilized (sterile filtered) purified Ig fraction

Reconstitution Method: Restore in sterile water to a concentration of 0.1-1.0 mg/ml.

Purification: Affinity Chromatography using an immobilized Human Fractalkine matrix

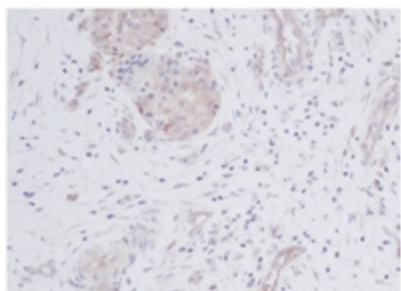
Conjugation: Unconjugated



[View online »](#)

| | |
|-----------------------|-----------------------------------------------------------------------------------------------------------------------------------------------------------------------------------------------------------------------------------------------------------------------------------------------------------------------------------------------------------------------------------------------------------------------------------------------------------------------------------------------------------------------------------------------------------------------------------------------------------------|
| Storage: | <p>Prior to reconstitution store at 2-8°C.</p> <p>Following reconstitution store undiluted at 2-8°C for one month or (in aliquots) at -20°C for longer.</p> <p>Avoid repeated freezing and thawing.</p> |
| Stability: | Shelf life: one year from despatch. |
| Gene Name: | C-X3-C motif chemokine ligand 1 |
| Database Link: | Entrez Gene 6376 Human P78423 |
| Background: | <p>CX3CL1 is a member of the delta chemokine subfamily that contains a unique CX3C cysteine motif near the N-terminal. Unlike other known chemokines, it is a type 1 membrane protein containing a chemokine domain tethered on a long mucin-like stalk. CX3CL1, a leukocyte chemoattractant, is expressed in various tissues including the brain, heart, lung, kidney, skeletal muscle, and testis. The expression is reported to be up-regulated in endothelial cells and microglia by inflammatory signals. CX3CR1, a specific receptor for fractalkine, mediates both leukocyte migration and adhesion.</p> |
| Synonyms: | Neurotactin, FKN, NTT, SCYD1 |
| Note: | Centrifuge vial prior to opening! |

Product images:



Formalin-fixed, paraffin-embedded sections of human pancreas malignant ductal adenocarcinoma using Fractalkine / CX3CL1 Cat.-No [PP1009P]