

Product datasheet for **PP050P2**

Lep Rabbit Polyclonal Antibody

Product data:

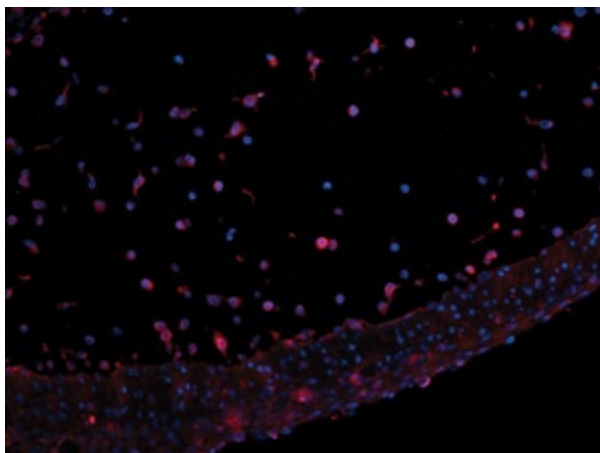
Product Type:	Primary Antibodies
Applications:	ELISA, IHC, WB
Recommended Dilution:	Neutralization. ELISA.: (Indirect): To detect mLeptin by indirect ELISA (using 100 µl/well antibody solution) a concentration of 0.5-2.0 µg/ml of this antibody is required. This antigen affinity purified antibody, in conjunction with compatible secondary reagents, allows the detection of at least 0.2-0.4 ng/well of recombinant mLeptin. (Sandwich): To detect mLeptin by sandwich ELISA (using 100 µl/well antibody solution) a concentration of 0.5-2.0 µg/ml of this antibody is required. This antigen affinity purified antibody, in conjunction with Biotinylated Anti-Murine Leptin (PP050B1, PP050B1) as a detection antibody, allows the detection of at least 0.2-0.4 ng/well of recombinant mLeptin. Western Blot: To detect mLeptin by Western Blot analysis this antibody can be used at a concentration of 0.1-0.2 µg/ml. Used in conjunction with compatible secondary reagents the detection limit for recombinant mLeptin is 1.5-3.0 ng/lane, under either reducing or non-reducing conditions. Immunohistochemistry: The antibody can be used with 4% PFA, paraffin-embedded sections. Heat induced antigen retrieval with a 100mM citric acid was used.
Reactivity:	Mouse
Host:	Rabbit
Clonality:	Polyclonal
Immunogen:	Highly pure (>98%) recombinant mLeptin (murine Leptin).
Specificity:	This antibody recognises Murine Leptin.
Formulation:	PBS, pH 7.2 without preservatives. State: Aff - Purified State: Lyophilized purified Ig fraction.
Reconstitution Method:	Restore in sterile water to a concentration of 0.1-1.0 mg/ml.
Purification:	Affinity chromatography.
Conjugation:	Unconjugated



[View online »](#)

Storage:	Store the antibody prior to reconstitution at -20°C. Following reconstitution the antibody can be stored at 2-8°C for one month or at -20°C for longer. Avoid repeated freezing and thawing.
Stability:	Shelf life: One year from despatch.
Gene Name:	leptin
Database Link:	Entrez Gene 16846 Mouse P41160
Background:	Leptin plays a critical role in the regulation of body weight by inhibiting food intake and stimulating energy expenditure. Defects in Leptin production cause severe hereditary obesity in rodents and humans. In addition to its effects on body weight, leptin has a variety of other functions, including the regulation of hematopoiesis, angiogenesis, wound healing, and the immune and inflammatory response. The Leptin gene is the human homolog of the gene (ob) mutant in the mouse 'obese' phenotype. Defects in the Leptin gene are the cause of profound obesity and type II diabetes.
Synonyms:	LEP, OB, OBS, Obesity factor, Obese protein
Note:	Centrifuge vial prior to opening!

Product images:



Immunohistochemistry The Leptin antibody stained 4% PFA, paraffin-embedded sections of *Trichuris muris* infected murine tissue. The primary antibody was incubated at 0.20 ug/mL overnight at 4°C and the secondary antibody was a cyanine-3 conjugated Donkey anti-Rabbit (Jackson ImmunoResearch). Heat induced antigen retrieval with a 100mM citric acid was used. Information and photo are courtesy of David Artis, University of Pennsylvania.

