

## Product datasheet for PP024P2

### Ccl9 Rabbit Polyclonal Antibody

#### Product data:

Product Type:	Primary Antibodies
Applications:	ELISA, FN, WB
Recommended Dilution:	<b>Sandwich ELISA:</b> To detect Murine MIP-1 gamma by Sandwich ELISA (using 100 µl/well) a concentration of 0.5-2.0 µg/ml of this antibody is required. This Antigen Afiinity purified antibody, in conjunction with Biotin conjugated anti-Murine MIP-1 gamma (PP024B1 or PP024B2) as a Detection antibody, allows the detection of at least 0.2-0.4 ng/well of recombinant Murine MIP-1 gamma . <b>Western blot:</b> To detect Murine MIP-1 gamma by Western Blot analysis this antibody can be used at a concentration of 0.1-0.2 µg/ml. Used in conjunction with compatible secondary reagents the detection limit for recombinant Murine MIP-1 gamma is 1.5-3.0 ng/lane, under either reducing or non-reducing conditions.
Reactivity:	Mouse
Host:	Rabbit
Clonality:	Polyclonal
Immunogen:	Highly pure (>98%) E.coli derived recombinant Murine MIP-1-gamma
Specificity:	This antibody reacts with Murine MIP-1 gamma
Formulation:	PBS, pH 7.2 without preservatives. State: Aff - Purified State: Lyophilized (sterile filtered) purified Ig fraction.
Reconstitution Method:	Restore in sterile water to a concentration of 0.1-1.0 mg/ml.
Purification:	Affinity Chromatography using an immobilized Murine MIP-1 gamma Matrix.
Conjugation:	Unconjugated
Storage:	The lyophilized antibody is stable at Room Temperature for up to one month. The reconstituted antibody can be stored at 2-8°C for at least two weeks or at -20°C for longer. Avoid repeated freezing and thawing.
Stability:	Shelf life: One year from despatch.
Gene Name:	chemokine (C-C motif) ligand 9



[View online »](#)

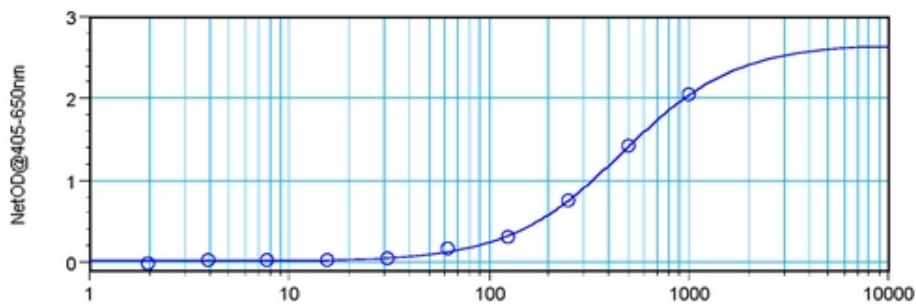
Database Link: [Entrez Gene 20308 Mouse P51670](#)

**Background:** This chemotactic factor that attracts monocytes, lymphocytes, basophils and eosinophils may play a role in neoplasia and inflammatory host responses and can bind heparin. Its highest expression is found in the small intestine and peripheral blood cells. It is induced by interferon gamma, mitogens and interleukin 1 and belongs to the intercrine beta (chemokine CC) family.

**Synonyms:** C-C motif chemokine 9, CCL-9, MIP1-gamma, Mrp2, MRP-2, CCF18, Small-inducible cytokine A9, Scya10, Scya9

**Note:** Centrifuge vial prior to opening!

### Product images:



Sandwich ELISA using Anti Murine MIP-1 gamma antibody