

Product datasheet for PP024B1

Ccl9 Rabbit Polyclonal Antibody

Product data:

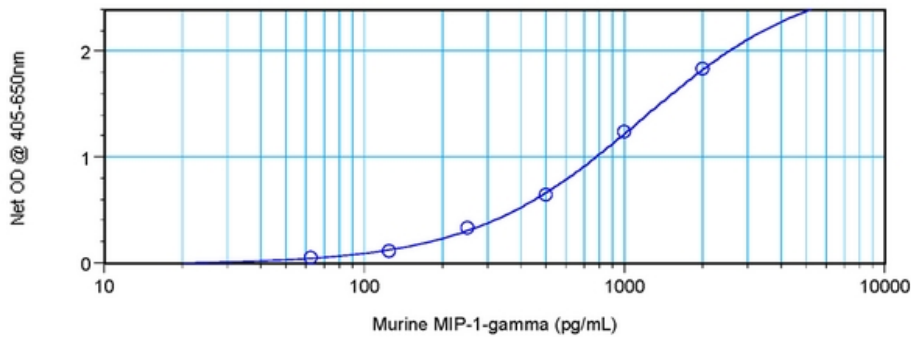
Product Type:	Primary Antibodies
Applications:	ELISA, WB
Recommended Dilution:	<p>Direct ELISA: To detect Murine MIP-1 gamma by Direct ELISA (using 100 µl/well antibody solution) this antibody can be used at a concentration of ~1 µg/ml. This Biotinylated polyclonal antibody allows the detection of at least 0.2-0.4 ng/well of recombinant Murine MIP-1 gamma.</p> <p>Sandwich ELISA: To detect Murine MIP-1 gamma by Sandwich ELISA (using 100 µl/well) a concentration of 0.25-1.0 µg/ml of this antibody is required. This Biotinylated polyclonal antibody, in conjunction with anti-Murine MIP-1 gamma (PP024P1 or PP024P2) as a Capture antibody, allows the detection of at least 0.2-0.4 ng/well of recombinant Murine MIP-1 gamma .</p> <p>Western blot: To detect Murine MIP-1 gamma by Western Blot analysis this antibody can be used at a concentration of 0.1-0.2 µg/ml. Used in conjunction with compatible secondary reagents the detection limit for recombinant Murine MIP-1 gamma is 1.5-3.0 ng/lane, under either reducing or non-reducing conditions.</p>
Reactivity:	Mouse
Host:	Rabbit
Clonality:	Polyclonal
Immunogen:	Highly pure (>98%) E.coli derived recombinant Murine MIP-1-gamma
Specificity:	This antibody reacts with Murine MIP-1 gamma
Formulation:	<p>PBS, pH 7.2 without preservatives.</p> <p>Label: Biotin</p> <p>State: Lyophilized (sterile filtered) purified Ig fraction.</p> <p>Label: conjugated</p>
Reconstitution Method:	Restore in sterile PBS containing 0.1% BSA to a concentration of 0.1-1.0 mg/ml.
Purification:	Affinity Chromatography using an immobilized Murine MIP-1 gamma Matrix.
Conjugation:	Biotin



[View online »](#)

Storage:	The lyophilized antibody is stable at Room Temperature for up to one month. The reconstituted antibody can be stored at 2-8°C for at least two weeks or at -20°C for longer. Avoid repeated freezing and thawing.
Stability:	Shelf life: One year from despatch.
Gene Name:	chemokine (C-C motif) ligand 9
Database Link:	Entrez Gene 20308 Mouse P51670
Background:	This chemotactic factor that attracts monocytes, lymphocytes, basophils and eosinophils may play a role in neoplasia and inflammatory host responses and can bind heparin. Its highest expression is found in the small intestine and peripheral blood cells. It is induced by interferon gamma, mitogens and interleukin 1 and belongs to the intercrine beta (chemokine CC) family.
Synonyms:	C-C motif chemokine 9, CCL-9, MIP1-gamma, Mrp2, MRP-2, CCF18, Small-inducible cytokine A9, Scya10, Scya9
Note:	Centrifuge vial prior to opening!

Product images:



Direct ELISA using Biotin conjugated anti-Murine MIP-1 gamma antibody