

Product datasheet for **PP022B2**

Csf3 Rabbit Polyclonal Antibody

Product data:

Product Type:	Primary Antibodies
Applications:	ELISA, WB
Recommended Dilution:	Direct ELISA: To detect Mouse G-CSF by direct ELISA (using 100 µl/well antibody solution) this antibody can be used at a concentration of ~1.0 µg/ml. This Biotin conjugated antibody allows the detection of at least 0.2 ng/well of recombinant mG-CSF. Sandwich ELISA: To detect Mouse G-CSF by Sandwich ELISA (using 100 µl/well antibody solution) this antibody can be used at a concentration of 0.25-1.0 µg/ml. Used in conjunction with Purified Anti- Murine G-CSF (<i>Cat.-No</i> PP022P1 or PP022P2), allows the detection of at least 0.2-0.4 ng/well of recombinant Mouse G-CSF. Western blot: To detect Mouse G-CSF by Western Blot analysis this antibody can be used at a concentration of 0.1-0.2 µg/ml. Used in conjunction with compatible secondary reagents the detection limit for recombinant Mouse G-CSF is 1.5-3.0 ng/lane, under either reducing or non-reducing conditions.
Reactivity:	Mouse
Host:	Rabbit
Clonality:	Polyclonal
Immunogen:	Highly pure (>98%) E.coli derived recombinant Murine G-CSF.
Specificity:	This antibody reacts with Murine G-CSF.
Formulation:	PBS, pH 7.2 without preservatives Label: Biotin State: Lyophilized (sterile filtered) purified Ig fraction Label: conjugated
Reconstitution Method:	Restore in sterile PBS containing 0.1% BSA to a concentration of 0.1-1.0 mg/ml.
Purification:	Affinity Chromatography
Conjugation:	Biotin
Storage:	Prior to reconstitution store at 2-8°C. Following reconstitution store undiluted at 2-8°C for one month or (in aliquots) at -20°C for longer. Avoid repeated freezing and thawing.



[View online »](#)

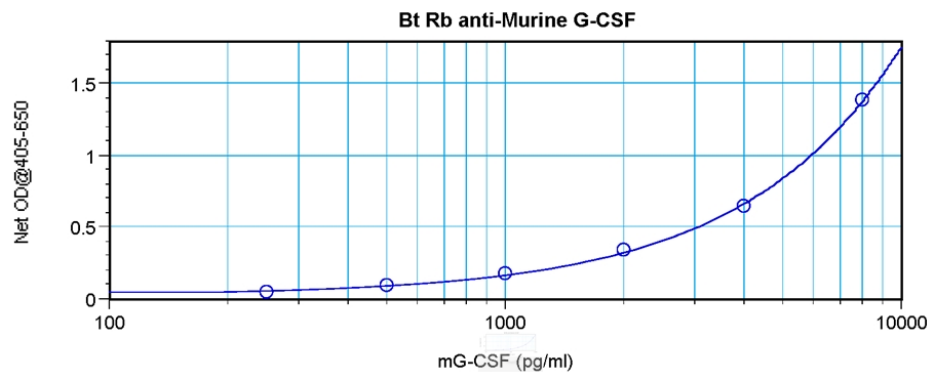
Stability: Shelf life: one year from despatch.
Gene Name: colony stimulating factor 3 (granulocyte)
Database Link: [Entrez Gene 12985 Mouse P09920](#)

Background: Granulocyte Colony Stimulating Factor (G-CSF) a cytokine that controls the production, differentiation, and function of granulocytes. It is a potent stimulator of bone marrow cells especially those of neutrophil lineage. In addition, G-CSF can enhance the survival and activate the immunological functions of mature neutrophils.

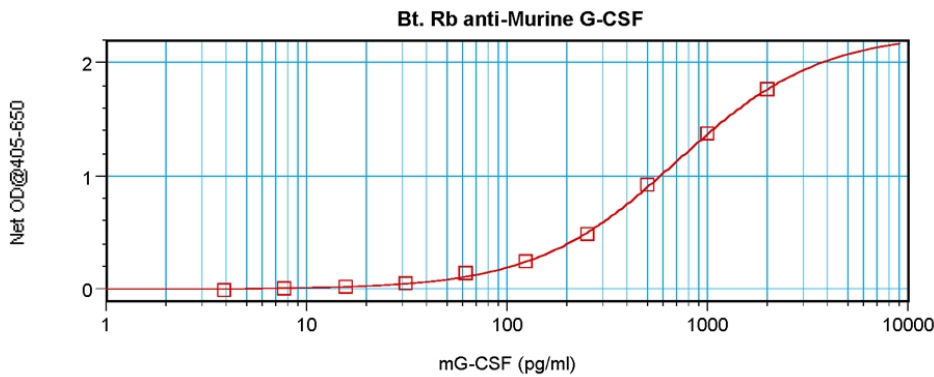
Synonyms: CSF3, GCSF, Pluripoietin, C17orf33

Note: Centrifuge vial prior to opening!

Product images:



Direct ELISA using G-CSF Antibody Cat.-No PP022B



Sandwich ELISA using G-CSF Antibody Cat.-No PP022B