

## Product datasheet for **PP020P1**

### MCP1 (CCL2) Rabbit Polyclonal Antibody

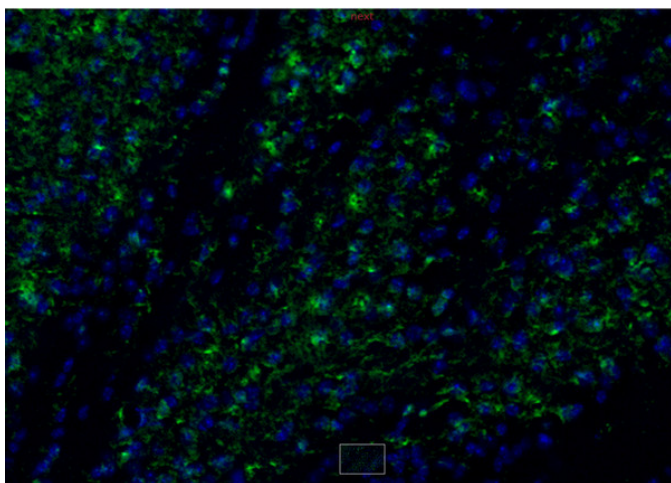
#### Product data:

Product Type:	Primary Antibodies
Applications:	ELISA, FN, IHC, WB
Recommended Dilution:	<p><b>Neutralization:</b> To yield one-half maximal inhibition [ND50] of the biological activity of Murine JE(MCP-1) (100.0 ng/ml), a concentration of 4.0-6.0 µg/ml of this antibody is required.</p> <p><b>Sandwich ELISA:</b> To detect Murine JE (MCP-1) by sandwich ELISA (using 100 µl/well antibody solution) a concentration of 0.5-2.0 µg/ml of this antibody is required. This antigen affinity purified antibody, in conjunction with Biotinylated Anti-Murine JE (MCP-1)(Cat.-No PP020B1 or PP020B2) as a detection antibody, allows the detection of at least 0.2-0.4 ng/well of recombinant Murine JE(MCP-1).</p> <p><b>Western Blot:</b> To detect Murine JE(MCP-1) by Western Blot analysis this antibody can be used at a concentration of 0.1-0.2 µg/ml. Used in conjunction with compatible secondary reagents the detection limit for recombinant Murine JE(MCP-1) is 1.5-3.0 ng/lane, under either reducing or non-reducing conditions.</p> <p><b>Immunohistochemistry:</b> This antibody stained colchicine injected mouse brain (including caudate putamen) tissue. The primary antibody was incubated at 1.0 µg/ml overnight at 4°C. This was followed by a peroxidase conjugated secondary antibody and then a fluorescein Tyramide Signal Amplification (TSA™) reagent. Optimal concentrations and conditions may vary.</p>
Reactivity:	Mouse
Host:	Rabbit
Clonality:	Polyclonal
Immunogen:	Highly pure (>98%) E.coli derived recombinant Mouse JE (MCP-1).
Specificity:	Reacts with Murine JE(MCP-1). Other species not tested.
Formulation:	PBS, pH 7.2 without preservatives. State: Aff - Purified State: Lyophilized (sterile filtered) purified Ig fraction.
Reconstitution Method:	Restore in sterile water to a concentration of 0.1-1.0 mg/ml.
Purification:	Affinity Chromatography employing immobilized Murine JE matrix.
Conjugation:	Unconjugated



[View online »](#)

<b>Storage:</b>	Store lyophilized at 2-8°C for 6 months or at -20°C long term. After reconstitution store the antibody undiluted at 2-8°C for one month or (in aliquots) at -20°C long term. Avoid repeated freezing and thawing.
<b>Stability:</b>	Shelf life: one year from despatch.
<b>Gene Name:</b>	C-C motif chemokine ligand 2
<b>Database Link:</b>	<a href="#">P13500</a>
<b>Background:</b>	This chemotactic factor attracts monocytes and basophils but not neutrophils or eosinophils and augments monocyte anti-tumor activity. It has been implicated in the pathogenesis of diseases characterized by monocytic infiltrates, like psoriasis, rheumatoid arthritis or atherosclerosis. It may be involved in the recruitment of monocytes into the arterial wall during the disease process of atherosclerosis.
<b>Synonyms:</b>	C-C motif chemokine 2, SCYA2, MCAF, Small-inducible cytokine A2, MCP-1, HC11, HC-11
<b>Note:</b>	Centrifuge vial prior to opening!

**Product images:**

Immunohistochemistry using PP020P, Merged 300dpi.