

## Product datasheet for PP015P1

### Ccl7 Goat Polyclonal Antibody

#### Product data:

Product Type:	Primary Antibodies
Applications:	ELISA, FN, WB
Recommended Dilution:	<p><b>Neutralization:</b> To yield one-half maximal inhibition [<b>ND</b><sub>50</sub>] of the biological activity of Murine MCP-3 (100.0 ng/ml), a concentration of 4.0–6.0 µg/ml of this antibody is required.</p> <p><b>Sandwich ELISA:</b> To detect Mouse MCP-3 by Sandwich ELISA (using 100 µl/well antibody solution) a concentration of 0.5-2.0 µg/ml of this antibody is required. This antigen affinity purified antibody, in conjunction with Biotinylated Anti-Murine MCP-3 (Cat.-No PP015B1 or PP015B2) as a detection antibody, allows the detection of at least 0.2-0.4 ng/well of recombinant Mouse MCP-3</p> <p><b>Western Blot:</b> To detect Mouse MCP-3 by Western Blot analysis this antibody can be used at a concentration of 0.1-0.2 µg/ml. Used in conjunction with compatible secondary reagents the detection limit for recombinant Mouse MCP-3 is 1.5-3.0 ng/lane, under either reducing or non-reducing conditions.</p>
Reactivity:	Mouse
Host:	Goat
Clonality:	Polyclonal
Immunogen:	Highly pure (>98%) E.coli derived recombinant Murine MCP-3.
Specificity:	Reacts with Macrophage Chemotactic Protein-3 (MCP-3)
Formulation:	<p>PBS, pH 7.2 without preservatives</p> <p>State: Aff - Purified</p> <p>State: Lyophilized (Sterile filtered) purified Ig fraction</p>
Reconstitution Method:	Restore in sterile water to a concentration of 0.1-1.0 mg/ml.
Purification:	Affinity Chromatography employing an immobilized Murine MCP-3 matrix
Conjugation:	Unconjugated
Storage:	<p>Prior to reconstitution store at 2-8°C.</p> <p>Following reconstitution store undiluted at 2-8°C for one month or (in aliquots) at -20°C for longer.</p> <p>Avoid repeated freezing and thawing.</p>
Stability:	Shelf life: one year from despatch.



[View online »](#)

**Gene Name:** chemokine (C-C motif) ligand 7

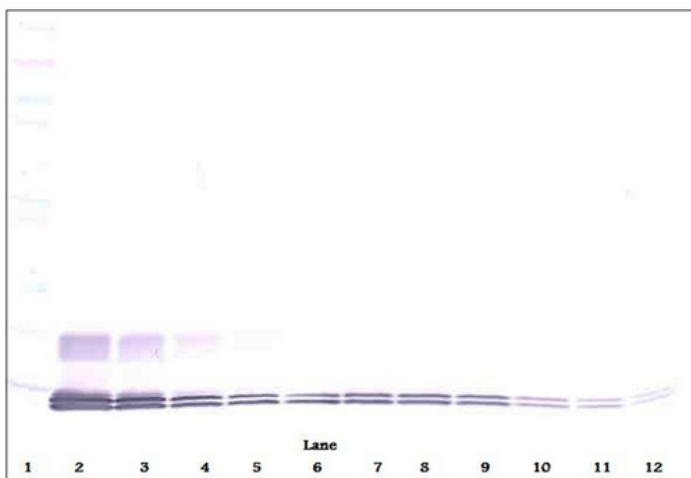
**Database Link:** [Entrez Gene 20306 Mouse Q03366](#)

**Background:** This is a secreted chemokine which attracts macrophages during inflammation and metastasis. It is a member of the C-C subfamily of chemokines which are characterized by having two adjacent cysteine residues. The protein is an in vivo substrate of matrix metalloproteinase 2, an enzyme which degrades components of the extracellular matrix.

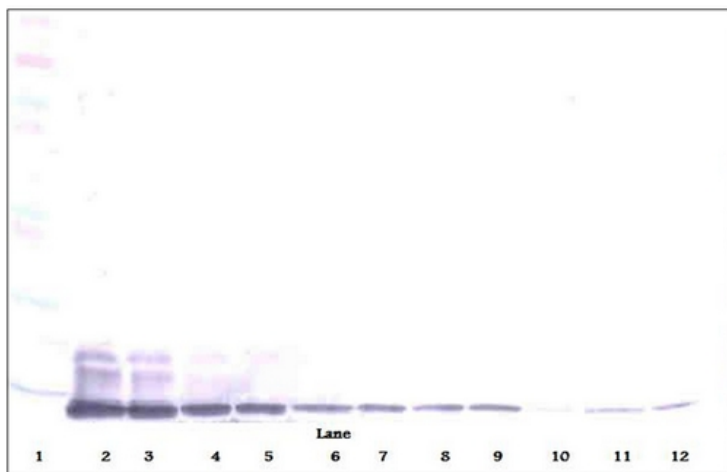
**Synonyms:** Small-inducible cytokine A7, CCL-7, MCP-3, C-C motif chemokine 7, SCYA6, SCYA7, NC28

**Note:** Centrifuge vial prior to opening!

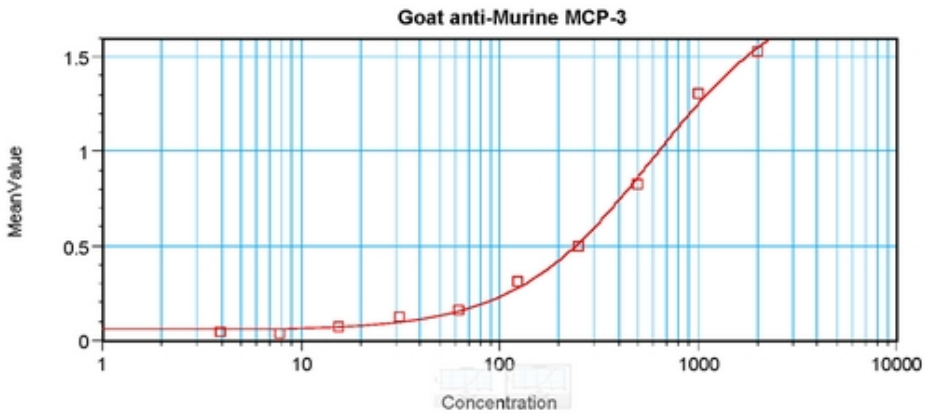
**Product images:**



Western Blot (Unreduced) using MCP3 / CCL7 Antibody Cat.-No PP015P



Western Blot (Reduced) using MCP3 / CCL7 Antibody Cat.-No PP015P



Sandwich ELISA using MCP3 / CCL7 Antibody Cat.-  
No PP015P