

## Product datasheet for PP013B1

### IL7 Rabbit Polyclonal Antibody

#### Product data:

|                        |  |
|------------------------|--|
| Product Type:          | Primary Antibodies   |
| Applications:          | ELISA, WB  |
| Recommended Dilution:  | <b>Direct ELISA:</b> To detect Murine IL-7 by Direct ELISA (using 100 µl/well antibody solution) a concentration of 0.25–1.0 µg/ml of this antibody is required. This biotinylated polyclonal antibody, in conjunction with compatible secondary reagents, allows the detection of at least 0.2–0.4 ng/well of recombinant Murine IL-7.<br><b>Sandwich ELISA:</b> To detect Murine IL-7 by Sandwich ELISA (using 100 µl/well antibody solution) a concentration of 0.25–1.0 µg/ml of this antibody is required. This biotinylated polyclonal antibody, in conjunction with Anti-Murine IL-7 (Cat.-No PP013P1 or PP013P2) as a capture antibody, allows the detection of at least 0.2–0.4 ng/well of recombinant Murine IL-7.<br><b>Western Blot:</b> To detect Murine IL-7 by Western Blot analysis this antibody can be used at a concentration of 0.1-0.2 µg/ml. When used in conjunction with compatible secondary reagents the detection limit for recombinant Murine IL-7 is 1.5 - 3.0 ng/lane, under either reducing or non-reducing conditions. |
| Reactivity:            | Mouse  |
| Host:                  | Rabbit   |
| Clonality:             | Polyclonal   |
| Immunogen:             | Highly pure (>98%) E.coli derived recombinant Mouse IL-7 (Cat.-No PA014).  |
| Specificity:           | This antibody reacts with Mouse Interleukin-7 (IL-7).<br>Other species not tested.   |
| Formulation:           | PBS, pH 7.2 without preservatives<br>Label: Biotin<br>State: Lyophilized purified Ig fraction<br>Label: conjugated   |
| Reconstitution Method: | Restore in sterile PBS containing 0.1% BSA to a concentration of 0.1-1.0 mg/ml.  |
| Purification:          | Affinity Chromatography  |
| Conjugation:           | Biotin   |



[View online »](#)

**Storage:** Store the antibody prior to reconstitution at -20°C. Following reconstitution the antibody can be stored at 2-8°C for one month or at -20°C for longer. Avoid repeated freezing and thawing.

**Stability:** Shelf life: One year from despatch.

**Gene Name:** interleukin 7

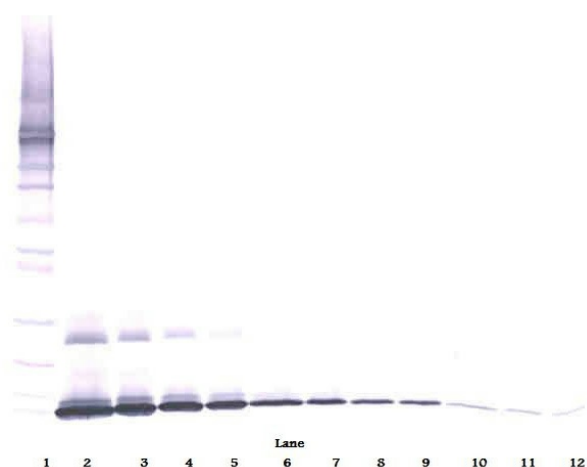
**Database Link:** [Entrez Gene 16196 Mouse P10168](#)

**Background:** Interleukin 7 (IL7) is a lymphoid cell growth factor that affects pre-B, pro-B, and early T cells. IL7 was previously known as pre-B cell growth factor and lymphopoietin 1. IL7 supports the growth of early B cells from long-term lymphoid bone marrow cultures. It is mitogenic to thymocytes and enhances the response of cells to other stimuli such as polyhydroxyalkanoate (PHA) and concanavalin A (ConA). IL7 stimulates the proliferation of CD4+/CD8+ cells. The proliferative response of thymocytes to IL7 is not affected by antibodies to the T cell growth factors such as IL2, IL4 and IL6, suggesting that IL7 is capable of stimulating T cell proliferation through a pathway independent of the known T cell growth factors. Mature T cells respond to IL7 and Con A, but not to IL7 alone. In myeloid lineage cells, IL7 upregulates the production of pro-inflammatory cytokines and stimulates the tumoricidal activity of monocytes/macrophages. IL7 is expressed by adherent stromal cells from various tissues.

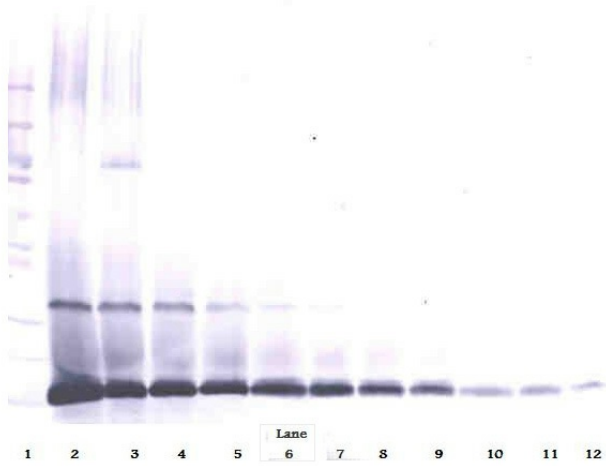
**Synonyms:** IL-7

**Note:** Centrifuge vial prior to opening!

### Product images:

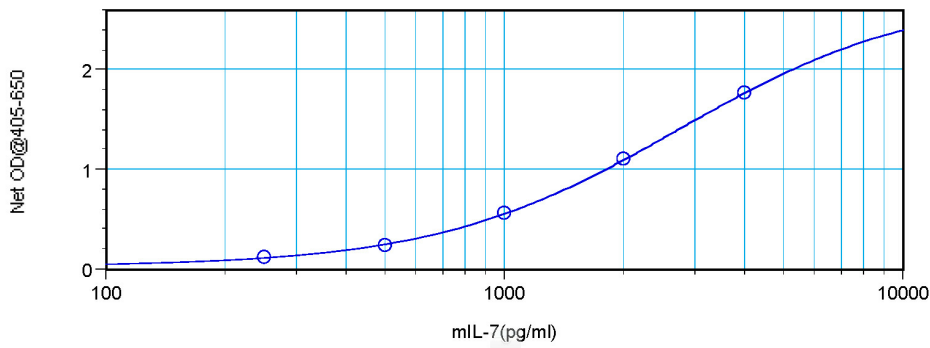


Western Blot (Unreduced) using IL7 Antibody  
Cat.-No PP013B



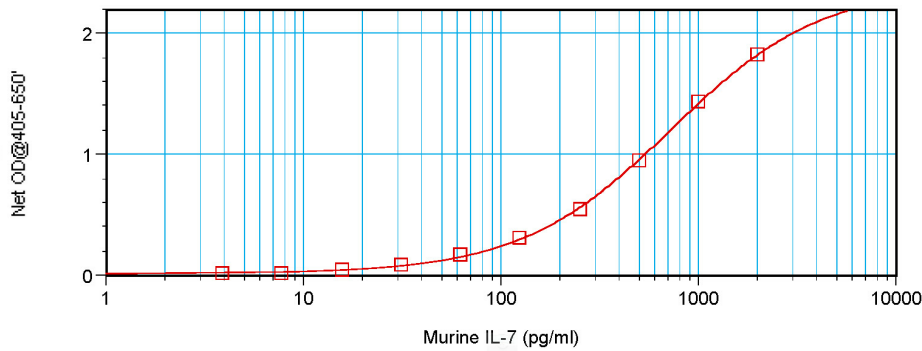
Western Blot (Reduced) using IL7 Antibody Cat.-No PP013B

Bt. Rb anti-Murine IL-7



Direct ELISA using IL7 Antibody Cat.-No PP013B

Bt. Rb anti-Murine IL-7



Sandwich ELISA using IL7 Antibody Cat.-No PP013B