

Product datasheet for **PM1212P**

SCF (KITLG) Mouse Monoclonal Antibody

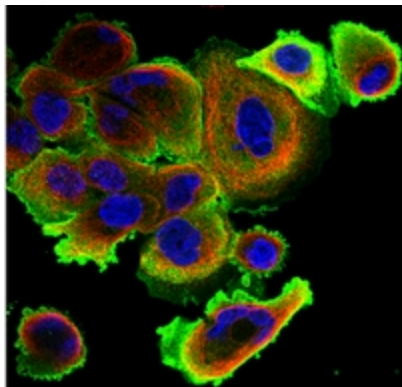
Product data:

Product Type:	Primary Antibodies
Applications:	ELISA, IF, WB
Recommended Dilution:	Sandwich ELISA: In a Sandwich ELISA (assuming 100 µl/well), a concentration of 4.0-8.0 µg/ml of this antibody will detect at least 1000 pg/ml of recombinant human SCF when used with Biotinylated antigen affinity purified anti-Human SCF (<i>Cat.-No</i> PP1066B) as the detection antibody at a concentration of approximately 1.0-2.0 µg/ml. Western Blot: To detect Human SCF by Western Blot analysis this antibody can be used at a concentration of 0.25-0.50 µg/ml. Used in conjunction with compatible secondary reagents the detection limit for recombinant hSCF is 2.0-4.0 ng/lane, under non-reducing conditions. Immunohistochemistry: This antibody stained CACO-2 cells and A-431 cells. The primary antibody was incubated at 2.0 µg/ml overnight at 4°C followed by a fluorescent labeled secondary antibody. <i>Information and photo are courtesy of the Cell Profiling group, SciLifeLab Stockholm.</i>
Reactivity:	Human
Host:	Mouse
Isotype:	IgG1
Clonality:	Monoclonal
Immunogen:	Highly purified (>98%) E.coli derived Recombinant Human SCF (<i>Cat.-No</i> PA124)
Specificity:	Recognizes Human SCF. Other species not tested.
Formulation:	PBS without preservatives State: Azide Free State: Lyophilized purified Ig fraction.
Reconstitution Method:	Restore in sterile water to a concentration of 1.0 mg/ml.
Concentration:	1.0 mg/ml
Purification:	Protein A Chromatography
Conjugation:	Unconjugated



[View online »](#)

Storage:	Store lyophilized at 2-8°C for 6 months or at -20°C long term. After reconstitution store the antibody undiluted at 2-8°C for one month or (in aliquots) at -20°C long term. Avoid repeated freezing and thawing.
Stability:	Shelf life: one year from despatch.
Gene Name:	KIT ligand
Database Link:	Entrez Gene 4254 Human P21583
Synonyms:	KITL, Kit ligand, c-Kit ligand, Stem cell factor, Mast cell growth factor, MGF
Note:	Protocol: <u>Immunofluorescence: General Cell:</u> Please refer to the antibody Product Information Sheet for the primary antibody concentration and the selected cell line. 1. A multiwell plate (Glass bottom, 96-well, 300µL) is coated with fibronectin (conc. 12.5µg/mL) for 1 hour at room temperature (RT). 2. Cells are seeded (10,000-15,000 cells per well) and incubated at 37 °C in humidified air with 5.0% CO ₂ for at least 4 hours. 3. Growth medium is removed and the cells are washed in PBS (8.1mM Na ₂ HPO ₄ , 1.5mM KH ₂ PO ₄ , 137mM NaCl, 2.7mM KCl, pH 7.2). 4. The cells are fixed for 15 minutes in ice cold 4% paraformaldehyde (pH 7.2-7.3) in growth medium supplemented with 10% fetal bovine serum (FBS). 5. The cells are permeabilized 3 times for 5 minutes each with 0.1% Triton X-100 in PBS. 6. The cells are washed once with PBS. 7. The primary antibody is diluted in PBS supplemented with 4% FBS and incubated overnight at 4°C. 8. The following day, the cells are washed 4 times for 10 minutes each with PBS. 9. The secondary antibody is diluted to 1µg/mL in PBS supplemented with 4% FBS and incubated for 1.5 hours at room temperature. 10. The cells are counterstained for 4 minutes with the nuclear probe DAPI. 11. The cells are washed 4 times for 10 minutes each with PBS before mounted in PBS containing 78% glycerol.
Protein Families:	Druggable Genome, Transmembrane
Protein Pathways:	Cytokine-cytokine receptor interaction, Hematopoietic cell lineage, Melanogenesis, Pathways in cancer

Product images:

Immunofluorescence using KITLG / SCF Antibody