

Product datasheet for **PM1121**

IL10 Mouse Monoclonal Antibody

Product data:

Product Type:	Primary Antibodies
Applications:	ELISA, IHC, WB
Recommended Dilution:	Sandwich ELISA (assuming 100µl/well), a concentration of 8.0-10.0 µg/ml of this antibody will detect at least 1000 pg/well of recombinant Human IL-10 when used with Biotinylated Antigen Affinity purified anti-Human IL-10 (<i>Cat.-No</i> PP1032B) as the detection antibody at a concentration of approximately 0.05-0.1 µg/ml. Western Blot: To detect hIL-10 by Western Blot analysis this antibody can be used at a concentration of 0.25-0.50 µg/ml. Used in conjunction with compatible secondary reagents the detection limit for recombinant hIL-10 is 2.0-4.0 ng/lane, under reducing or non-reducing conditions. Immunohistochemistry on Paraffin Sections: This antibody stained formalin-fixed paraffin-embedded sections of human pancreas adenocarcinoma tissue. The recommended concentration is 5.0 µg/ml with an overnight incubation at 4°C. An HRP-labeled polymer detection system was used with a DAB chromogen. <i>Tissue samples were provided by the Cooperative Human Tissue Network, which is funded by the National Cancer Institute.</i>
Reactivity:	Human
Host:	Mouse
Isotype:	IgG1
Clonality:	Monoclonal
Immunogen:	Highly pure (>98%) E.coli derived Recombinant Human IL-10 (<i>Cat.-No</i> PA084).
Specificity:	This antibody detects Human Interleukin 10. Other species not tested.
Formulation:	PBS without preservatives State: Azide Free State: Lyophilized (sterile filtered) purified IgG fraction from Cell Culture
Reconstitution Method:	Restore in sterile water to a concentration of 1.0 mg/ml.
Concentration:	1.0 mg/ml (after reconstitution)
Purification:	Affinity Chromatography on Protein A
Conjugation:	Unconjugated



[View online »](#)

Storage: Store lyophilized at 2-8°C for 6 months or at -20°C long term.
After reconstitution store the antibody undiluted at 2-8°C for one month
or (in aliquots) at -20°C long term.
Avoid repeated freezing and thawing.

Stability: Shelf life: one year from despatch.

Predicted Protein Size: ~150 kDa

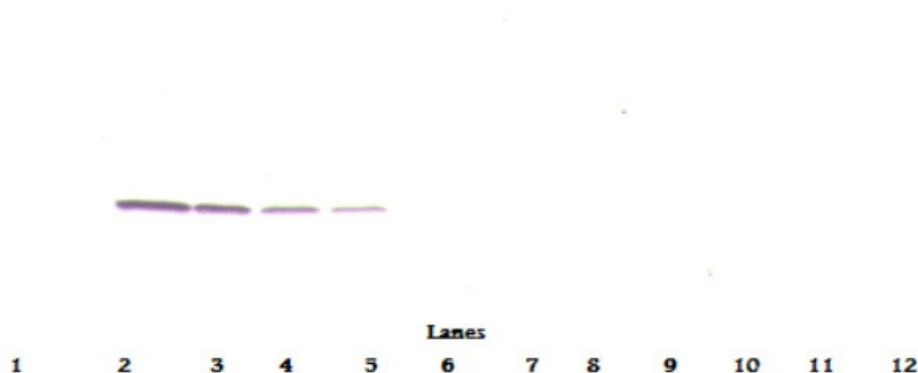
Gene Name: interleukin 10

Database Link: [Entrez Gene 3586 Human P22301](#)

Background: Interleukin 10 (IL-10) is a 178 amino acid protein that is primarily secreted by TH2 clones. IL-10 has dual functions, the first of which is the suppression of cytokine production by TH1 clones responding to antigen presented by monocyte and macrophage antigen presenting cells (APCs). The second function consists of the inhibition of response of cytokine targeted cells, possibly by the downregulation of CD25 (the interleukin-2 receptor) on macrophages and B lymphocytes. IL-10 exerts its biological activity through the IL-10 receptor (IL-10R); a 560 amino acid, 110kDa glycoprotein whose expression can be induced in cultured macrophages and fibroblasts by elevated in HIV-1 infected individuals and has been implicated in the progression of the disease.

Synonyms: IL-10, CSIF, TGIF

Product images:

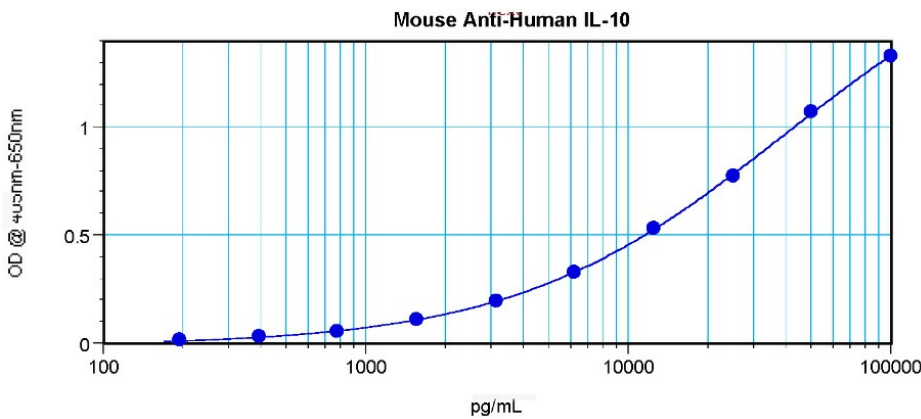


Western Blot (Unreduced) using Interleukin-10 / IL10 Antibody Cat.-No PM1121

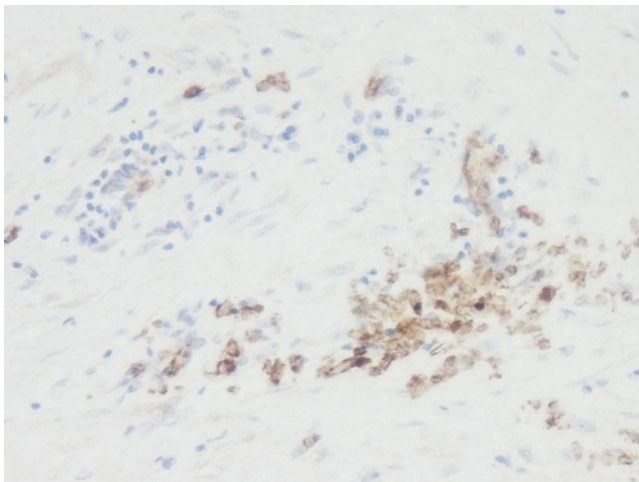


Western Blot (Reduced) using Interleukin-10 / IL10 Antibody Cat.-No PM1121

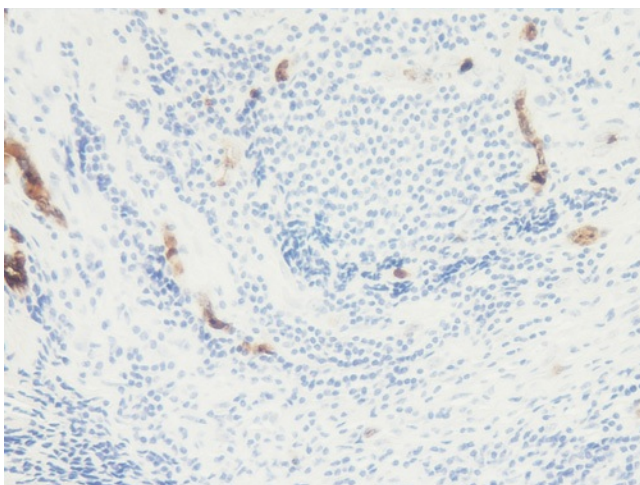
Lane
1 2 3 4 5 6 7 8 9 10 11 12



Sandwich ELISA using IL10 Antibody Cat.-No PM1121



This antibody stained formalin-fixed paraffin-embedded sections of human pancreas adenocarcinoma tissue. The recommended concentration is 5.0 ug/ml with an overnight incubation at 4°C. An HRP-labeled polymer detection system was used with a DAB chromogen. Optimal results were achieved without antigen retrieval. Tissue samples were provided by the Cooperative Human Tissue Network, which is funded by the National Cancer Institute.



This antibody stained formalin-fixed paraffin-embedded sections of human pancreas adenocarcinoma tissue. The recommended concentration is 5.0 ug/ml with an overnight incubation at 4°C. An HRP-labeled polymer detection system was used with a DAB chromogen. Tissue samples were provided by the Cooperative Human Tissue Network, which is funded by the National Cancer Institute.